

Basic Report



Title: Landscape with Farmhouse
Date: 1628
Primary Maker: Salomon van Ruysdael
Medium: Oil on panel
Dimensions: 12 15/16 × 16 3/4 × 1/2 in. (32.9 × 42.5 × 1.3 cm)



Title: Landscape with Cottage, Trees, and Stream
Date: ca. 1650
Primary Maker: Rembrandt Harmensz. van Rijn
Medium: Pen with brown ink, brown and gray wash applied by brush on paper
Dimensions: 6 5/16 × 9 1/16 in. (16 × 23 cm)



Title: Landscape with a Footbridge
Date: 1652
Primary Maker: Jacob van Ruisdael
Medium: Oil on canvas
Dimensions: 38 3/4 × 62 5/8 in. (98.4 × 159.1 cm)



Title: Landscape with Cattle Crossing a Bridge
Date: ca. 1785
Primary Maker: Thomas Gainsborough
Medium: Oil over black chalk with white chalk highlights on white laid paper
Dimensions: 8 5/8 × 12 5/16 in. (21.9 × 31.3 cm)



Title: Landscape with Haybarn and Flock of Sheep
Date: 17th century
Primary Maker: Rembrandt Harmensz. van Rijn
Medium: Etching and drypoint with sulphur tint in black ink on cream-colored laid paper
Dimensions: 3 1/4 × 6 7/8 in. (8.3 × 17.5 cm)



Title: Landscape with Three Gabled Cottages
Date: 1650
Primary Maker: Rembrandt Harmensz. van Rijn
Medium: Etching and drypoint in black ink on European cream-colored antique laid paper
Dimensions: 6 3/8 × 8 in. (16.2 × 20.3 cm)



Title: Landscape with Three Trees
Date: 1643
Primary Maker: Rembrandt Harmensz. van Rijn
Medium: Etching, drypoint and engraving in black ink on antique European laid paper
Dimensions: 8 3/8 × 11 in. (21.3 × 27.9 cm)



Title: Heroic Landscape (recto); Sketches of Cassoni, Figures, and Clouds (verso)
Date: 1655–58
Primary Maker: Claude Lorrain (Claude Gellée)
Medium: Pen, iron-gall ink, brown wash, gray wash and white heightening on laid paper
Dimensions: 11 7/8 × 15 11/16 in. (30.1 × 39.8 cm)



Title: Landscape with a Satyr
Date: 16th century
Primary Maker: Titian (Tiziano Vecellio)
Medium: Pen and brown ink on paper
Dimensions: 7 7/16 × 8 1/8 in. (18.9 × 20.6 cm)



Title: Isaac Blessing Jacob

Date: ca. 1660

Primary Maker: Rembrandt Harmensz. van Rijn

Medium: Pen with brown ink, brown and gray wash applied by brush on paper with traces of white heightening

Dimensions: 6 3/4 x 8 3/4 in. (17.2 x 22.2 cm)



Title: Farmyard with Tree and Figures

Date: ca. 1653

Primary Maker: Pieter de With

Medium: Pen with brown ink, gray wash applied by brush on paper

Dimensions: 4 7/8 x 10 1/8 in. (12.4 x 25.7 cm)



Title: Covered Jar of Inverted Baluster Shape

Date: 1662–1722

Primary Maker: Chinese, Qing Dynasty (1644–1911), Kangxi Period (1662–1722)

Medium: Hard-paste porcelain with underglaze blue

Dimensions: 11 1/2 x 4 1/8 in. (29.2 x 10.5 cm)



Title: Early Morning Plowing

Date: ca. 1875

Primary Maker: Anton Mauve

Medium: Oil on canvas

Dimensions: 16 7/8 x 22 7/8 in. (42.9 x 58.1 cm)



Title: Water Jug

Date: 1662–1722

Primary Maker: Chinese, Qing Dynasty (1644–1911), Kangxi Period (1662–1722)

Medium: Hard-paste porcelain with underglaze blue

Dimensions: 7 1/8 x 4 5/16 in. (18.1 x 10.9 cm)



Title: Octagonal Form Bowl

Date: ca. 1650

Primary Maker: Chinese, Transitional Period (1620–1683)

Medium: Hard-paste porcelain with underglaze blue

Dimensions: 4 1/4 x 7 7/8 x 7 3/4 in. (10.8 x 20 x 19.7 cm)



Title: Lamp

Date: 1736–96

Primary Maker: Chinese, Qing Dynasty (1644–1911), Qianlong Period (1736–1796)

Medium: Hard-paste porcelain with underglaze blue on brass foot

Dimensions: 18 1/8 x 7 5/8 in. (46 x 19.4 cm)



Title: Lamp

Date: 1736–96

Primary Maker: Chinese, Qing Dynasty (1644–1911), Qianlong Period (1736–1796)

Medium: Hard-paste porcelain with underglaze blue

Dimensions: 15 13/16 x 8 1/8 in. (40.1 x 20.7 cm)



Title: View from Tivoli

Date: 1651

Primary Maker: Claude Lorrain (Claude Gellée)

Medium: Black chalk, pen, and iron-gall ink, two shades of iron-gall wash on laid paper

Dimensions: 7 7/8 x 10 1/2 in. (20 x 26.7 cm)



Title: Village among Trees
Date: 1665
Primary Maker: Meindert Hobbema
Medium: Oil on oak panel
Dimensions: 30 x 43 1/2 in. (76.2 x 110.5 cm)



Title: Village with Water Mill among Trees
Date: ca. 1665
Primary Maker: Meindert Hobbema
Medium: Oil on canvas
Dimensions: 37 1/8 x 51 1/8 in. (94.3 x 129.9 cm)



Title: Crépuscule
Date: 1911
Primary Maker: Auguste Lepère
Dimensions: 8 x 11 3/8 in. (20.3 x 28.9 cm)



Title: La Route de St. Gilles
Date: late 19th century–early 20th century
Primary Maker: Auguste Lepère
Dimensions: 8 3/4 x 11 1/8 in. (22.2 x 28.3 cm)



Title: Route de la Houssaye, Crevecouer
Date: ca. 1850–1949
Primary Maker: Auguste Lepère
Dimensions: 7 x 10 1/8 in. (17.8 x 25.7 cm)



Title: Sous bois à la Rigonette
Date: late 19th century–early 20th century
Primary Maker: Auguste Lepère
Dimensions: 7 1/4 x 10 1/4 in. (18.4 x 26 cm)



Title: View of the Cannaregio Canal in Venice
Date: ca. 1770
Primary Maker: Francesco Guardi
Medium: Oil on canvas
Dimensions: 19 1/4 x 30 1/2 in. (48.9 x 77.5 cm)



Title: Study for Bank of the Pond after the Storm
Date: ca. 1870
Primary Maker: Jean-Baptiste-Camille Corot
Medium: Charcoal with stumping on cream colored paper
Dimensions: 16 1/8 x 23 7/16 in. (41 x 59.5 cm)



Title: Dieppe
Date: 1877
Primary Maker: Charles-François Daubigny
Medium: Oil on canvas
Dimensions: 26 3/8 x 39 3/4 in. (67 x 101 cm)



Title: The Washerwomen
Date: 1870–74
Primary Maker: Charles-François Daubigny
Medium: Oil on canvas
Dimensions: 20 7/8 x 31 1/2 in. (53 x 80 cm)



Title: The River
Date: 19th century
Primary Maker: Jules Dupré
Medium: Oil on canvas
Dimensions: 17 x 23 in. (43.2 x 58.4 cm)



Title: The Mall in St. James's Park
Date: ca. 1783
Primary Maker: Thomas Gainsborough
Medium: Oil on canvas
Dimensions: 47 1/2 x 57 7/8 in. (120.7 x 147 cm)



Title: The Sermon on the Mount
Date: ca. 1656
Primary Maker: Claude Lorrain (Claude Gellée)
Medium: Oil on canvas
Dimensions: 67 1/2 x 102 1/4 in. (171.5 x 259.7 cm)



Title: Vétheuil in Winter
Date: 1878–79
Primary Maker: Claude Monet
Medium: Oil on canvas
Dimensions: 27 x 35 3/8 in. (68.6 x 89.9 cm)



Title: Quay at Amsterdam
Date: ca. 1670
Primary Maker: Jacob van Ruisdael
Medium: Oil on canvas
Dimensions: 20 3/8 x 25 7/8 in. (51.8 x 65.7 cm)



Title: Antwerp: Van Goyen Looking Out for a Subject
Date: 1833
Primary Maker: Joseph Mallord William Turner
Medium: Oil on canvas
Dimensions: 36 1/8 x 48 3/8 in. (91.8 x 122.9 cm)



Title: Mortlake Terrace: Early Summer Morning
Date: 1826
Primary Maker: Joseph Mallord William Turner
Medium: Oil on canvas
Dimensions: 36 5/8 x 48 1/2 in. (93 x 123.2 cm)



Title: Harbor of Dieppe: Changement de Domicile
Date: exhibited 1825, but subsequently dated 1826
Primary Maker: Joseph Mallord William Turner
Medium: Oil on canvas
Dimensions: 68 3/8 x 88 3/4 in. (173.7 x 225.4 cm)



Title: Nocturne: Venice
Date: 1880
Primary Maker: James McNeill Whistler
Medium: Pastel on dark brown wove paper
Dimensions: 8 x 11 7/8 in. (20.3 x 30.2 cm)



Title: The Cemetery: Venice
Date: 1879
Primary Maker: James McNeill Whistler
Medium: Pastel, over traces of underdrawing in graphite on dark brown wove paper
Dimensions: 8 x 11 7/8 in. (20.3 x 30.1 cm)



Title: The Bridge
Date: 1885
Primary Maker: Jacobus Hendrikus Maris
Medium: Oil on canvas
Dimensions: 44 3/8 x 54 3/8 in. (112.7 x 138.1 cm)



Title: A View of the River Maas Before Rotterdam
Date: ca. 1645–65
Primary Maker: Jan van de Cappelle
Medium: Oil on oak panel
Dimensions: 34 3/4 x 64 x 2 1/4 in. (88.3 x 162.6 x 5.7 cm)



Title: Travelers Halting at an Inn
Date: ca. 1635–49
Primary Maker: Isack van Ostade
Medium: Oil on oak panel
Dimensions: 20 1/8 x 24 1/2 in. (51.1 x 62.2 cm)



Title: The White Horse
Date: 1819
Primary Maker: John Constable
Medium: Oil on canvas
Dimensions: 51 3/4 x 74 1/8 in. (131.4 x 188.3 cm)



Title: The Village of Becquigny
Date: ca. 1857
Primary Maker: Théodore Rousseau
Medium: Oil on mahogany panel
Dimensions: 25 x 39 3/8 in. (63.5 x 100 cm)



Title: River Scene: Men Dragging a Net
Date: ca. 1667
Primary Maker: Salomon van Ruysdael
Medium: Oil on canvas
Dimensions: 26 1/4 x 35 1/8 in. (66.7 x 89.2 cm)

Title: The Cavalry Camp
Date: 1638–68
Primary Maker: Philips Wouwerman
Medium: Oil on oak panel
Dimensions: 16 3/4 x 20 3/4 in. (42.5 x 52.7 cm)



Title: Ville-d'Avray
Date: ca. 1860
Primary Maker: Jean-Baptiste-Camille Corot
Medium: Oil on canvas
Dimensions: 17 1/4 x 29 1/4 in. (43.8 x 74.3 cm)



Title: The Pond
Date: ca. 1868-70
Primary Maker: Jean-Baptiste-Camille Corot
Medium: Oil on canvas
Dimensions: 19 1/4 x 29 in. (48.9 x 73.7 cm)



Title: A Pasture in Normandy
Date: 1850s
Primary Maker: Constant Troyon
Medium: Oil on wood panel
Dimensions: 17 x 25 5/8 in. (43.2 x 65.1 cm)



Title: The Lake
Date: 1861
Primary Maker: Jean-Baptiste-Camille Corot
Medium: Oil on canvas
Dimensions: 52 3/8 x 62 in. (133 x 157.5 cm)



Title: Salisbury Cathedral from the Bishop's Grounds
Date: 1826
Primary Maker: John Constable
Medium: Oil on canvas
Dimensions: 35 x 44 1/4 in. (88.9 x 112.4 cm)



Title: Cologne, the Arrival of a Packet-Boat: Evening
Date: 1826
Primary Maker: Joseph Mallord William Turner
Medium: Oil on canvas
Dimensions: 66 3/8 x 88 1/4 in. (168.6 x 224.2 cm)



Title: Jacob, Rachel, and Leah at the Well
Date: 1666
Primary Maker: Claude Lorrain (Claude Gellée)
Medium: Pen with iron-gall, gray wash and black chalk on white laid paper
Dimensions: 8 7/16 x 12 7/8 in. (21.4 x 32.7 cm)
Image: 7 15/16 x 12 1/8 in. (20.2 x 30.8 cm)



Title: Study for Souvenir de Mortefontaine
Date: ca. 1864
Primary Maker: Jean-Baptiste-Camille Corot
Medium: Charcoal with brown chalks and stumping on paper
Dimensions: 9 3/16 x 12 11/16 in. (23.4 x 32.2 cm)



Title: Cottage with a White Paling
Date: 1648
Primary Maker: Rembrandt Harmensz. van Rijn
Medium: Etching, printed in black ink on dark cream-colored antique European laid paper
Dimensions: 5 1/8 x 6 1/4 in. (13 x 15.9 cm)



Title: The Goldweigher's Field
Date: 1651
Primary Maker: Rembrandt Harmensz. van Rijn
Medium: Etching and drypoint, in black ink on European antique laid paper
Dimensions: 4 3/4 x 12 9/16 in. (12.1 x 31.9 cm)



Title: Etchings of Paris: The Pont-au-Change
Date: 1854 (?)
Primary Maker: Charles Meryon
Medium: Etching and drypoint in brownish-black ink on pale gray-green modern laid paper
Dimensions: 6 1/8 x 13 1/8 in. (15.6 x 33.3 cm)



Title: Etchings of Paris: The Apse of Notre-Dame de Paris
Date: 1854
Primary Maker: Charles Meryon
Medium: Etching and drypoint, printed in black ink on cream-colored modern laid paper
Dimensions: 6 1/2 x 11 3/4 in. (16.5 x 29.8 cm)



Title: The First Venice Set: Little Venice
Date: 1880
Primary Maker: James McNeill Whistler
Medium: Etching and drypoint, in brownish-black ink with light tone on heavy wove paper
Dimensions: 7 3/8 x 10 1/2 in. (18.7 x 26.7 cm)



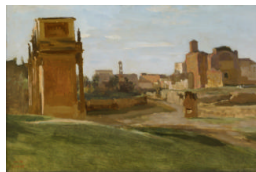
Title: The First Venice Set: Nocturne
Date: 1880
Primary Maker: James McNeill Whistler
Medium: Etching and drypoint, in brownish-black ink on dark cream-colored paper
Dimensions: 8 x 11 5/8 in. (20.3 x 29.5 cm)



Title: The First Venice Set: The Riva, No. 1
Date: 1880
Primary Maker: James McNeill Whistler
Medium: Etching with drypoint in dark brown ink on cream-colored laid paper
Dimensions: 7 15/16 x 11 5/8 in. (20.2 x 29.5 cm)



Title: Deer Hunt with Diana
Date: ca. 1620
Primary Maker: Flemish (Brussels?), Seventeenth Century
Medium: Weft-faced tapestry technique of dyed wool and silk on warps of undyed wool
Dimensions: 7 13/16 x 5 5/16 ft. (94 x 64 in.)



Title: The Arch of Constantine and the Forum, Rome
Date: 1843
Primary Maker: Jean-Baptiste-Camille Corot
Medium: Oil on paper mounted on canvas
Dimensions: 10 5/8 x 16 1/2 in. (27 x 41.9 cm)



Title: Cloud Study
Date: ca. 1822
Primary Maker: John Constable
Medium: Oil on paper, laid down on board
Dimensions: 11 1/2 x 19 in. (29.2 x 48.3 cm)



Title: Cloud Study
Date: ca. 1822
Primary Maker: John Constable
Medium: Oil on paper, laid down on board
Dimensions: 11 1/2 x 19 in. (29.2 x 48.3 cm)



Title: Sermon on the Mount
Date: 1776
Primary Maker: Richard Earlom
Medium: Mezzotint
Dimensions: 11 5/16 x 17 1/16 in. (28.7 x 43.3 cm)



Title: The White Horse
Date: 1838
Primary Maker: David Lucas
Dimensions: 15 1/2 x 13 3/4 in. (39.4 x 34.9 cm)

Title: Le Pont du Carrousel
Primary Maker: Johannes Pieter de Frey
Medium: Print
Dimensions: 10 5/8 x 14 5/8 in. (27 x 37.1 cm)



Title: Bottle-Shaped Vase
Date: 1662–1722
Primary Maker: Chinese, Qing Dynasty (1644–1911), Kangxi Period (1662–1722)
Medium: Hard-paste porcelain with underglaze blue
Dimensions: 7 1/2 x 3 3/4 in. (19.1 x 9.5 cm)



Title: Bottle-Shaped Vase
Date: 1662–1722
Primary Maker: Chinese, Qing Dynasty (1644–1911), Kangxi Period (1662–1722)
Medium: Hard-paste porcelain with underglaze blue
Dimensions: 5 1/2 x 3 in. (14 x 7.6 cm)



Title: Bottle-Shaped Vase with Globular Body
Date: 1662–1722
Primary Maker: Chinese, Qing Dynasty (1644–1911), Kangxi Period (1662–1722)
Medium: Hard-paste porcelain with underglaze blue
Dimensions: 9 1/2 x 5 3/8 in. (24.1 x 13.7 cm)



Title: The Boatman of Mortefontaine
Date: ca. 1865–70
Primary Maker: Jean-Baptiste-Camille Corot
Medium: Oil on canvas
Dimensions: 24 x 35 3/8 in. (61 x 89.9 cm)



Title: Dish with Foliate Rim
Date: 1662–1722
Primary Maker: Chinese, Qing Dynasty (1644–1911), Kangxi Period (1662–1722)
Medium: Hard-paste porcelain with underglaze blue
Dimensions: 2 1/8 x 10 3/8 in. (5.4 x 26.4 cm)



Title: The Bridge

Date: Late 19th century

Primary Maker: Jacobus Hendrikus Maris

Medium: Etching, printed in black ink on cream-colored wove paper

Dimensions: Image: 3 3/8 x 7 7/8 in. (8.6 x 20 cm)
Sheet: 9 3/4 x 13 1/2 in. (24.8 x 34.3 cm)



Title: Pot-pourri à Vaisseau

Date: 1760

Primary Maker: Sèvres Porcelain Manufactory

Medium: Soft-paste porcelain, with later gilt-bronze mount

Dimensions: 17 1/2 x 14 7/8 x 7 1/2 in. (44.5 x 37.8 x 19.1 cm)



Title: Vase à Oreilles (one of a pair)

Date: 1760

Primary Maker: Sèvres Porcelain Manufactory

Medium: Soft-paste porcelain, with later addition of gilt-bronze base

Dimensions: H.: 12 1/2 in. (31.8 cm), diam.: 6 5/8 in. (16.8 cm)



Title: Vase à Oreilles (one of a pair)

Date: 1760

Primary Maker: Sèvres Porcelain Manufactory

Medium: Soft-paste porcelain, with later addition of gilt-bronze base

Dimensions: H.: 12 1/2 in. (31.8 cm), diam.: 6 5/8 in. (16.8 cm)



Title: Pond at the Edge of the Woods (Etang en lisière de bois)

Date: 1853

Primary Maker: Théodore Rousseau

Medium: Pencil on paper

Dimensions: 7 1/2 x 12 13/16 in. (19.1 x 32.5 cm)



Title: Otterhounds

Date: 1838–44

Primary Maker: Edwin Landseer

Medium: Watercolor and gouache on wove paper with graphite framing lines

Dimensions: 11 1/2 x 17 7/8 in. (29.2 x 45.5 cm)



Title: Cows and Herdsman by a River

Date: after 1650

Primary Maker: Aelbert Cuyp

Medium: Oil on oak panel

Dimensions: 19 3/4 x 29 1/4 in. (50.2 x 74.3 cm)



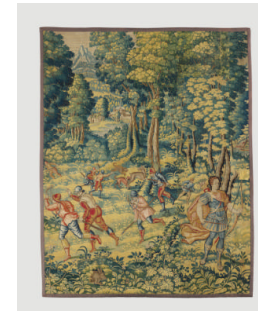
Title: Bear Hunt

Date: ca. 1580–1620

Primary Maker: Flemish (Brussels?)

Medium: Weft-faced tapestry technique with dyed wool and silk on warps of undyed wool

Dimensions: 7 3/4 x 6 3/16 ft. (92 3/4 x 74 in.)



Title: Deer Hunt with Archer

Date: ca. 1580–1620

Primary Maker: Flemish (Brussels?)

Medium: Weft-tapestry technique with dyed wool and silk on warps of undyed wool

Dimensions: 7 7/8 x 6 3/16 ft. (94 3/4 x 74 3/8 in.)



Title: View of Dieppe Harbor

Date: 1873

Primary Maker: Antoine Vollon

Medium: Watercolor and graphite on laid paper

Dimensions: 11 x 18 1/8 in. (27.9 x 46 cm)



Title: Winter in Norway

Date: ca. 1895

Primary Maker: Frits Thaulow

Medium: Oil on canvas

Dimensions: 21 1/2 x 25 3/4 in. (54.6 x 65.4 cm)



Title: Dish with Foliate Rim

Date: 18th century

Primary Maker: Chinese, Qing Dynasty (1644-1911)

Medium: Hard-paste porcelain with underglaze blue

Dimensions: 1 7/8 x 11 in. (4.8 x 27.9 cm)



Title: Fan-Shaped Jardinière and Stand with Children, Turquoise Blue Ground

Date: 1755

Primary Maker: Sèvres Porcelain Manufactory

Medium: Soft-paste porcelain

Dimensions: 7 3/8 x 7 11/16 x 5 11/16 in. (18.7 x 19.5 x 14.4 cm)