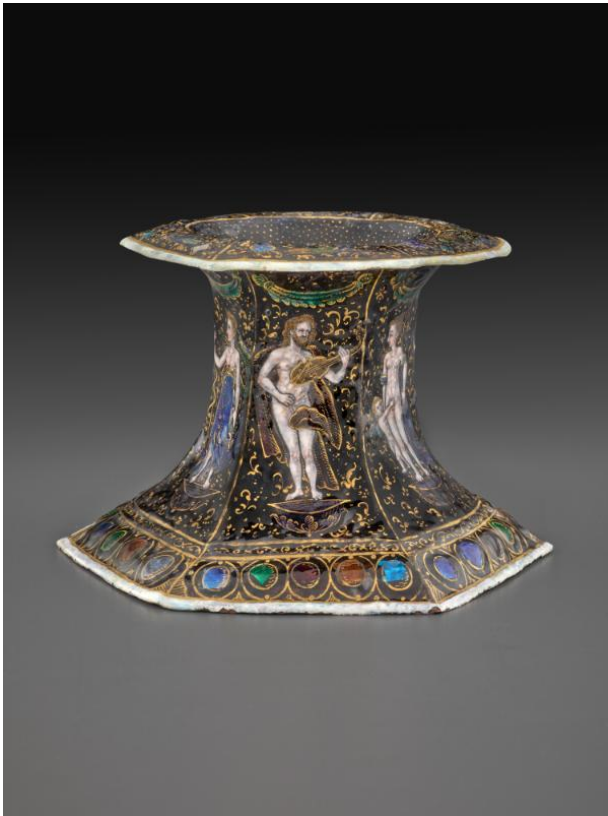


The Frick Collection: Detail Report



Saltcellar: Olympian Deities

Jean II Limousin (French, early 17th century)

Date early 17th century

Medium Enamel on copper

Dimensions H: 3 3/4 in. (9.5 cm)

Credit Line Henry Clay Frick Bequest

Accession Number 1916.4.23

Not On View

Commentary Six gods and goddesses—Apollo, Venus, Diana, Eros, Mars, and Jupiter—ornament the sides of this hexagonal salt. It likely had a companion saltcellar (now lost) that was enameled with other gods or allegorical figures, such as the Liberal Arts. Jean Limousin II continued the decorative ideas of his father, Jean I, well into the seventeenth century. Source: Wardropper, Ian and Julia Day. *Limoges Enamels at The Frick Collection*. New York: The Frick Collection/D Giles Limited, 2015.

Collection History J. Pierpont Morgan, London and New York. Duveen. Frick, 1916. Source: *Enamels, Rugs and Silver in The Frick Collection*. Volume VIII. New York: The Frick Collection, 1977.