

Basic Report



Title: Dish: Judgment of Paris

Date: ca. 1565–75

Primary Maker: Orazio Fontana

Medium: Tin-glazed earthenware

Dimensions: H.: 2 1/8 in. (5.4 cm), diam.: 16 3/4 in. (42.5 cm)



Title: Ewer

Date: mid-16th century

Primary Maker: Saint-Porchaire Ware

Medium: Lead-Glazed earthenware

Dimensions: 10 1/4 × 5 1/16 × 5 1/16 in. (26 × 12.9 × 12.9 cm)



Title: Very Tall Covered Jar with Famille Rose Decoration

Date: probably 19th century

Primary Maker: Chinese, Qing Dynasty (1644–1911)

Medium: Hard-paste porcelain with polychrome overglaze

Dimensions: 51 × 20 in. (129.5 × 50.8 cm)



Title: Pair of Mounted Covered Vases

Date: ca. 1770

Primary Maker: Chinese, Qing Dynasty (1644–1911), Qianlong Period (1736–1796)

Medium: Hard-paste porcelain and gilt bronze

Dimensions: 18 1/4 × 10 1/2 × 7 3/8 in. (46.4 × 26.7 × 18.7 cm)



Title: Pair of Mounted Covered Vases

Date: ca. 1770

Primary Maker: Chinese, Qing Dynasty (1644–1911), Qianlong Period (1736–1796)

Medium: Hard-paste porcelain and gilt bronze

Dimensions: 18 1/4 × 10 1/2 × 7 3/8 in. (46.4 × 26.7 × 18.7 cm)



Title: Two Figures of Ladies on Stands

Date: 1662–1722

Primary Maker: Chinese, Qing Dynasty (1644–1911), Kangxi Period (1662–1722)

Medium: Hard-paste porcelain with polychrome overglaze

Dimensions: 38 × 10 1/4 × 10 1/4 in. (96.5 × 26 × 26 cm)



Title: Two Figures of Ladies on Stands
Date: 1662–1722
Primary Maker: Chinese, Qing Dynasty (1644–1911), Kangxi Period (1662–1722)
Medium: Hard-paste porcelain with polychrome overglaze
Dimensions: 38 × 10 1/4 × 10 1/4 in. (96.5 × 26 × 26 cm)



Title: Jar (One of a Five Piece Set with Famille Verte Decoration)
Date: probably 18th century
Primary Maker: Chinese, Qing Dynasty (1644–1911)
Medium: Famille verte porcelain
Dimensions: H.: 8 5/8 in. (21.9 cm)



Title: Jar (One of Five Piece Set with Famille Verte Decoration)
Date: probably 18th century
Primary Maker: Chinese, Qing Dynasty (1644–1911)
Medium: Famille verte porcelain
Dimensions: H.: 10 1/8 in. (25.7 cm)



Title: Jar (One of a Five Piece Set with Famille Verte Decoration)
Date: probably 18th century
Primary Maker: Chinese, Qing Dynasty (1644–1911)
Medium: Famille verte porcelain
Dimensions: H.: 10 1/8 in. (25.7 cm)



Title: Jar (One of a Five Piece Set with Famille Verte Decoration)
Date: probably 18th century
Primary Maker: Chinese, Qing Dynasty (1644–1911)
Medium: Famille verte porcelain
Dimensions: H.: 10 1/8 in. (25.7 cm)



Title: Pair of Vases
Date: 18th century
Primary Maker: Chinese, Qing Dynasty (1644–1911)
Medium: Famille noire porcelain
Dimensions: 18 1/4 × 9 in. (46.4 × 22.9 cm)



Title: Pair of Vases
Date: 18th century
Primary Maker: Chinese, Qing Dynasty (1644–1911)
Medium: Famille noire porcelain
Dimensions: 18 × 9 in. (45.7 × 22.9 cm)



Title: Pair of Square Vases with Covers
Date: probably 19th century
Primary Maker: Chinese, Qing Dynasty (1644–1911)
Medium: Famille noire porcelain
Dimensions: H.: 19 1/4 in. (48.9 cm)



Title: Pair of Square Vases with Covers
Date: probably 19th century
Primary Maker: Chinese, Qing Dynasty (1644–1911)
Medium: Famille noire porcelain
Dimensions: H.: 19 1/4 in. (48.9 cm)



Title: Very Tall Covered Jar with Famille Rose Decoration

Date: probably 19th century

Primary Maker: Chinese, Qing Dynasty (1644–1911)

Medium: Hard-paste porcelain with polychrome overglaze

Dimensions: 51 x 20 in. (129.5 x 50.8 cm)



Title: Covered Jar with Black Ground

Date: 19th century

Primary Maker: Chinese, Qing Dynasty (1644–1911)

Medium: Famille noire porcelain

Dimensions: 16 x 10 in. (40.6 x 25.4 cm)



Title: Bowl with Flaring Rim and Black Ground

Date: probably 18th century

Primary Maker: Chinese, Qing Dynasty (1644–1911)

Medium: Famille noire porcelain

Dimensions: 3 5/8 x 7 7/8 in. (9.2 x 20 cm)



Title: Two Large Covered Jars

Date: 18th century

Primary Maker: Chinese, Qing Dynasty (1644–1911)

Medium: Hard-paste porcelain with polychrome overglaze

Dimensions: H.: 25 in. (63.5 cm), diam.: 14 in. (35.6 cm)



Title: Covered Jar with Famille Rose Decoration

Date: 18th century

Primary Maker: Chinese, Qing Dynasty (1644–1911)

Medium: Hard-paste porcelain with polychrome overglaze

Dimensions: 17 3/4 x 10 in. (45.1 x 25.4 cm)



Title: Covered Jar with Famille Rose Decoration

Date: 18th century

Primary Maker: Chinese, Qing Dynasty (1644–1911)

Medium: Hard-paste porcelain with polychrome overglaze

Dimensions: 17 3/4 x 10 in. (45.1 x 25.4 cm)



Title: Two Large Covered Jars

Date: 18th century

Primary Maker: Chinese, Qing Dynasty (1644–1911)

Medium: Hard-paste porcelain with polychrome overglaze

Dimensions: H.: 25 in. (63.5 cm), diam.: 14 in. (35.6 cm)



Title: Covered Jar with Famille Rose Decoration

Date: 18th century

Primary Maker: Chinese, Qing Dynasty (1644–1911)

Medium: Hard-paste porcelain with polychrome overglaze

Dimensions: 17 3/4 x 10 in. (45.1 x 25.4 cm)



Title: Covered Jar with Famille Rose Decoration

Date: 18th century

Primary Maker: Chinese, Qing Dynasty (1644–1911)

Medium: Hard-paste porcelain with polychrome overglaze

Dimensions: 17 3/4 x 10 in. (45.1 x 25.4 cm)



Title: Covered Jar with Famille Rose Decoration

Date: 18th century

Primary Maker: Chinese, Qing Dynasty (1644–1911)

Medium: Hard-paste porcelain with polychrome overglaze

Dimensions: 17 3/4 x 10 in. (45.1 x 25.4 cm)



Title: Covered Jar with Famille Rose Decoration

Date: 18th century

Primary Maker: Chinese, Qing Dynasty (1644–1911)

Medium: Hard-paste porcelain with polychrome overglaze

Dimensions: 17 3/4 x 10 in. (45.1 x 25.4 cm)



Title: Covered Jar with Famille Rose Decoration

Date: 18th century

Primary Maker: Chinese, Qing Dynasty (1644–1911)

Medium: Hard-paste porcelain with polychrome overglaze

Dimensions: 17 3/4 x 10 in. (45.1 x 25.4 cm)



Title: Covered Jar with Famille Rose Decoration

Date: 18th century

Primary Maker: Chinese, Qing Dynasty (1644–1911)

Medium: Hard-paste porcelain with polychrome overglaze

Dimensions: 17 3/4 x 10 in. (45.1 x 25.4 cm)



Title: Two Covered Jars with Famille Rose Decoration

Date: 18th century

Primary Maker: Chinese, Qing Dynasty (1644–1911)

Medium: Hard-paste porcelain with polychrome overglaze

Dimensions: 33 x 18 3/4 in. (83.8 x 47.6 cm)



Title: Pair of Mounted Vases

Date: ca. 1755–60

Primary Maker: Chinese, Qing Dynasty (1644–1911), First Half of the Eighteenth Century

Medium: Hard-paste porcelain and gilt bronze

Dimensions: 18 1/8 x 14 1/4 x 8 1/2 in. (46 x 36.2 x 21.6 cm)



Title: Pair of Mounted Vases

Date: ca. 1755–60

Primary Maker: Chinese, Qing Dynasty (1644–1911), First Half of the Eighteenth Century

Medium: Hard-paste porcelain and gilt bronze

Dimensions: 18 1/8 x 14 1/4 x 8 1/2 in. (46 x 36.2 x 21.6 cm)



Title: Bowl with Flaring Rim and Black Ground

Date: probably 18th century

Primary Maker: Chinese, Qing Dynasty (1644–1911)

Medium: Famille noire porcelain

Dimensions: 3 1/2 x 7 1/2 in. (8.9 x 19.1 cm)



Title: Pair of Mounted Covered Jars

Date: 1745–49

Primary Maker: Chinese, Qing Dynasty (1644–1911)

Medium: Hard-paste porcelain and gilt bronze

Dimensions: 18 7/16 x 18 5/8 x 10 5/8 in. (46.8 x 47.3 x 27 cm)



Title: Cylindrical Vase
Date: probably 19th century
Primary Maker: Chinese, Qing Dynasty (1644–1911)
Medium: Famille noire porcelain
Dimensions: 22 x 8 in. (55.9 x 20.3 cm)



Title: Two Covered Jars with Famille Rose Decoration
Date: 18th century
Primary Maker: Chinese, Qing Dynasty (1644–1911)
Medium: Hard-paste porcelain with polychrome overglaze
Dimensions: 33 x 18 3/4 in. (83.8 x 47.6 cm)



Title: Quadrilateral Vase
Date: probably 19th century
Primary Maker: Chinese, Qing Dynasty (1644–1911)
Medium: Famille noire porcelain on wood base with brass fittings
Dimensions: H.: 22 in. (55.9 cm)



Title: Quadrilateral Vase
Date: probably 19th century
Primary Maker: Chinese, Qing Dynasty (1644–1911)
Medium: Famille noire porcelain on carved wooden base with brass fittings
Dimensions: H.: 20 3/4 in. (52.7 cm)



Title: Tall Vase with Black Ground
Date: probably 19th century
Primary Maker: Chinese, Qing Dynasty (1644–1911)
Medium: Famille noire porcelain
Dimensions: 24 1/4 x 9 5/8 in. (61.6 x 24.4 cm)



Title: Two Square Vases
Date: probably 19th century
Primary Maker: Chinese, Qing Dynasty (1644–1911)
Medium: Famille noire porcelain
Dimensions: H.: 19 1/4 in. (48.9 cm)



Title: Two Square Vases
Date: probably 19th century
Primary Maker: Chinese, Qing Dynasty (1644–1911)
Medium: Famille noire porcelain
Dimensions: H.: 19 1/4 in. (48.9 cm)



Title: Tall Vase with Green Ground
Date: probably 19th century
Primary Maker: Chinese, Qing Dynasty (1644–1911)
Medium: Famille verte porcelain
Dimensions: 27 x 10 in. (68.6 x 25.4 cm)



Title: Pair of Mounted Covered Jars
Date: 1745–49
Primary Maker: Chinese, Qing Dynasty (1644–1911)
Medium: Hard-paste porcelain and gilt bronze
Dimensions: 17 7/8 x 18 5/8 x 10 11/16 in. (45.4 x 47.3 x 27.1 cm)



Title: Tall Vase with Black Ground
Date: probably 19th century
Primary Maker: Chinese, Qing Dynasty (1644–1911)
Medium: Famille noire porcelain
Dimensions: 27 1/4 x 10 1/2 in. (69.2 x 26.7 cm)



Title: Vase
Date: probably 19th century
Primary Maker: Chinese, Qing Dynasty (1644–1911)
Medium: Famille noire porcelain
Dimensions: 27 x 10 1/2 in. (68.6 x 26.7 cm)



Title: Vase
Date: probably 19th century
Primary Maker: Chinese, Qing Dynasty (1644–1911)
Medium: Hard-paste porcelain with polychrome overglaze
Dimensions: H.: 27 in. (68.6 cm), diam.: 11 in. (27.9 cm)



Title: Tall Vase with Black Ground
Date: probably 19th century
Primary Maker: Chinese, Qing Dynasty (1644–1911)
Medium: Famille noire porcelain
Dimensions: 17 1/2 x 8 1/8 in. (44.5 x 20.6 cm)



Title: Tall Vase with Black Ground
Date: probably 19th century
Primary Maker: Chinese, Qing Dynasty (1644–1911)
Medium: Famille noire porcelain on wood base with brass fittings
Dimensions: 22 1/4 x 10 in. (56.5 x 25.4 cm)



Title: Tall Vase with Black Ground
Date: probably 19th century
Primary Maker: Chinese, Qing Dynasty (1644–1911)
Medium: Famille noire porcelain
Dimensions: 16 3/4 x 7 1/8 in. (42.5 x 18.1 cm)



Title: Vase
Date: probably 19th century
Primary Maker: Chinese, Qing Dynasty (1644–1911)
Medium: Famille noire porcelain
Dimensions: 27 1/4 x 10 3/4 in. (69.2 x 27.3 cm)



Title: Pair of Vases
Date: probably 19th century
Primary Maker: Chinese, Qing Dynasty (1644–1911)
Medium: Famille noire porcelain
Dimensions: 26 1/4 x 10 3/4 in. (66.7 x 27.3 cm)



Title: Pair of Lions
Date: 18th century
Primary Maker: Chinese, Qing Dynasty (1644–1911)
Medium: Famille verte porcelain
Dimensions: H.: 19 in. (48.3 cm)



Title: Pair of Lions

Date: 18th century

Primary Maker: Chinese,
Qing Dynasty (1644–1911)

Medium: Famille verte
porcelain

Dimensions: H.: 19 in.
(48.3 cm)



**Title: Jar (One of a Five
Piece Set with Famille
Verte Decoration)**

Date: 1644–1911

Primary Maker: Chinese,
Qing Dynasty (1644–1911)

Medium: Famille verte
porcelain

Dimensions: H.: 8 5/8 in.
(21.9 cm)



**Title: Jar (One of a Five
Piece Set with Famille
Verte Decoration)**

Date: 1644–1911

Primary Maker: Chinese,
Qing Dynasty (1644–1911)

Medium: Famille verte
porcelain

Dimensions: H.: 8 5/8 in.
(21.9 cm)



**Title: Jar (One of a Five
Piece Set with Famille
Verte Decoration)**

Date: 1644–1911

Primary Maker: Chinese,
Qing Dynasty (1644–1911)

Medium: Famille verte
porcelain

Dimensions: H.: 10 1/8 in.
(25.7 cm)



**Title: Jar (One of a Five
Piece Set with Famille
Verte Decoration)**

Date: 1644–1911

Primary Maker: Chinese,
Qing Dynasty (1644–1911)

Medium: Famille verte
porcelain

Dimensions: H.: 10 1/8 in.
(25.7 cm)



**Title: Jar (One of a Five
Piece Set with Famille
Verte Decoration)**

Date: 1644–1911

Primary Maker: Chinese,
Qing Dynasty (1644–1911)

Medium: Famille verte
porcelain

Dimensions: H.: 10 1/8 in.
(25.7 cm)



Title: Pair of Vases

Date: probably 19th
century

Primary Maker: Chinese,
Qing Dynasty (1644–1911)

Medium: Famille noire
porcelain

Dimensions: 27 x 10 1/2 in.
(68.6 x 26.7 cm)



**Title: Square Vase with
Black Ground**

Date: probably 19th
century

Primary Maker: Chinese,
Qing Dynasty (1644–1911)

Medium: Famille noire
porcelain

Dimensions: H.: 18 1/2 in.
(47 cm)



**Title: Jar (One of a Five
Piece Set with Famille
Verte Decoration)**

Date: probably 18th
century

Primary Maker: Chinese,
Qing Dynasty (1644–1911)

Medium: Famille verte
porcelain

Dimensions: H.: 8 5/8 in.
(21.9 cm)



Title: Square Tray with Polychrome Decoration and Openwork Rim

Date: 19th century

Primary Maker: Samson Manufactory

Medium: Hard-paste porcelain

Dimensions: 1 1/4 x 6 x 6 1/16 in. (3.2 x 15.2 x 15.4 cm)



Title: Vase Duplessis à Enfants (one of a pair)

Date: 1753-54

Primary Maker: Vincennes Porcelain Manufactory

Medium: Soft-paste porcelain, with later addition of gilt-bronze mount

Dimensions: 8 5/8 x 5 3/4 x 5 3/4 in. (21.9 x 14.6 x 14.6 cm)



Title: Vase Duplessis à Enfants (one of a pair)

Date: 1753-54

Primary Maker: Vincennes Porcelain Manufactory

Medium: Soft-paste porcelain, with later addition of gilt-bronze mount

Dimensions: 8 5/8 x 5 7/8 x 5 7/8 in. (21.9 x 14.9 x 14.9 cm)



Title: Ewer

Date: mid-16th century

Primary Maker: Saint-Porchaire Ware

Medium: Glazed earthenware

Dimensions: 9 x 4 1/2 x 3 1/4 in. (22.9 x 11.4 x 8.3 cm)



Title: Vase Duplessis (one of a pair)

Date: 1755

Primary Maker: Vincennes Porcelain Manufactory

Medium: Soft-paste porcelain

Dimensions: 7 3/8 x 4 1/4 x 3 3/4 in. (18.7 x 10.8 x 9.5 cm)



Title: Vase Duplessis (one of a pair)

Date: 1755

Primary Maker: Vincennes Porcelain Manufactory

Medium: Soft-paste porcelain

Dimensions: 7 5/8 x 4 1/4 x 3 5/8 in. (19.4 x 10.8 x 9.2 cm)



Title: Square Tray with Polychrome Decoration and Openwork Rim

Date: 19th century

Primary Maker: Samson Manufactory

Medium: Hard-paste porcelain

Dimensions: 1 1/4 x 6 in. (3.2 x 15.2 cm)



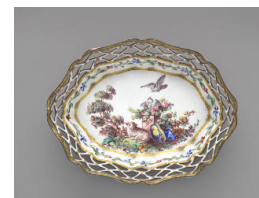
Title: Small Green Tray

Date: 19th century

Primary Maker: Samson Manufactory

Medium: Hard-paste porcelain

Dimensions: 1 x 4 5/16 x 8 1/2 in. (2.6 x 11 x 21.6 cm)



Title: Small Pink Tray

Date: 19th century

Primary Maker: Samson Manufactory

Medium: Hard-paste porcelain

Dimensions: 7/8 x 4 5/16 x 3 1/4 in. (2.2 x 11 x 8.3 cm)



Title: Teapot with Gilt-Metal Mounts
Date: Late 17th century
Primary Maker: Chinese, Qing Dynasty (1644–1911), Kangxi Period (1662–1722)
Medium: Hard-paste porcelain with gilt-metal mounts
Dimensions: H: 4 in. (10 cm)



Title: Two Large Dishes
Date: 1662–1722
Primary Maker: Chinese, Qing Dynasty (1644–1911), Kangxi Period (1662–1722)
Medium: Hard-paste porcelain
Dimensions: Diam.: 16 7/8 in. (42.7 cm)



Title: Teapot
Date: ca. 1700
Primary Maker: Chinese, Qing Dynasty (1644–1911), Kangxi Period (1662–1722)
Medium: Hard-paste porcelain, Dehua ware



Title: Dish
Date: 1662–1722
Primary Maker: Chinese, Qing Dynasty (1644–1911), Kangxi Period (1662–1722)
Medium: Hard-paste porcelain
Dimensions: Diam.: 12 1/4 in. (31.2 cm)

Title: Plate
Date: 1662–1722
Primary Maker: Chinese, Qing Dynasty (1644–1911), Kangxi Period (1662–1722)
Medium: Hard-paste porcelain
Dimensions: Diam.: 14 3/4 in. (37.5 cm)



Title: Two Dishes
Date: 1662–1722
Primary Maker: Chinese, Qing Dynasty (1644–1911), Kangxi Period (1662–1722)
Medium: Hard-paste porcelain
Dimensions: Diam.: 14 in. (35.5 cm) (each)



Title: Lamp
Date: 1736–96
Primary Maker: Chinese, Qing Dynasty (1644–1911), Qianlong Period (1736–1796)
Medium: Hard-paste porcelain with underglaze blue
Dimensions: 15 13/16 x 8 1/8 in. (40.1 x 20.7 cm)



Title: Lamp
Date: 1736–96
Primary Maker: Chinese, Qing Dynasty (1644–1911), Qianlong Period (1736–1796)
Medium: Hard-paste porcelain with underglaze blue on brass foot
Dimensions: 18 1/8 x 7 5/8 in. (46 x 19.4 cm)



Title: Bottle-Shaped Vase (One of a Pair)
Date: 1662–1722
Primary Maker: Chinese, Qing Dynasty (1644–1911), Kangxi Period (1662–1722)
Medium: Hard-paste porcelain with underglaze blue
Dimensions: 5 x 3 3/16 in. (12.7 x 8.1 cm)



**Title: Deep Stem Cup
(One of a Pair)**

Date: 17th century

Primary Maker: Chinese,
Transitional Period
(1620–1683)

Medium: Hard-paste
porcelain with underglaze
blue

Dimensions: 5 3/4 x 2 7/8
in. (14.6 x 7.3 cm)



**Title: Bottle-Shaped
Vase, Lobed (One of a
Pair)**

Date: 17th century

Primary Maker: Chinese,
Transitional Period
(1620–1683)

Medium: Hard-paste
porcelain with underglaze
blue

Dimensions: 10 1/8 x 4 3/4
in. (25.7 x 12 cm)



**Title: Teapot (One of a
Pair)**

Date: 17th century

Primary Maker: Chinese,
Transitional Period
(1620–1683)

Medium: Hard-paste
porcelain with underglaze
blue

Dimensions: 3 1/16 x 2 11
/16 in. (7.7 x 6.9 cm)



**Title: Deep Plate (One
of a Pair)**

Date: 1662–1722

Primary Maker: Chinese,
Qing Dynasty
(1644–1911), Kangxi
Period (1662–1722)

Medium: Hard-paste
porcelain with underglaze
blue

Dimensions: Diam.: 8 3/8
in. (21.3 cm)



**Title: Deep Stem Cup
(One of a Pair)**

Date: 17th century

Primary Maker: Chinese,
Transitional Period
(1620–1683)

Medium: Hard-paste
porcelain with underglaze
blue

Dimensions: 5 13/16 x 2 7
/8 in. (14.8 x 7.3 cm)



**Title: Bottle-Shaped
Vase with Onion Mouth
(One of a Pair)**

Date: 1736–96

Primary Maker: Chinese,
Qing Dynasty
(1644–1911), Qianlong
Period (1736–1796)

Medium: Hard-paste
porcelain with underglaze
blue

Dimensions: 11 1/2 x 5 1/2
in. (29.2 x 14 cm)



Title: Bronze-Form Vase

Date: 1662–1722

Primary Maker: Chinese,
Qing Dynasty
(1644–1911), Kangxi
Period (1662–1722)

Medium: Hard-paste
porcelain with underglaze
blue

Dimensions: 9 1/2 x 4 7/8
in. (24.1 x 12.4 cm)



Title: Taper Holder

Date: 1662–1722

Primary Maker: Chinese,
Qing Dynasty
(1644–1911), Kangxi
Period (1662–1722)

Medium: Hard-paste
porcelain with underglaze
blue

Dimensions: 5 11/16 x 3 1
/8 in. (14.5 x 8 cm)



**Title: Bottle-Shaped
Vase with Onion Mouth
(One of a Pair)**

Date: 1736–96

Primary Maker: Chinese,
Qing Dynasty
(1644–1911), Qianlong
Period (1736–1796)

Medium: Hard-paste
porcelain with underglaze
blue

Dimensions: 11 1/2 x 5 1/2
in. (29.2 x 14 cm)



Title: Beaker Vase

Date: 1662–1722

Primary Maker: Chinese, Qing Dynasty (1644–1911), Kangxi Period (1662–1722)

Medium: Hard-paste porcelain with underglaze blue

Dimensions: 9 9/16 x 4 1/2 in. (24.3 x 11.4 cm)



Title: Beaker Vase (One of a Pair)

Date: 1662–1722

Primary Maker: Chinese, Qing Dynasty (1644–1911), Kangxi Period (1662–1722)

Medium: Hard-paste porcelain with underglaze blue

Dimensions: 10 3/16 x 4 13/16 in. (25.9 x 12.2 cm)



Title: Figure of a Tiger

Date: 1662–1722

Primary Maker: Chinese, Qing Dynasty (1644–1911), Kangxi Period (1662–1722)

Medium: Hard-paste porcelain with underglaze blue

Dimensions: 3 9/16 x 1 5/16 x 2 3/8 in. (9.1 x 3.4 x 6.1 cm)



Title: Octagonal Form Bowl

Date: ca. 1650

Primary Maker: Chinese, Transitional Period (1620–1683)

Medium: Hard-paste porcelain with underglaze blue

Dimensions: 4 1/4 x 7 7/8 x 7 3/4 in. (10.8 x 20 x 19.7 cm)



Title: Slim Beaker Vase

Date: 1662–1722

Primary Maker: Chinese, Qing Dynasty (1644–1911), Kangxi Period (1662–1722)

Medium: Hard-paste porcelain with underglaze blue

Dimensions: 7 11/16 x 2 5/16 in. (19.5 x 5.8 cm)



Title: Bottle-Shaped Vase with High Flaring Foot

Date: 1662–1722

Primary Maker: Chinese, Qing Dynasty (1644–1911), Kangxi Period (1662–1722)

Medium: Hard-paste porcelain with underglaze blue

Dimensions: 9 3/4 x 4 1/2 in. (24.8 x 11.4 cm)



Title: Bowl

Date: 1662–1722

Primary Maker: Chinese, Qing Dynasty (1644–1911), Kangxi Period (1662–1722)

Medium: Hard-paste porcelain with underglaze blue

Dimensions: 4 1/2 x 9 1/8 in. (11.4 x 23.1 cm)



Title: Bottle-Shaped Vase (One of a Pair)

Date: 1662–1722

Primary Maker: Chinese, Qing Dynasty (1644–1911), Kangxi Period (1662–1722)

Medium: Hard-paste porcelain with underglaze blue

Dimensions: 5 x 3 3/16 in. (12.7 x 8.1 cm)



Title: Beaker and Cover (One of a Pair)

Date: 17th century

Primary Maker: Chinese, Transitional Period (1620–1683)

Medium: Hard-paste porcelain with underglaze blue

Dimensions: 5 15/16 x 3 5/16 in. (15.1 x 8.4 cm)



Title: Bottle-Shaped Vase

Date: 1662–1722

Primary Maker: Chinese, Qing Dynasty (1644–1911), Kangxi Period (1662–1722)

Medium: Hard-paste porcelain with underglaze blue

Dimensions: 8 3/8 x 4 1/4 in. (21.3 x 10.8 cm)



Title: Oblong Jardinière

Date: 1662–1722

Primary Maker: Chinese, Qing Dynasty (1644–1911), Kangxi Period (1662–1722)

Medium: Hard-paste porcelain with underglaze blue

Dimensions: 2 13/16 x 3 3/4 x 2 3/8 in. (7.2 x 9.5 x 6 cm)



Title: Beaker on a Foot Ring (One of a Pair)

Date: 17th century

Primary Maker: Chinese, Transitional Period (1620–1683)

Medium: Hard-paste porcelain with underglaze blue

Dimensions: 5 7/8 x 2 15/16 in. (14.9 x 7.5 cm)



Title: Jar (One of a Pair)

Date: 1723–35

Medium: Hard-paste porcelain with underglaze blue

Dimensions: 2 1/8 x 1/4 in. (5.4 x 0.6 cm)



Title: Box

Date: 1662–1722

Primary Maker: Chinese, Qing Dynasty (1644–1911), Kangxi Period (1662–1722)

Medium: Hard-paste porcelain with underglaze blue

Dimensions: 4 3/16 x 9 1/8 in. (10.7 x 23.1 cm)



Title: Covered Jar (One of a Pair)

Date: 1662–1722

Primary Maker: Chinese, Qing Dynasty (1644–1911), Kangxi Period (1662–1722)

Medium: Hard-paste porcelain with underglaze blue

Dimensions: 8 1/8 x 4 9/16 in. (20.7 x 11.6 cm)



Title: Covered Jar (One of a Pair)

Date: 1662–1722

Primary Maker: Chinese, Qing Dynasty (1644–1911), Kangxi Period (1662–1722)

Medium: Hard-paste porcelain with underglaze blue

Dimensions: 7 13/16 x 4 5/8 in. (19.9 x 11.8 cm)



Title: Triple Gourd Vase (One of a Pair)

Date: 1662–1722

Primary Maker: Chinese, Qing Dynasty (1644–1911), Kangxi Period (1662–1722)

Medium: Hard-paste porcelain with underglaze blue

Dimensions: 10 1/8 x 5 1/16 in. (25.7 x 12.8 cm)



Title: Cup and Saucer (One Pair in a Set of Four)

Date: 17th century

Primary Maker: Chinese, Transitional Period (1620–1683)

Medium: Hard-paste porcelain with underglaze blue

Dimensions: 2 1/2 x 4 1/2 in. (6.4 x 11.4 cm)



**Title: Beaker Vase
(One of a Pair)**

Date: 1662–1722

Primary Maker: Chinese,
Qing Dynasty
(1644–1911), Kangxi
Period (1662–1722)

Medium: Hard-paste
porcelain with underglaze
blue

Dimensions: 9 5/16 x 11 13
/16 in. (23.6 x 30 cm)



**Title: Beaker Vase
(One of a Pair)**

Date: 1662–1722

Primary Maker: Chinese,
Qing Dynasty
(1644–1911), Kangxi
Period (1662–1722)

Medium: Hard-paste
porcelain with underglaze
blue

Dimensions: 9 1/4 x 4 3/8
in. (23.5 x 11.1 cm)



**Title: Covered Jar (One
of a Pair)**

Date: 1662–1722

Primary Maker: Chinese,
Qing Dynasty
(1644–1911), Kangxi
Period (1662–1722)

Medium: Hard-paste
porcelain with underglaze
blue

Dimensions: 6 9/16 x 3 15
/16 in. (16.7 x 10 cm)



**Title: Teapot (One of a
Pair)**

Date: 17th century

Primary Maker: Chinese,
Transitional Period
(1620–1683)

Medium: Hard-paste
porcelain with underglaze
blue

Dimensions: 3 1/8 x 2 3/4
in. (7.9 x 7 cm)



**Title: Bottle-Shaped
Vase**

Date: 1662–1722

Primary Maker: Chinese,
Qing Dynasty
(1644–1911), Kangxi
Period (1662–1722)

Medium: Hard-paste
porcelain with underglaze
blue

Dimensions: 7 1/2 x 4 1/8
in. (19.1 x 10.5 cm)



**Title: Bottle-Shaped
Vase**

Date: 1662–1722

Primary Maker: Chinese,
Qing Dynasty
(1644–1911), Kangxi
Period (1662–1722)

Medium: Hard-paste
porcelain with underglaze
blue

Dimensions: 7 3/8 x 4 in.
(18.7 x 10.1 cm)



**Title: Beaker Vase
(One of a Pair)**

Date: 1662–1722

Primary Maker: Chinese,
Qing Dynasty
(1644–1911), Kangxi
Period (1662–1722)

Medium: Hard-paste
porcelain with underglaze
blue

Dimensions: 10 3/16 x 4 13
/16 in. (25.9 x 12.2 cm)



**Title: Bottle-Shaped
Vase with Handles
(One of a Pair)**

Date: 1662–1722

Primary Maker: Chinese,
Qing Dynasty
(1644–1911), Kangxi
Period (1662–1722)

Medium: Hard-paste
porcelain with underglaze
blue

Dimensions: H.: 7 in. (17.8
cm)



**Title: Bottle-Shaped
Vase with Handles
(One of a Pair)**

Date: 1662–1722

Primary Maker: Chinese,
Qing Dynasty
(1644–1911), Kangxi
Period (1662–1722)

Medium: Hard-paste
porcelain with underglaze
blue

Dimensions: 6 15/16 x 2 5
/16 in. (17.7 x 5.9 cm)



Title: Bottle-Shaped Vase with Globular Body
Date: 1662–1722
Primary Maker: Chinese, Qing Dynasty (1644–1911), Kangxi Period (1662–1722)
Medium: Hard-paste porcelain with underglaze blue
Dimensions: 9 1/2 x 5 3/8 in. (24.1 x 13.7 cm)



Title: Low Candlestick (One of a Pair)
Date: 18th century
Primary Maker: Chinese, Qing Dynasty (1644–1911)
Medium: Hard-paste porcelain with underglaze blue
Dimensions: 2 7/8 x 2 7/8 in. (7.3 x 7.3 cm)



Title: Bottle-Shaped Vase (One of a Pair)
Date: 1662–1722
Primary Maker: Chinese, Qing Dynasty (1644–1911), Kangxi Period (1662–1722)
Medium: Hard-paste porcelain with underglaze blue
Dimensions: 6 5/16 x 3 7/16 in. (16.1 x 8.8 cm)



Title: Pricket Candlestick (One of a Pair)
Date: 1736–96
Primary Maker: Chinese, Qing Dynasty (1644–1911), Qianlong Period (1736–1796)
Medium: Hard-paste porcelain with underglaze blue
Dimensions: 5 1/4 x 3 7/8 in. (13.3 x 9.8 cm)



Title: Candlestick (One of a Pair)
Date: 1662–1722
Primary Maker: Chinese, Qing Dynasty (1644–1911), Kangxi Period (1662–1722)
Medium: Hard-paste porcelain with underglaze blue
Dimensions: 7 x 4 in. (17.8 x 10.2 cm)



Title: Pricket Candlestick (One of a Pair)
Date: 1736–96
Primary Maker: Chinese, Qing Dynasty (1644–1911), Qianlong Period (1736–1796)
Medium: Hard-paste porcelain with underglaze blue
Dimensions: 5 1/4 x 3 7/8 in. (13.3 x 9.8 cm)



Title: Baluster Vase (One of a Pair)
Date: 1662–1722
Primary Maker: Chinese, Qing Dynasty (1644–1911), Kangxi Period (1662–1722)
Medium: Hard-paste porcelain with underglaze blue
Dimensions: 5 3/8 x 2 1/16 in. (13.6 x 5.2 cm)



Title: Baluster Vase (One of a Pair)
Date: 1662–1722
Primary Maker: Chinese, Qing Dynasty (1644–1911), Kangxi Period (1662–1722)
Medium: Hard-paste porcelain with underglaze blue
Dimensions: 5 3/16 x 2 in. (13.1 x 5.1 cm)



Title: Slender Beaker with Broad Rim
Date: 1662–1722
Primary Maker: Chinese, Qing Dynasty (1644–1911), Kangxi Period (1662–1722)
Medium: Hard-paste porcelain with underglaze blue
Dimensions: 6 7/8 x 4 1/2 in. (17.4 x 11.5 cm)



Title: Small Saucer

Date: 17th century

Primary Maker: Chinese, Transitional Period (1620–1683)

Medium: Hard-paste porcelain with underglaze blue

Dimensions: 13/16 x 4 5/16 in. (2 x 11 cm)



Title: Water Jug

Date: 1662–1722

Primary Maker: Chinese, Qing Dynasty (1644–1911), Kangxi Period (1662–1722)

Medium: Hard-paste porcelain with underglaze blue

Dimensions: 7 1/8 x 4 5/16 in. (18.1 x 10.9 cm)



Title: Bottle-Shaped Vase Painted with Dragons (One of a Pair)

Date: 1662–1722

Primary Maker: Chinese, Qing Dynasty (1644–1911), Kangxi Period (1662–1722)

Medium: Hard-paste porcelain with underglaze blue

Dimensions: 9 7/8 x 4 3/4 in. (25.1 x 12 cm)



Title: Bottle-Shaped Vase Painted with Dragons (One of a Pair)

Date: 1662–1722

Primary Maker: Chinese, Qing Dynasty (1644–1911), Kangxi Period (1662–1722)

Medium: Hard-paste porcelain with underglaze blue

Dimensions: 9 1/2 x 4 3/4 in. (24.2 x 12.1 cm)



Title: Small Jar (One of a Pair)

Date: 1662–1722

Primary Maker: Chinese, Qing Dynasty (1644–1911), Kangxi Period (1662–1722)

Medium: Hard-paste porcelain with underglaze blue

Dimensions: 5 x 2 13/16 in. (12.7 x 7.1 cm)



Title: Ovoid Vase

Date: 1662–1722

Primary Maker: Chinese, Qing Dynasty (1644–1911), Kangxi Period (1662–1722)

Medium: Hard-paste porcelain with underglaze blue

Dimensions: 8 5/16 x 3 9/16 in. (21.1 x 9 cm)



Title: Bottle-Shaped Vase

Date: 1662–1722

Primary Maker: Chinese, Qing Dynasty (1644–1911), Kangxi Period (1662–1722)

Medium: Hard-paste porcelain with underglaze blue

Dimensions: H.: 3 15/16 in. (10 cm)



Title: Bowl with Everted Lip

Date: 1662–1722

Primary Maker: Chinese, Qing Dynasty (1644–1911), Kangxi Period (1662–1722)

Medium: Hard-paste porcelain with underglaze blue

Dimensions: 3 3/4 x 8 1/2 in. (9.5 x 21.6 cm)



Title: Bottle-Shaped Vase

Date: 1662–1722

Primary Maker: Chinese, Qing Dynasty (1644–1911), Kangxi Period (1662–1722)

Medium: Hard-paste porcelain with underglaze blue

Dimensions: 4 5/16 x 2 5/16 in. (11 x 5.9 cm)



Title: Bowl

Date: 1662–1722

Primary Maker: Chinese, Qing Dynasty (1644–1911), Kangxi Period (1662–1722)

Medium: Hard-paste porcelain with underglaze blue

Dimensions: 2 1/2 x 3 3/4 in. (6.4 x 9.6 cm)



Title: Bottle

Date: 1662–1722

Primary Maker: Chinese, Qing Dynasty (1644–1911), Kangxi Period (1662–1722)

Medium: Hard-paste porcelain with underglaze blue

Dimensions: 3 1/16 x 2 1/4 in. (7.7 x 5.7 cm)



Title: Beaker Vase (One of a Pair)

Date: 1662–1722

Primary Maker: Chinese, Qing Dynasty (1644–1911), Kangxi Period (1662–1722)

Medium: Hard-paste porcelain with underglaze blue

Dimensions: 5 1/4 x 3 5/16 in. (13.3 x 8.4 cm)



Title: Bottle-Shaped Vase

Date: 1662–1722

Primary Maker: Chinese, Qing Dynasty (1644–1911), Kangxi Period (1662–1722)

Medium: Hard-paste porcelain with underglaze blue

Dimensions: 5 5/8 x 2 1/16 in. (14.3 x 5.2 cm)



Title: Snuff Saucer

Date: 1723–35

Medium: Hard-paste porcelain with underglaze blue

Dimensions: 1/4 x 1 5/8 in. (0.7 x 4.1 cm)



Title: Deep Plate (One of a Pair)

Date: 1662–1722

Primary Maker: Chinese, Qing Dynasty (1644–1911), Kangxi Period (1662–1722)

Medium: Hard-paste porcelain with underglaze blue

Dimensions: 2 9/16 x 10 1/2 in. (6.5 x 26.7 cm)



Title: Deep Plate (One of a Pair)

Date: 1662–1722

Primary Maker: Chinese, Qing Dynasty (1644–1911), Kangxi Period (1662–1722)

Medium: Hard-paste porcelain with underglaze blue

Dimensions: 2 1/2 x 10 5/8 in. (6.4 x 27 cm)



Title: Beaker and Cover (One of a Pair)

Date: 17th century

Primary Maker: Chinese, Transitional Period (1620–1683)

Medium: Hard-paste porcelain with underglaze blue

Dimensions: 6 5/16 x 3 1/4 in. (16 x 8.3 cm)



Title: Dragon Jar with Cover (One of a Pair)

Date: 1662–1722

Primary Maker: Chinese, Qing Dynasty (1644–1911), Kangxi Period (1662–1722)

Medium: Hard-paste porcelain with underglaze blue

Dimensions: 4 1/2 x 3 7/16 in. (11.5 x 8.8 cm)



Title: Bottle-Shaped Vase (One of a Set of Three)

Date: 1662–1722

Primary Maker: Chinese, Qing Dynasty (1644–1911), Kangxi Period (1662–1722)

Medium: Hard-paste porcelain with underglaze blue

Dimensions: 5 3/8 x 6 13/16 in. (13.6 x 17.3 cm)



Title: Bottle-Shaped Vase

Date: 18th century

Primary Maker: Chinese, Qing Dynasty (1644–1911)

Medium: Hard-paste porcelain with underglaze blue

Dimensions: 2 13/16 x 2 1/2 in. (7.1 x 6.3 cm)



Title: Bottle-Shaped Vase (One of a Set of Three)

Date: 1662–1722

Primary Maker: Chinese, Qing Dynasty (1644–1911), Kangxi Period (1662–1722)

Medium: Hard-paste porcelain with underglaze blue

Dimensions: 5 9/16 x 2 11/16 in. (14.2 x 6.8 cm)



Title: Beaker-Shaped Vases (One of a Pair)

Date: 1662–1722

Primary Maker: Chinese, Qing Dynasty (1644–1911), Kangxi Period (1662–1722)

Medium: Hard-paste porcelain with underglaze blue

Dimensions: 4 x 2 3/16 in. (10.2 x 5.5 cm)



Title: Beaker-Shaped Vases (One of a Pair)

Date: 1662–1722

Primary Maker: Chinese, Qing Dynasty (1644–1911), Kangxi Period (1662–1722)

Medium: Hard-paste porcelain with underglaze blue

Dimensions: 3 7/8 x 2 5/16 in. (9.8 x 5.8 cm)



Title: Stem Cup (One of a Pair)

Date: 1522–66

Primary Maker: Chinese, Ming Dynasty (1368–1644), Jiajing Period (1522–1566)

Medium: Hard-paste porcelain with underglaze blue

Dimensions: H.: 2 15/16 in. (7.5 cm), D.: 2 7/8 in. (7.3 cm)



Title: Stem Cup (One of a Pair)

Date: 1662–1722

Primary Maker: Chinese, Qing Dynasty (1644–1911), Kangxi Period (1662–1722)

Medium: Hard-paste porcelain with underglaze blue

Dimensions: H.: 2 15/16 in. (7.5 cm), D.: 2 7/8 in. (7.3 cm)



Title: Vase with Cap-Shaped Cover (One of a Pair)

Date: 1662–1722

Primary Maker: Chinese, Qing Dynasty (1644–1911), Kangxi Period (1662–1722)

Medium: Hard-paste porcelain with underglaze blue

Dimensions: 4 11/16 x 1 15/16 in. (11.9 x 5 cm)



Title: Cup with Plain Rim

Date: 1522–66

Primary Maker: Chinese, Ming Dynasty (1368–1644), Jiajing Period (1522–1566)

Medium: Hard-paste porcelain with underglaze blue

Dimensions: 2 1/2 x 4 1/8 in. (6.4 x 10.5 cm)



Title: Wine Cup (One of a Pair)

Date: 18th century

Primary Maker: Chinese, Qing Dynasty (1644–1911)

Medium: Hard-paste porcelain with underglaze blue

Dimensions: H.: 1 1/4 (3.2 cm), D.: 2 11/16 in. (6.8 cm)



Title: Wine Cup (One of a Pair)

Date: 18th century

Primary Maker: Chinese, Qing Dynasty (1644–1911)

Medium: Hard-paste porcelain with underglaze blue

Dimensions: H.: 1 1/4 (3.2 cm), D.: 2 11/16 in. (6.9 cm)



Title: Pestle-Form Vase

Date: 1662–1722

Primary Maker: Chinese, Qing Dynasty (1644–1911), Kangxi Period (1662–1722)

Medium: Hard-paste porcelain with underglaze blue

Dimensions: 4 13/16 x 2 3/16 in. (12.3 x 5.5 cm)



Title: Bowl

Date: 1662–1722

Primary Maker: Chinese, Qing Dynasty (1644–1911), Kangxi Period (1662–1722)

Medium: Hard-paste porcelain with underglaze blue

Dimensions: 4 3/16 x 8 1/4 in. (10.6 x 20.9 cm)



Title: Vase with Cap-Shaped Cover (One of a Pair)

Date: 1662–1722

Primary Maker: Chinese, Qing Dynasty (1644–1911), Kangxi Period (1662–1722)

Medium: Hard-paste porcelain with underglaze blue

Dimensions: 4 3/4 x 1 7/8 in. (12 x 4.7 cm)



Title: Jar with Lid (One of a Pair)

Date: 1662–1722

Primary Maker: Chinese, Qing Dynasty (1644–1911), Kangxi Period (1662–1722)

Medium: Hard-paste porcelain with underglaze blue

Dimensions: 4 1/2 x 1 11/16 in. (11.5 x 4.3 cm)



Title: Jar with Lid (One of a Pair)

Date: 1662–1722

Primary Maker: Chinese, Qing Dynasty (1644–1911), Kangxi Period (1662–1722)

Medium: Hard-paste porcelain with underglaze blue

Dimensions: 4 1/8 x 1 11/16 in. (10.4 x 4.3 cm)



Title: Vase (One of a Pair)

Date: 1662–1722

Primary Maker: Chinese, Qing Dynasty (1644–1911), Kangxi Period (1662–1722)

Medium: Porcelain, blue and white (soft-paste)

Dimensions: 2 11/16 x 1 3/8 x 1 3/8 in. (6.9 x 3.5 x 3.5 cm)



Title: Vase with Broad Neck and Slightly Everted Lip

Date: 1662–1722

Primary Maker: Chinese, Qing Dynasty (1644–1911), Kangxi Period (1662–1722)

Medium: Hard-paste porcelain with underglaze blue

Dimensions: 7 1/2 x 4 in. (19.1 x 10.2 cm)



**Title: Beaker Vase
(One of a Pair)**

Date: 18th century

Primary Maker: Chinese,
Qing Dynasty (1644–1911)

Medium: Hard-paste
porcelain with underglaze
blue

Dimensions: 2 7/8 x 1 1/4
in. (7.3 x 3.1 cm)



**Title: Vase (One of a
Pair)**

Date: 1662–1722

Primary Maker: Chinese,
Qing Dynasty
(1644–1911), Kangxi
Period (1662–1722)

Medium: Porcelain, blue
and white (soft-paste)

Dimensions: 2 11/16 x 1 5
/16 x 1 5/16 in. (6.8 x 3.4 x
3.3 cm)



**Title: Covered Jar of
Inverted Baluster Shape**

Date: 1662–1722

Primary Maker: Chinese,
Qing Dynasty
(1644–1911), Kangxi
Period (1662–1722)

Medium: Hard-paste
porcelain with underglaze
blue

Dimensions: 11 1/2 x 4 1/8
in. (29.2 x 10.5 cm)



**Title: Bottle-Shaped
Vase (One of a Pair)**

Date: 18th century

Primary Maker: Chinese,
Qing Dynasty (1644–1911)

Medium: Hard-paste
porcelain with underglaze
blue

Dimensions: 2 13/16 x 1 5
/8 in. (7.1 x 4.1 cm)



**Title: Four-Legged
Vessel with Spout and
Handle**

Date: 1736–96

Primary Maker: Chinese,
Qing Dynasty
(1644–1911), Qianlong
Period (1736–1796)

Medium: Hard-paste
porcelain with underglaze
blue

Dimensions: H.: 4 3/8 in.
(11.1 cm)



**Title: Covered Jar (One
of a Pair)**

Date: 1662–1722

Primary Maker: Chinese,
Qing Dynasty
(1644–1911), Kangxi
Period (1662–1722)

Medium: Hard-paste
porcelain with underglaze
blue

Dimensions: 6 3/4 x 3 3/4
in. (17.1 x 9.6 cm)



Title: Bottle-Shaped Vase (One of a Pair)

Date: 17th century

Primary Maker: Chinese, Transitional Period (1620–1683)

Medium: Hard-paste porcelain with underglaze blue

Dimensions: 9 13/16 x 4 3/4 in. (25 x 12 cm)



Title: Bottle Vase

Date: 1662–1722

Primary Maker: Chinese, Qing Dynasty (1644–1911), Kangxi Period (1662–1722)

Medium: Hard-paste porcelain with underglaze blue

Dimensions: 4 x 2 1/4 in. (10.2 x 5.7 cm)



Title: Covered Mug with Handle (One of a Pair)

Date: 1662–1722

Primary Maker: Chinese, Qing Dynasty (1644–1911), Kangxi Period (1662–1722)

Medium: Hard-paste porcelain with underglaze blue

Dimensions: 5 1/4 x 3 5/8 in. (13.3 x 9.2 cm)



Title: Covered Mug with Handle (One of a Pair)

Date: 1662–1722

Primary Maker: Chinese, Qing Dynasty (1644–1911), Kangxi Period (1662–1722)

Medium: Hard-paste porcelain with underglaze blue

Dimensions: 5 1/4 x 3 5/8 in. (13.3 x 9.2 cm)



Title: Water Receptacle

Date: 1522–66

Primary Maker: Chinese, Ming Dynasty (1368–1644), Jiajing Period (1522–1566)

Medium: Hard-paste porcelain with underglaze blue

Dimensions: 1 3/16 x 2 3/16 in. (3 x 5.6 cm)



Title: Bowl

Date: 1662–1722

Primary Maker: Chinese, Qing Dynasty (1644–1911), Kangxi Period (1662–1722)

Medium: Hard-paste porcelain with underglaze blue

Dimensions: H.: 3 9/16 in. (9.1 cm)



Title: Dish with Broad Flat Rim

Date: 1662–1722

Primary Maker: Chinese, Qing Dynasty (1644–1911), Kangxi Period (1662–1722)

Medium: Hard-paste porcelain with underglaze blue

Dimensions: H.: 1 1/4 in. (3.2 cm), diam.: 10 1/8 in. (25.7 cm)



Title: Dragon Jar with Cover (One of a Pair)

Date: 1662–1722

Primary Maker: Chinese, Qing Dynasty (1644–1911), Kangxi Period (1662–1722)

Medium: Hard-paste porcelain with underglaze blue

Dimensions: 3 3/8 x 3 9/16 in. (8.5 x 9 cm)



Title: Bowl

Date: 1662–1722

Primary Maker: Chinese, Qing Dynasty (1644–1911), Kangxi Period (1662–1722)

Medium: Hard-paste porcelain with underglaze blue

Dimensions: 3 15/16 x 7 3/4 in. (10 x 19.7 cm)



Title: Bowl
Date: 1662–1722
Primary Maker: Chinese, Qing Dynasty (1644–1911), Kangxi Period (1662–1722)
Medium: Hard-paste porcelain with underglaze blue
Dimensions: 3 3/4 x 8 1/4 in. (9.5 x 20.9 cm)



Title: Jar (One of a Pair)
Date: 1662–1722
Primary Maker: Chinese, Qing Dynasty (1644–1911), Kangxi Period (1662–1722)
Medium: Hard-paste porcelain with underglaze blue
Dimensions: 4 x 2 15/16 in. (10.2 x 7.4 cm)



Title: Dish with Plum-Blossom Decoration
Date: 18th century
Primary Maker: Chinese, Qing Dynasty (1644–1911)
Medium: Hard-paste porcelain with underglaze blue
Dimensions: 1 1/2 x 9 7/8 in. (3.8 x 25.1 cm)



Title: Dish with Foliate Rim
Date: 1662–1722
Primary Maker: Chinese, Qing Dynasty (1644–1911), Kangxi Period (1662–1722)
Medium: Hard-paste porcelain with underglaze blue
Dimensions: 2 1/8 x 10 3/8 in. (5.4 x 26.4 cm)



Title: Wine Cup Warmer (One of a Four-Piece Set)
Date: late 17th–early 18th century
Primary Maker: Chinese, Qing Dynasty (1644–1911)
Medium: Hard-paste porcelain with underglaze blue
Dimensions: 3 15/16 x 2 13/16 in. (10 x 7.2 cm)



Title: Wine Cup Warmer (One of a Four-Piece Set)
Date: late 17th–early 18th century
Primary Maker: Chinese, Qing Dynasty (1644–1911)
Medium: Hard-paste porcelain with underglaze blue
Dimensions: 3 7/8 x 2 15/16 in. (9.8 x 7.5 cm)



Title: Wine Cup (One of a Four-Piece Set)
Date: 18th century
Primary Maker: Chinese, Qing Dynasty (1644–1911)
Medium: Hard-paste porcelain with underglaze blue
Dimensions: 2 x 2 1/4 in. (5.1 x 5.7 cm)



Title: Bowl
Date: 1662–1722
Primary Maker: Chinese, Qing Dynasty (1644–1911), Kangxi Period (1662–1722)
Medium: Hard-paste porcelain with underglaze blue
Dimensions: 3 x 7 1/2 in. (7.6 x 19.1 cm)



Title: Deep Plate (One of a Pair)
Date: 1662–1722
Primary Maker: Chinese, Qing Dynasty (1644–1911), Kangxi Period (1662–1722)
Medium: Hard-paste porcelain with underglaze blue
Dimensions: 8 3/8 x 4 1/4 in. (21.3 x 10.8 cm)



Title: Bowl

Date: 1662–1722

Primary Maker: Chinese, Qing Dynasty (1644–1911), Kangxi Period (1662–1722)

Medium: Hard-paste porcelain with underglaze blue

Dimensions: 3 13/16 x 8 1/4 in. (9.7 x 20.9 cm)



Title: Bowl

Date: 1662–1722

Primary Maker: Chinese, Qing Dynasty (1644–1911), Kangxi Period (1662–1722)

Medium: Hard-paste porcelain with underglaze blue

Dimensions: 3 11/16 x 7 15/16 in. (9.3 x 20.2 cm)



Title: Bowl

Date: 1662–1722

Primary Maker: Chinese, Qing Dynasty (1644–1911), Kangxi Period (1662–1722)

Medium: Hard-paste porcelain with underglaze blue

Dimensions: 4 1/16 x 8 3/8 in. (10.3 x 21.2 cm)



Title: Vase (One of a Pair)

Date: 1662–1722

Primary Maker: Chinese, Qing Dynasty (1644–1911), Kangxi Period (1662–1722)

Medium: Hard-paste porcelain with underglaze blue

Dimensions: 8 1/8 x 4 5/16 in. (20.6 x 10.9 cm)



Title: Vase (One of a Pair)

Date: 1662–1722

Primary Maker: Chinese, Qing Dynasty (1644–1911), Kangxi Period (1662–1722)

Medium: Hard-paste porcelain with underglaze blue

Dimensions: 8 1/4 x 4 1/8 in. (20.9 x 10.4 cm)

Title: Hexagonal Tea Caddie (One of a Pair)

Date: 1662–1722

Primary Maker: Chinese, Qing Dynasty (1644–1911), Kangxi Period (1662–1722)

Medium: Hard-paste porcelain with underglaze blue

Dimensions: 7 1/16 x 3 in. (18 x 7.6 cm)



Title: Hexagonal Tea Caddie (One of a Pair)

Date: 1662–1722

Primary Maker: Chinese, Qing Dynasty (1644–1911), Kangxi Period (1662–1722)

Medium: Hard-paste porcelain with underglaze blue

Dimensions: 6 7/8 x 3 1/16 in. (17.4 x 7.8 cm)



Title: Pi-tung (Brush Holder)

Date: 1662–1722

Primary Maker: Chinese, Qing Dynasty (1644–1911), Kangxi Period (1662–1722)

Medium: Hard-paste porcelain with underglaze blue

Dimensions: 5 9/16 x 4 in. (14.1 x 10.2 cm)



Title: Bottle-Shaped Vase with Handles (One of a Pair)

Date: 1662–1722

Primary Maker: Chinese, Qing Dynasty (1644–1911), Kangxi Period (1662–1722)

Medium: Hard-paste porcelain with underglaze blue

Dimensions: H.: 7 in. (17.8 cm)



Title: Bottle-Shaped Vase

Date: 1662–1722

Primary Maker: Chinese, Qing Dynasty (1644–1911), Kangxi Period (1662–1722)

Medium: Hard-paste porcelain with underglaze blue

Dimensions: 7 13/16 x 3 7/8 in. (19.9 x 9.9 cm)



Title: Plate

Date: 1662–1722

Primary Maker: Chinese, Qing Dynasty (1644–1911), Kangxi Period (1662–1722)

Medium: Hard-paste porcelain with underglaze blue

Dimensions: Diam.: 6 1/8 in. (15.5 cm)



Title: Teapot

Date: 1662–1722

Primary Maker: Chinese, Qing Dynasty (1644–1911), Kangxi Period (1662–1722)

Medium: Hard-paste porcelain with underglaze blue

Dimensions: 4 1/8 x 4 x 6 1/4 in. (10.5 x 10.2 x 15.9 cm)



Title: Saucer and Wine Cup (Two of a Set of Four)

Date: 1662–1722

Primary Maker: Chinese, Qing Dynasty (1644–1911), Kangxi Period (1662–1722)

Medium: Hard-paste porcelain with underglaze blue

Dimensions: Cup: H.: 1 5/8, D.: 2 1/4 in. (4.1 x 5.7 cm)
Saucer: D.: 4 in. (10.2 cm)



Title: Plate

Date: 1662–1722

Primary Maker: Chinese, Qing Dynasty (1644–1911), Kangxi Period (1662–1722)

Medium: Hard-paste porcelain with underglaze blue

Dimensions: 13/16 x 5 5/8 in. (2.1 x 14.3 cm)



Title: Saucer and Wine Cup (Two of a Set of Four)

Date: 1662–1722

Primary Maker: Chinese, Qing Dynasty (1644–1911), Kangxi Period (1662–1722)

Medium: Hard-paste porcelain with underglaze blue

Dimensions: Cup: H.: 1 5/8, D.: 2 1/4 in. (4.1 x 5.7 cm)
Saucer: D.: 4 in. (10.2 cm)



Title: Covered Jar

Date: 1662–1722

Primary Maker: Chinese, Qing Dynasty (1644–1911), Kangxi Period (1662–1722)

Medium: Hard-paste porcelain with underglaze blue

Dimensions: 6 11/16 x 4 13/16 in. (17 x 12.2 cm)



Title: Candlestick Holder

Date: 18th century

Primary Maker: Chinese, Qing Dynasty (1644–1911)

Medium: Hard-paste porcelain with underglaze blue

Dimensions: 1 5/8 x 4 7/16 in. (4.2 x 11.3 cm)



Title: Miniature Vase

Date: 18th century

Primary Maker: Chinese, Qing Dynasty (1644–1911)

Medium: Hard-paste porcelain with underglaze blue

Dimensions: 3 1/16 x 1 7/16 in. (7.7 x 3.7 cm)



Title: Snuff Bottle

Date: 1736–96

Primary Maker: Chinese, Qing Dynasty (1644–1911), Qianlong Period (1736–1796)

Medium: Hard-paste porcelain with underglaze blue

Dimensions: 2 5/8 x 1 3/8 in. (6.7 x 3.5 cm)



Title: Vase

Date: 18th century

Primary Maker: Chinese, Qing Dynasty (1644–1911)

Medium: Hard-paste porcelain with underglaze blue

Dimensions: 3 1/16 x 1 1/8 in. (7.7 x 2.8 cm)



Title: Bowl

Date: 1662–1722

Primary Maker: Chinese, Qing Dynasty (1644–1911), Kangxi Period (1662–1722)

Medium: Hard-paste porcelain with underglaze blue

Dimensions: 4 15/16 x 9 5/16 in. (12.5 x 23.7 cm)



Title: Waterpot

Date: 1662–1722

Primary Maker: Chinese, Qing Dynasty (1644–1911), Kangxi Period (1662–1722)

Medium: Hard-paste porcelain with underglaze blue

Dimensions: 1 5/16 x 2 3/16 in. (3.4 x 5.5 cm)



Title: Saucer (One Pair in a Set of Four)

Date: 17th century

Primary Maker: Chinese, Transitional Period (1620–1683)

Medium: Hard-paste porcelain with underglaze blue

Dimensions: 11/16 x 4 5/16 in. (1.8 x 11 cm)



Title: Baluster Vase with Ladies

Date: 1662–1722

Primary Maker: Chinese, Qing Dynasty (1644–1911), Kangxi Period (1662–1722)

Medium: Hard-paste porcelain with underglaze blue

Dimensions: 4 7/16 x 1 7/8 in. (11.3 x 4.8 cm)



Title: Square Baluster-Form Small Vase

Date: 1662–1722

Primary Maker: Chinese, Qing Dynasty (1644–1911), Kangxi Period (1662–1722)

Medium: Hard-paste porcelain with underglaze blue

Dimensions: 4 1/2 x 1 15/16 x 2 in. (11.5 x 5 x 5.1 cm)



Title: Bottle-Shaped Vase

Date: 1662–1722

Primary Maker: Chinese, Qing Dynasty (1644–1911), Kangxi Period (1662–1722)

Medium: Hard-paste porcelain with underglaze blue

Dimensions: 5 3/16 x 2 15/16 in. (13.2 x 7.5 cm)



Title: Seal Box with Cover

Date: 19th century

Primary Maker: Chinese, Qing Dynasty (1644–1911)

Medium: Hard-paste porcelain with underglaze blue

Dimensions: 1 1/4 x 3 1/4 in. (3.1 x 8.2 cm)



Title: Jar
Date: 1662–1722
Primary Maker: Chinese, Qing Dynasty (1644–1911), Kangxi Period (1662–1722)
Medium: Hard-paste porcelain with underglaze blue
Dimensions: 6 x 2 1/2 in. (15.2 x 6.4 cm)



Title: Snuff Bottle
Date: 18th century
Primary Maker: Chinese, Qing Dynasty (1644–1911)
Medium: Hard-paste porcelain with underglaze blue
Dimensions: 2 5/8 x 1 x 1 in. (6.7 x 2.6 x 2.6 cm)



Title: Bottle-Shaped Vase
Date: 1662–1722
Primary Maker: Chinese, Qing Dynasty (1644–1911), Kangxi Period (1662–1722)
Medium: Hard-paste porcelain with underglaze blue
Dimensions: 7 5/16 x 3 11/16 in. (18.5 x 9.3 cm)



Title: Vase of Inverted Baluster Shape
Date: 1662–1722
Primary Maker: Chinese, Qing Dynasty (1644–1911), Kangxi Period (1662–1722)
Medium: Hard-paste porcelain with underglaze blue
Dimensions: 8 x 5 in. (20.3 x 12.7 cm)



Title: Plate (One of a Set of Four)
Date: 1662–1722
Primary Maker: Chinese, Qing Dynasty (1644–1911)
Medium: Hard-paste porcelain with underglaze blue
Dimensions: 1 5/8 x 10 1/4 in. (4.1 x 26.1 cm)



Title: Plate (One of a Set of Four)
Date: 1662–1722
Primary Maker: Chinese, Qing Dynasty (1644–1911), Kangxi Period (1662–1722)
Medium: Hard-paste porcelain with underglaze blue
Dimensions: 1 7/16 x 10 1/4 in. (3.7 x 26.1 cm)



Title: Plate (One of a Set of Four)
Date: 1662–1722
Primary Maker: Chinese, Qing Dynasty (1644–1911), Kangxi Period (1662–1722)
Medium: Hard-paste porcelain with underglaze blue
Dimensions: 1 7/16 x 10 9/16 in. (3.7 x 26.8 cm)



Title: Barbed and Lobed Bowl Showing the Eight Immortals
Date: ca. 1650
Primary Maker: Chinese, Transitional Period (1620–1683)
Medium: Hard-paste porcelain with underglaze blue
Dimensions: 2 13/16 x 4 3/4 in. (7.1 x 12 cm)



Title: Shallow Plate (One of a Pair)
Date: 1662–1722
Primary Maker: Chinese, Qing Dynasty (1644–1911), Kangxi Period (1662–1722)
Medium: Hard-paste porcelain with underglaze blue
Dimensions: 1 3/8 x 8 9/16 in. (3.5 x 21.8 cm)



**Title: Shallow Plate
(One of a Pair)**

Date: 1662–1722

Primary Maker: Chinese,
Qing Dynasty
(1644–1911), Kangxi
Period (1662–1722)

Medium: Hard-paste
porcelain with underglaze
blue

Dimensions: 1 7/16 x 8 1/4
in. (3.6 x 21 cm)



**Title: Plate (One of a
Set of Four)**

Date: 1662–1722

Primary Maker: Chinese,
Qing Dynasty
(1644–1911), Kangxi
Period (1662–1722)

Medium: Hard-paste
porcelain with underglaze
blue

Dimensions: 1 9/16 x 10 5
/16 in. (4 x 26.2 cm)



**Title: Plate (One of an
Eight-Piece Set)**

Date: 1662–1722

Primary Maker: Chinese,
Qing Dynasty
(1644–1911), Kangxi
Period (1662–1722)

Medium: Hard-paste
porcelain with underglaze
blue

Dimensions: 1 7/16 x 8 1/4
in. (3.6 x 21 cm)



**Title: Low Candlestick
(One of a Pair)**

Date: 18th century

Primary Maker: Chinese,
Qing Dynasty (1644–1911)

Medium: Hard-paste
porcelain with underglaze
blue

Dimensions: 2 3/8 x 2 7/8
in. (6 x 7.3 cm)



**Title: Plate (One of an
Eight-Piece Set)**

Date: 1662–1722

Primary Maker: Chinese,
Qing Dynasty
(1644–1911), Kangxi
Period (1662–1722)

Medium: Hard-paste
porcelain with underglaze
blue

Dimensions: 1 7/16 x 8 1/4
in. (3.6 x 21 cm)



**Title: Plate (One of an
Eight-Piece Set)**

Date: 1662–1722

Primary Maker: Chinese,
Qing Dynasty
(1644–1911), Kangxi
Period (1662–1722)

Medium: Hard-paste
porcelain with underglaze
blue

Dimensions: 1 1/4 x 8 1/8
in. (3.2 x 20.7 cm)



**Title: Plate (One of an
Eight-Piece Set)**

Date: 1662–1722

Primary Maker: Chinese,
Qing Dynasty
(1644–1911), Kangxi
Period (1662–1722)

Medium: Hard-paste
porcelain with underglaze
blue

Dimensions: 1 3/16 x 8 3
/16 in. (3 x 20.8 cm)



**Title: Plate (One of an
Eight-Piece Set)**

Date: 1662–1722

Primary Maker: Chinese,
Qing Dynasty
(1644–1911), Kangxi
Period (1662–1722)

Medium: Hard-paste
porcelain with underglaze
blue

Dimensions: 1 1/8 x 8 1/8
in. (2.9 x 20.6 cm)



**Title: Plate (One of an
Eight-Piece Set)**

Date: 1662–1722

Primary Maker: Chinese,
Qing Dynasty
(1644–1911), Kangxi
Period (1662–1722)

Medium: Hard-paste
porcelain with underglaze
blue

Dimensions: 1 1/4 x 8 1/8
in. (3.2 x 20.6 cm)



Title: Plate (One of an Eight-Piece Set)
Date: 1662–1722
Primary Maker: Chinese, Qing Dynasty (1644–1911), Kangxi Period (1662–1722)
Medium: Hard-paste porcelain with underglaze blue
Dimensions: 1 1/8 x 8 3/16 in. (2.9 x 20.8 cm)



Title: Plate (One of a Pair)
Date: 1662–1722
Primary Maker: Chinese, Qing Dynasty (1644–1911), Kangxi Period (1662–1722)
Medium: Hard-paste porcelain with underglaze blue
Dimensions: Diam.: 8 1/8 in. (20.6 cm)



Title: Plate (One of a Pair)
Date: 1662–1722
Primary Maker: Chinese, Qing Dynasty (1644–1911), Kangxi Period (1662–1722)
Medium: Hard-paste porcelain with underglaze blue
Dimensions: 1 1/4 x 8 1/4 in. (3.1 x 21 cm)



Title: Vase
Date: 1662–1722
Primary Maker: Chinese, Qing Dynasty (1644–1911), Kangxi Period (1662–1722)
Medium: Hard-paste porcelain with underglaze blue
Dimensions: 4 9/16 x 1 15/16 in. (11.6 x 5 cm)



Title: Shallow Plate (One of a Pair)
Date: 17th century
Primary Maker: Chinese, Transitional Period (1620–1683)
Medium: Hard-paste porcelain with underglaze blue
Dimensions: 2 5/8 x 8 3/8 in. (6.7 x 21.3 cm)



Title: Shallow Plate (One of a Pair)
Date: 17th century
Primary Maker: Chinese, Transitional Period (1620–1683)
Medium: Hard-paste porcelain with underglaze blue
Dimensions: 2 5/8 x 5 5/8 in. (6.7 x 14.3 cm)



Title: Cylindrical Covered Jar
Date: 19th century
Primary Maker: European, probably Nineteenth Century
Medium: Porcelain, blue and white, transfer-printed
Dimensions: 5 1/8 x 3 3/8 in. (13 x 8.6 cm)



Title: Hors d'Oeuvres Tray (One of a Pair)
Date: 19th century
Primary Maker: Chinese, Late Qing Dynasty (1644–1911)
Medium: Hard-paste porcelain with underglaze blue
Dimensions: 6 7/16 x 8 11/16 x 8 3/8 in. (16.3 x 22 x 21.3 cm)



Title: Beaker Vase (One of a Pair)
Date: 1662–1722
Primary Maker: Chinese, Qing Dynasty (1644–1911), Kangxi Period (1662–1722)
Medium: Hard-paste porcelain with underglaze blue
Dimensions: 9 5/16 x 4 3/4 in. (23.6 x 12 cm)



Title: Deep Plate (One of a Pair)

Date: 1662–1722

Primary Maker: Chinese, Qing Dynasty (1644–1911), Kangxi Period (1662–1722)

Medium: Hard-paste porcelain with underglaze blue

Dimensions: 2 1/16 x 8 11/16 in. (5.3 x 22 cm)



Title: Beaker Vase (One of a Pair)

Date: 1662–1722

Primary Maker: Chinese, Qing Dynasty (1644–1911), Kangxi Period (1662–1722)

Medium: Hard-paste porcelain with underglaze blue

Dimensions: 9 1/16 x 4 3/4 in. (23 x 12 cm)



Title: Covered Jar (One of a Pair)

Date: 1662–1722

Primary Maker: Chinese, Qing Dynasty (1644–1911), Kangxi Period (1662–1722)

Medium: Hard-paste porcelain with underglaze blue

Dimensions: 7 3/16 x 8 in. (18.3 x 20.3 cm)



Title: Covered Jar (One of a Pair)

Date: 1662–1722

Primary Maker: Chinese, Qing Dynasty (1644–1911), Kangxi Period (1662–1722)

Medium: Hard-paste porcelain with underglaze blue

Dimensions: 7 x 7 13/16 in. (17.8 x 19.8 cm)



Title: Incense Burner (One of Five Pieces)

Date: 17th century

Primary Maker: Chinese, Transitional Period (1620–1683)

Medium: Hard-paste porcelain with underglaze blue

Dimensions: H.: 2 5/8 in. (6.7 cm)



Title: Rosewater Sprinkler (One of a Pair)

Date: 1662–1722

Primary Maker: Chinese, Qing Dynasty (1644–1911), Kangxi Period (1662–1722)

Medium: Hard-paste porcelain with underglaze blue

Dimensions: 6 15/16 x 2 15/16 in. (17.6 x 7.4 cm)



Title: Hors d'Oeuvres Tray (One of a Pair)

Date: 19th century

Primary Maker: Chinese, Late Qing Dynasty (1644–1911)

Medium: Hard-paste porcelain with underglaze blue

Dimensions: 6 7/16 x 8 3/4 x 8 1/8 in. (16.3 x 22.2 x 20.7 cm)



Title: Candlestick (One of Five Pieces)

Date: 17th century

Primary Maker: Chinese, Transitional Period (1620–1683)

Medium: Hard-paste porcelain with underglaze blue

Dimensions: 2 1/4 x 7/8 x 7/8 in. (5.7 x 2.3 x 2.3 cm)



Title: Vase (One of Five Pieces)

Date: 17th century

Primary Maker: Chinese, Transitional Period (1620–1683)

Medium: Hard-paste porcelain with underglaze blue

Dimensions: 2 1/4 x 7/8 x 7/8 in. (5.7 x 2.3 x 2.2 cm)



Title: Vase (One of Five Pieces)

Date: 1620–61

Primary Maker: Chinese, Transitional Period (1620–1683)

Medium: Hard-paste porcelain with underglaze blue

Dimensions: 2 1/4 x 7/8 x 7/8 in. (5.7 x 2.3 x 2.3 cm)



Title: Candlestick (One of Five Pieces)

Date: 17th century

Primary Maker: Chinese, Transitional Period (1620–1683)

Medium: Hard-paste porcelain with underglaze blue

Dimensions: 2 3/16 x 7/8 x 7/8 in. (5.6 x 2.3 x 2.3 cm)



Title: Bowl

Date: 1662–1722

Primary Maker: Chinese, Qing Dynasty (1644–1911), Kangxi Period (1662–1722)

Medium: Hard-paste porcelain with underglaze blue

Dimensions: 4 5/8 x 9 7/16 in. (11.7 x 24 cm)



Title: Reticulated Bowl (One of a Pair)

Date: 17th century

Primary Maker: Chinese, Transitional Period (1620–1683)

Medium: Hard-paste porcelain with underglaze blue

Dimensions: 3 1/4 x 5 7/8 in. (8.2 x 15 cm)



Title: Reticulated Bowl (One of a Pair)

Date: 17th century

Primary Maker: Chinese, Transitional Period (1620–1683)

Medium: Hard-paste porcelain with underglaze blue

Dimensions: 3 1/8 x 5 7/8 in. (7.9 x 15 cm)



Title: Bowl with Everted Lip

Date: 1662–1722

Primary Maker: Chinese, Qing Dynasty (1644–1911), Kangxi Period (1662–1722)

Medium: Hard-paste porcelain with underglaze blue

Dimensions: 3 3/4 x 8 1/8 in. (9.5 x 20.6 cm)



Title: Stem Bowl

Date: 1573–1620

Primary Maker: Chinese, Ming Dynasty (1368–1644), Wanli Period (1573–1620)

Medium: Hard-paste porcelain with underglaze blue

Dimensions: H.: 4 in. (10.2 cm), diam.: 6 in. (15.2 cm)



Title: Bowl

Date: late 16th–early 17th century

Primary Maker: Chinese, Ming Dynasty (1368–1644), Wanli Period (1573–1620)

Medium: Hard-paste porcelain with underglaze blue

Dimensions: 4 9/16 x 8 in. (11.6 x 20.3 cm)



Title: Bowl

Date: 1573–1620

Primary Maker: Chinese, Ming Dynasty (1368–1644), Wanli Period (1573–1620)

Medium: Hard-paste porcelain with underglaze blue

Dimensions: H.: 2 5/8 in. (6.7 cm), diam.: 5 5/8 in. (14.3 cm)



Title: Octagonal Flower Vase

Date: 17th century

Primary Maker: Chinese, Transitional Period (1620–1683)

Medium: Hard-paste porcelain with underglaze blue

Dimensions: 4 1/4 x 5 in. (10.8 x 12.7 cm)



Title: Reticulated Cream Pot or Libation Cup (One of a Pair)

Date: 17th century

Primary Maker: Chinese, Transitional Period (1620–1683)

Medium: Hard-paste porcelain with underglaze blue

Dimensions: 4 x 3 1/4 x 4 3/8 in. (10.2 x 8.3 x 11.1 cm) Foot rim: 2 1/4 x 2 1/2 in. (5.7 x 6.4 cm)



Title: Bottle Vase

Date: second half of the 17th century

Primary Maker: Chinese, Transitional Period (1620–1683)

Medium: Hard-paste porcelain with underglaze blue

Dimensions: 10 3/4 x 7 in. (27.3 x 17.8 cm)



Title: Reticulated Honeycomb-Form Tea-Pot

Date: second half of the 17th century

Primary Maker: Chinese, Transitional Period (1620–1683)

Medium: Hard-paste porcelain with underglaze blue

Dimensions: 4 13/16 x 4 5/8 x 7 1/16 in. (12.2 x 11.7 x 18 cm)



Title: Melon-Shaped Jar

Date: ca. 1600

Primary Maker: Chinese, Ming Dynasty (1368–1644), Wanli Period (1573–1620)

Medium: Hard-paste porcelain with underglaze blue

Dimensions: 4 3/8 x 4 1/8 in. (11.1 x 10.5 cm)



Title: Foliated Deep Box with Wood Lid and Stand

Date: 1573–1620

Primary Maker: Chinese, Ming Dynasty (1368–1644), Wanli Period (1573–1620)

Medium: Hard-paste porcelain with underglaze blue on wood base

Dimensions: 7 5/16 x 5 3/16 in. (18.6 x 13.2 cm)



Title: Molded Biscuit Deep Bowl, "Eight Immortals"
Date: 1573–1620
Primary Maker: Chinese, Ming Dynasty (1368–1644), Wanli Period (1573–1620)
Medium: Hard-paste porcelain with underglaze blue
Dimensions: 3 3/4 x 5 11/16 x 4 5/8 in. (9.5 x 14.5 x 11.7 cm)



Title: Octagonal Saucer
Date: 1522–66
Primary Maker: Chinese, Ming Dynasty (1368–1644), Jiajing Period (1522–1566)
Medium: Hard-paste porcelain with underglaze blue
Dimensions: 1 7/8 x 5 1/16 in. (4.8 x 12.9 cm)



Title: Reticulated Cream Pot or Libation Cup (One of a Pair)
Date: 17th century
Primary Maker: Chinese, Transitional Period (1620–1683)
Medium: Hard-paste porcelain with underglaze blue
Dimensions: 3 15/16 x 11 1/2 in. (10 x 29.2 cm)



Title: Round Box with Dome Lid
Date: 1662–1722
Primary Maker: Chinese, Qing Dynasty (1644–1911), Kangxi Period (1662–1722)
Medium: Hard-paste porcelain with underglaze blue
Dimensions: 4 1/4 x 8 7/16 in. (10.8 x 21.4 cm)



Title: Snuff Bottle
Date: 18th century
Primary Maker: Chinese, Qing Dynasty (1644–1911)
Medium: Hard-paste porcelain with underglaze blue
Dimensions: 3 1/4 x 1 1/8 in. (8.2 x 2.9 cm)



Title: Squat Melon-Form Wine Ewer
Date: 17th century
Primary Maker: Chinese, Transitional Period (1620–1683)
Medium: Hard-paste porcelain with underglaze blue
Dimensions: 3 1/8 x 6 x 3 1/4 in. (8 x 15.2 x 8.3 cm)



Title: Candlestick (One of a Pair)
Date: 1662–1722
Primary Maker: Chinese, Qing Dynasty (1644–1911), Kangxi Period (1662–1722)
Medium: Hard-paste porcelain with underglaze blue
Dimensions: 7 x 4 in. (17.8 x 10.2 cm)



Title: Dish with Foliate Rim
Date: 18th century
Primary Maker: Chinese, Qing Dynasty (1644–1911)
Medium: Hard-paste porcelain with underglaze blue
Dimensions: 1 7/8 x 11 in. (4.8 x 27.9 cm)



Title: Bottle-Shaped Vase with Handles (One of a Pair)
Date: 1662–1722
Primary Maker: Chinese, Qing Dynasty (1644–1911), Kangxi Period (1662–1722)
Medium: Hard-paste porcelain with underglaze blue
Dimensions: 6 7/8 x 2 5/16 in. (17.5 x 5.9 cm)



Title: Plate (One of an Eight-Piece Set)
Date: 1662–1722
Primary Maker: Chinese, Qing Dynasty (1644–1911), Kangxi Period (1662–1722)
Medium: Hard-paste porcelain with underglaze blue
Dimensions: 1 7/16 x 8 1/4 in. (3.6 x 21 cm)



Title: Jar with Cylindrical Lid
Date: 1662–1722
Primary Maker: Chinese, Qing Dynasty (1644–1911), Kangxi Period (1662–1722)
Medium: Hard-paste porcelain with underglaze blue
Dimensions: 4 3/4 x 3 in. (12.1 x 7.6 cm)



Title: Beaker on a Foot Ring (One of a Pair)
Date: 17th century
Primary Maker: Chinese, Transitional Period (1620–1683)
Medium: Hard-paste porcelain with underglaze blue
Dimensions: 5 3/4 x 3 in. (14.6 x 7.6 cm)



Title: Bowl
Date: 1662–1722
Primary Maker: Chinese, Qing Dynasty (1644–1911), Kangxi Period (1662–1722)
Medium: Hard-paste porcelain with underglaze blue
Dimensions: 3 7/8 x 7 11/16 in. (9.9 x 19.6 cm)



Title: Bowl
Date: 1662–1722
Primary Maker: Chinese, Qing Dynasty (1644–1911), Kangxi Period (1662–1722)
Medium: Hard-paste porcelain with underglaze blue
Dimensions: 3 5/8 x 7 15/16 in. (9.2 x 20.1 cm)



Title: Square Beaker-Form Vase
Date: 1736–96
Primary Maker: Chinese, Qing Dynasty (1644–1911), Qianlong Period (1736–1796)
Medium: Hard-paste porcelain with underglaze blue
Dimensions: 2 1/2 x 1 x 1 in. (6.4 x 2.6 x 2.6 cm)



Title: Jar (One of a Pair)
Date: 1723–35
Medium: Hard-paste porcelain with underglaze blue
Dimensions: 2 1/8 x 1/4 in. (5.4 x 0.6 cm)



Title: Deep Plate (One of a Pair)
Date: 1662–1722
Primary Maker: Chinese, Qing Dynasty (1644–1911), Kangxi Period (1662–1722)
Medium: Hard-paste porcelain with underglaze blue
Dimensions: 2 1/16 x 8 11/16 in. (5.3 x 22 cm)



Title: Bottle-Shaped Vase
Date: 1662–1722
Primary Maker: Chinese, Qing Dynasty (1644–1911), Kangxi Period (1662–1722)
Medium: Hard-paste porcelain with underglaze blue
Dimensions: 7 1/2 x 3 3/4 in. (19.1 x 9.5 cm)



**Title: Beaker Vase
(One of a Pair)**

Date: 1662–1722

Primary Maker: Chinese,
Qing Dynasty
(1644–1911), Kangxi
Period (1662–1722)

Medium: Hard-paste
porcelain with underglaze
blue

Dimensions: 5 1/4 × 3 3/8
in. (13.4 × 8.5 cm)



**Title: Bottle-Shaped
Vase (One of a Pair)**

Date: 18th century

Primary Maker: Chinese,
Qing Dynasty (1644–1911)
Medium: Hard-paste
porcelain with underglaze
blue

Dimensions: 2 3/4 × 1 5/8
in. (7 × 4.1 cm)



**Title: Candle
Receptacle**

Date: 1662–1722

Primary Maker: Chinese,
Qing Dynasty
(1644–1911), Kangxi
Period (1662–1722)

Medium: Hard-paste
porcelain with underglaze
blue

Dimensions: 4 5/16 × 2 5/8
in. (10.9 × 6.7 cm)



**Title: Beaker Vase
(One of a Pair)**

Date: 18th century

Primary Maker: Chinese,
Qing Dynasty (1644–1911)
Medium: Hard-paste
porcelain with underglaze
blue

Dimensions: 2 13/16 × 1 3
/16 in. (7.2 × 3 cm)



**Title: Wine Cup (One of
a Four-Piece Set)**

Date: 18th century

Primary Maker: Chinese,
Qing Dynasty (1644–1911)
Medium: Hard-paste
porcelain with underglaze
blue

Dimensions: 2 × 2 5/16 in.
(5.1 × 5.8 cm)



Title: Jar

Date: 18th century

Primary Maker: Chinese,
Qing Dynasty (1644–1911)
Medium: Hard-paste
porcelain with underglaze
blue

Dimensions: 4 3/16 × 4 1/8
in. (10.7 × 10.5 cm)



**Title: Bottle-Shaped
Vase (One of a Pair)**

Date: 1662–1722

Primary Maker: Chinese,
Qing Dynasty
(1644–1911), Kangxi
Period (1662–1722)

Medium: Hard-paste
porcelain with underglaze
blue

Dimensions: 6 1/2 × 3 7/16
in. (16.5 × 8.7 cm)



**Title: Fo Dog on Base
(Buddhist Lion, One of
a Pair)**

Date: 17th century

Primary Maker: Chinese,
Transitional Period
(1620–1683)

Medium: Porcelain on stand
Dimensions: H.: 13 3/4 in.
(34.9 cm) Base: 5 3/4 × 8 3
/4 × 6 1/2 in. (14.6 × 22.2 ×
16.5 cm)



**Title: Fo Dog on Base
(Buddhist Lion, One of
a Pair)**

Date: 17th century

Primary Maker: Chinese,
Transitional Period
(1620–1683)

Medium: Porcelain on stand
Dimensions: H.: 14 1/8 in.
(35.9 cm) Base: 5 3/4 × 8 3
/4 × 6 1/2 in. (14.6 × 22.2 ×
16.5 cm)



Title: Small Vase

Date: 18th century

Primary Maker: Chinese, Qing Dynasty (1644–1911)

Medium: Porcelain with underglaze blue

Dimensions: H.: 4 1/8 in. (10.5 cm), diam.: 3 3/8 in. (8.6 cm)



Title: Bowl with Cover

Date: 1662–1722

Primary Maker: Chinese, Qing Dynasty (1644–1911), Kangxi Period (1662–1722)

Medium: Hard-paste porcelain with underglaze blue

Dimensions: 5 x 5 in. (12.7 x 12.7 cm)



Title: Bottle-Shaped Vase (One of a Set of Three)

Date: 1662–1722

Primary Maker: Chinese, Qing Dynasty (1644–1911), Kangxi Period (1662–1722)

Medium: Hard-paste porcelain with underglaze blue

Dimensions: 5 7/16 x 2 3/4 in. (13.8 x 7 cm)



Title: Bowl

Date: 1662–1722

Primary Maker: Chinese, Qing Dynasty (1644–1911), Kangxi Period (1662–1722)

Medium: Hard-paste porcelain with underglaze blue

Dimensions: 3 3/4 x 7 7/8 in. (9.6 x 20 cm)



Title: Rosewater Sprinkler (One of a Pair)

Date: 1662–1722

Primary Maker: Chinese, Qing Dynasty (1644–1911), Kangxi Period (1662–1722)

Medium: Hard-paste porcelain with underglaze blue

Dimensions: 6 13/16 x 2 7/8 in. (17.3 x 7.3 cm)



Title: Bottle-Shaped Vase

Date: 1662–1722

Primary Maker: Chinese, Qing Dynasty (1644–1911), Kangxi Period (1662–1722)

Medium: Hard-paste porcelain with underglaze blue

Dimensions: 5 1/2 x 3 in. (14 x 7.6 cm)



Title: Triple Gourd Vase (One of a Pair)

Date: 1662–1722

Primary Maker: Chinese, Qing Dynasty (1644–1911), Kangxi Period (1662–1722)

Medium: Hard-paste porcelain with underglaze blue

Dimensions: 9 15/16 x 5 1/4 in. (25.3 x 13.3 cm)



Title: Four Covered Jars with Blue and White Decoration

Date: 18th century

Primary Maker: Chinese, Qing Dynasty (1644–1911), Kangxi Period (1662–1722)

Medium: Hard-paste porcelain decorated with underglaze blue

Dimensions: H.: 10 1/8 in. (25.7 cm), diam.: 8 1/2 in. (21.6 cm)



Title: Four Covered Jars with Blue and White Decoration

Date: 18th century

Primary Maker: Chinese, Qing Dynasty (1644–1911), Kangxi Period (1662–1722)

Medium: Hard-paste porcelain decorated with underglaze blue

Dimensions: H.: 10 1/8 in. (25.7 cm), diam.: 8 1/2 in. (21.6 cm)



Title: Four Covered Jars with Blue and White Decoration

Date: 18th century

Primary Maker: Chinese, Qing Dynasty (1644–1911), Kangxi Period (1662–1722)

Medium: Hard-paste porcelain decorated with underglaze blue

Dimensions: H.: 10 1/8 in. (25.7 cm), diam.: 8 1/2 in. (21.6 cm)



Title: Four Covered Jars with Blue and White Decoration

Date: 18th century

Primary Maker: Chinese, Qing Dynasty (1644–1911), Kangxi Period (1662–1722)

Medium: Hard-paste porcelain decorated with underglaze blue

Dimensions: H.: 10 1/8 in. (25.7 cm), diam.: 8 1/2 in. (21.6 cm)



Title: Teapot

Date: 1720–25

Primary Maker: Du Paquier Porcelain Manufactory

Medium: Hard-paste porcelain and gilt metal mounts

Dimensions: H: 5 1/8 in. (13 cm)



Title: Elephant-Shaped Wine Dispenser

Date: 1740

Primary Maker: Du Paquier Porcelain Manufactory

Medium: Hard-paste porcelain

Dimensions: 9 1/8 × 18 1/4 × 6 in. (23.2 × 46.4 × 15.2 cm)



Title: Tankard

Date: ca. 1730–35

Primary Maker: Du Paquier Porcelain Manufactory

Medium: Hard-paste porcelain

Dimensions: With handle: 7 1/2 × 7 1/4 in. (19.1 × 18.4 cm)



Title: Tureen from the Service for Czarina Anna Ivanovna

Date: ca. 1735

Primary Maker: Du Paquier Porcelain Manufactory

Medium: Hard-paste porcelain

Dimensions: 9 1/8 × 14 3/8 in. (23.2 × 36.5 cm); diam.: 11 3/8 in. (28.9 cm)



Title: Charger from the Trivulzio Service

Date: 1735

Primary Maker: Du Paquier Porcelain Manufactory

Medium: Hard-paste porcelain

Dimensions: Diam.: 14 1/2 in. (36.8 cm)



Title: Charger from the Trivulzio Service

Date: 1735

Primary Maker: Du Paquier Porcelain Manufactory

Medium: Hard-paste porcelain

Dimensions: Diam.: 14 5/8 in. (37.1 cm)



Title: Tureen and Stand

Date: ca. 1730–35

Primary Maker: Du Paquier Porcelain Manufactory

Medium: Hard-paste porcelain

Dimensions: Tureen: 7 × 12 1/2 in. (17.8 × 31.8 cm)
Stand: 16 5/8 × 10 3/8 in. (42.2 × 26.4 cm)



**Title: Two Trembleuse
Cups and a Slop Bowl
with the Arms of
Cardinal Fabio degli
Abbati Olivieri**

Date: ca. 1735

Primary Maker: Du Paquier
Porcelain Manufactory

Medium: Hard-paste
porcelain

Dimensions: Saucers: $1 \frac{5}{8} \times 7 \frac{7}{8} \times 6$ in. (4.1 × 20 × 15.2 cm) (each) Beakers
(with handles): $3 \frac{3}{8} \times 4 \frac{1}{8}$ in. (8.6 × 10.5 cm)
(each) Bowl: H.: $3 \frac{3}{8}$ in.
(8.6 cm); diam.: $8 \frac{3}{4}$ in.
(22.2 cm)



Title: Tobacco Box

Date: ca. 1730

Primary Maker: Du Paquier
Porcelain Manufactory

Medium: Hard-paste
porcelain

Dimensions: $6 \frac{3}{4} \times 4 \frac{7}{8}$
× $3 \frac{7}{8}$ in. (17.1 × 12.4 ×
9.8 cm)



Title: Ewer

Date: 1725–30

Primary Maker: Du Paquier
Porcelain Manufactory

Medium: Hard-paste
porcelain

Dimensions: H.: $8 \frac{5}{8}$ in.
(21.9 cm)



Title: Tankard

Date: 1725–30

Primary Maker: Du Paquier
Porcelain Manufactory

Medium: Hard-paste
porcelain

Dimensions: $5 \frac{7}{8} \times 6 \frac{7}{8}$
in. (14.9 × 17.5 cm);
diam.: $5 \frac{1}{8}$ in. (13 cm)



Title: Tulip Vase

Date: 1725

Primary Maker: Du Paquier
Porcelain Manufactory

Medium: Hard-paste
porcelain

Dimensions: $8 \frac{3}{8} \times 8 \frac{1}{2}$
in. (21.3 × 21.6 cm)



**Title: Two Pot-pourri
Vases with the Arms of
Archbishop Imre
Esterházy of Galántha**

Date: 1735

Primary Maker: Du Paquier
Porcelain Manufactory

Medium: Hard-paste
porcelain

Dimensions: Each: $9 \frac{5}{8} \times 7 \frac{1}{8} \times 3 \frac{7}{8}$ in. (24.4 ×
18.1 × 9.8 cm)



Title: Flasks with Relief Portraits of Emperor Charles VI and Empress Elizabeth Christine

Date: 1725–30

Primary Maker: Du Paquier Porcelain Manufactory

Medium: Hard-paste porcelain

Dimensions: 2016.9.14.1: 7 7/8 × 5 in. (20 × 12.7 cm); diam.: 4 1/2 in. (11.4 cm)
2016.9.14.2: 8 1/8 × 5 1/4 in. (20.6 × 13.3 cm); diam.: 4 1/2 in. (11.4 cm)



Title: Saucer

Date: ca. 1720

Primary Maker: Du Paquier Porcelain Manufactory

Medium: Hard-paste porcelain

Dimensions: H.: 1 1/4 in. (3.2 cm); diam.: 5 in. (12.7 cm)



Title: Saucer

Date: ca. 1720–25

Primary Maker: Du Paquier Porcelain Manufactory

Medium: Hard-paste porcelain

Dimensions: H.: 1 1/4 in. (3.2 cm); diam.: 5 in. (12.7 cm)



Title: Great Bustard

Date: 1732

Primary Maker: Johann Gottlieb Kirchner

Medium: Hard-paste porcelain

Dimensions: 33 × 17 × 11 1/4 in. (83.8 × 43.2 × 28.6 cm)



Title: Teapot

Date: ca. 1713–15

Primary Maker: Meissen Porcelain Manufactory

Medium: Hard-paste porcelain

Dimensions: H.: 6 in. (15.2 cm)



Title: Tea Bowl and Saucer

Date: ca. 1723–24

Primary Maker: Meissen Porcelain Manufactory

Medium: Hard-paste porcelain

Dimensions: Tea Bowl H.: 2 in. (5.1 cm) Saucer diam.: 5 1/16 in. (12.9 cm)



Title: Cup and Saucer from the "Swan" Service

Date: ca. 1737–40

Primary Maker: Meissen Porcelain Manufactory

Medium: Hard-paste porcelain

Dimensions: Cup H.: 3 3/8 in. (8.6 cm); diam.: 3 in. (7.6 cm); Saucer diam.: 5 7/8 in. (14.9 cm)



Title: Tea Bowl and Saucer

Date: ca. 1723–24

Primary Maker: Meissen Porcelain Manufactory

Medium: Hard-paste porcelain

Dimensions: Saucer diam.: 5 1/16 in. (12.8 cm)



Title: Spicebox from the "Swan" Service

Date: ca. 1737–41

Primary Maker: Meissen Porcelain Manufactory

Medium: Hard-paste porcelain

Dimensions: 2 5/8 × 4 5/8 × 4 1/8 in. (6.7 × 11.8 × 10.5 cm)



Title: Beaker with Silver Gilt Cover and Mounts
Date: ca. 1725–35
Primary Maker: Meissen Porcelain Manufactory
Medium: Hard-paste porcelain with silver-gilt mounts
Dimensions: H.: 4 1/4 in. (10.8 cm)



Title: Dish
Date: ca. 1729–31
Primary Maker: Meissen Porcelain Manufactory
Medium: Hard-paste porcelain
Dimensions: Diam.: 8 3/4 in. (22.2 cm)



Title: Plate
Date: ca. 1724
Primary Maker: Meissen Porcelain Manufactory
Medium: Hard-paste porcelain
Dimensions: Diam.: 9 7/16 in. (24 cm)



Title: Turkish Male Figure
Date: ca. 1725
Primary Maker: Meissen Porcelain Manufactory
Medium: Hard-paste porcelain
Dimensions: H.: 4 1/4 in. (11 cm)



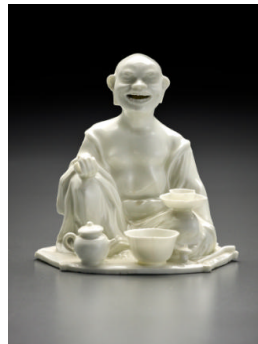
Title: Turkish Female Figure
Date: ca. 1725
Primary Maker: Meissen Porcelain Manufactory
Medium: Hard-paste porcelain
Dimensions: H.: 4 in. (10.7 cm)



Title: Stand
Date: ca. 1740
Primary Maker: Meissen Porcelain Manufactory
Medium: Hard-paste porcelain
Dimensions: Diam.: 12 5/8 in. (32 cm)



Title: Lobed Teapot
Date: ca. 1735
Primary Maker: Meissen Porcelain Manufactory
Medium: Hard-paste porcelain
Dimensions: H. (without lid): 5 in. (12.7 cm); H. (with lid): 7 in. (18 cm)



Title: Incense Burner in the Form of a Seated Buddhist Divinity
Date: ca. 1715–20
Primary Maker: Meissen Porcelain Manufactory
Medium: Hard-paste porcelain
Dimensions: H.: 3 7/8 in. (9.8 cm)



Title: Brush Handle from the Toilette Service Sent to the Queen of Naples
Date: ca. 1745–47
Primary Maker: Meissen Porcelain Manufactory
Medium: Hard-paste porcelain
Dimensions: 1 3/4 × 4 1/8 × 5 1/4 in. (4.4 × 10.5 × 13.3 cm)



Title: Dish from the "Red Dragon" Service
Date: ca. 1730–35
Primary Maker: Meissen Porcelain Manufactory
Medium: Hard-paste porcelain
Dimensions: Diam.: 13 3/8 in. (34.1 cm)



Title: Stand for a Tureen
Date: ca. 1740
Primary Maker: Meissen Porcelain Manufactory
Medium: Hard-paste porcelain
Dimensions: Diam.: 16 5/8 in. (42.5 cm)



Title: Small Two-Handled Bowl with Cover
Date: 1735 or 1738
Primary Maker: Meissen Porcelain Manufactory
Medium: Hard-paste porcelain
Dimensions: H., 3 3/4 in. (9.5 cm)

Title: Dish
Date: ca. 1730
Primary Maker: Meissen Porcelain Manufactory
Medium: Hard-paste porcelain
Dimensions: 11 1/16 in. (28.2 cm)

Title: Teapot
Date: 1722
Primary Maker: Meissen Porcelain Manufactory
Medium: Hard-paste porcelain
Dimensions: H. (with cover): 4 1/4 in. (10.8 cm); H. (without cover): 3 in. (7.6 cm)



Title: Tea Caddy
Date: ca. 1715
Primary Maker: Meissen Porcelain Manufactory
Medium: Hard-paste porcelain
Dimensions: H.: 6 1/16 in. (15.4 cm)



Title: Bowl and Saucer
Date: ca. 1720
Primary Maker: Meissen Porcelain Manufactory
Medium: Hard-paste porcelain
Dimensions: Tea bowl H.: 1 3/4 in. (4.4 cm); Saucer diam.: 5 1/8 in. (13.0 cm)



Title: Tea Caddy
Date: ca. 1715
Primary Maker: Meissen Porcelain Manufactory
Medium: Hard-paste porcelain
Dimensions: H.: 6 in. (15.2 cm)



Title: Quatrefoil-Shaped Bowl
Date: probably 1740
Primary Maker: Meissen Porcelain Manufactory
Medium: Hard-paste porcelain
Dimensions: Diam.: 9 1/8 in. (23.8 cm)



Title: Tankard with Silver-Gilt Cover and Mounts

Date: ca. 1725–30

Primary Maker: Meissen Porcelain Manufactory

Medium: Hard-paste porcelain with silver-gilt mounts

Dimensions: H.: 7 1/4 in. (18.5 cm)



Title: Teapot

Date: ca. 1713

Primary Maker: Meissen Porcelain Manufactory

Medium: Hard-paste porcelain

Dimensions: H.: 4 3/8 in. (11 cm)



Title: Coffee Pot with Mounted Cover

Date: ca. 1725–30

Primary Maker: Meissen Porcelain Manufactory

Medium: Hard-paste porcelain with gilt-metal mounts

Dimensions: H.: 8 in. (20.3 cm)



Title: Tea Bowl and Saucer

Date: ca. 1740

Primary Maker: Meissen Porcelain Manufactory

Medium: Hard-paste porcelain

Dimensions: Tea bowl H.: 1 3/4 in. (4.4 cm); Saucer diam.: 5 in. (12.7 cm)



Title: Plate from the "Coronation" Service

Date: ca. 1733–34

Primary Maker: Meissen Porcelain Manufactory

Medium: Hard-paste porcelain

Dimensions: Diam.: 9 in. (22.8 cm)



Title: Small Bowl

Date: ca. 1726

Primary Maker: Meissen Porcelain Manufactory

Medium: Hard-paste porcelain

Dimensions: Diam.: 5 1/4 in. (13.3 cm)



Title: Tea Bowl and Saucer

Date: ca. 1715–20

Primary Maker: Meissen Porcelain Manufactory

Medium: Hard-paste porcelain

Dimensions: Tea bowl H.: 1 3/4 in. (4.4 cm); diam.: 2 7/8 in. (7.3 cm); Saucer diam.: 5 in. (12.7 cm)



Title: Teapot

Date: ca. 1713

Primary Maker: Meissen Porcelain Manufactory

Medium: Hard-paste porcelain

Dimensions: H.: 5 5/8 in. (14.3 cm)



Title: Tea Bowl and Saucer

Date: ca. 1715

Primary Maker: Meissen Porcelain Manufactory

Medium: Hard-paste porcelain

Dimensions: Tea bowl H.: 1 3/4 in. (4.4 cm); Saucer diam.: 1 1/4 in. (3.3 cm)



Title: Beaker and Trembleuse Saucer
Date: ca. 1717–18
Primary Maker: Meissen Porcelain Manufactory
Medium: Hard-paste porcelain
Dimensions: Beaker H.: 3 1/8 in. (7.9 cm); Saucer diam.: 5 3/4 in. (14.7 cm)



Title: Beaker and Saucer
Date: ca. 1723
Primary Maker: Meissen Porcelain Manufactory
Medium: Hard-paste porcelain
Dimensions: Beaker H.: 3 1/8 in. (7.9 cm); Saucer diam.: 5 in. (12.7 cm)



Title: Saucer
Date: ca. 1724–25
Primary Maker: Meissen Porcelain Manufactory
Medium: Hard-paste porcelain
Dimensions: Diam.: 5 in. (12.7 cm)



Title: Vase
Date: ca. 1723
Primary Maker: Meissen Porcelain Manufactory
Medium: Hard-paste porcelain
Dimensions: H.: 9 1/2 in. (24.1 cm)

Title: Plate
Date: ca. 1735
Primary Maker: Meissen Porcelain Manufactory
Medium: Hard-paste porcelain
Dimensions: Diam.: 8 5/8 in. (22 cm)

Title: Plate from the “St. Andrew” Service for Empress Elizabeth of Russia
Date: 1744–45
Primary Maker: Meissen Porcelain Manufactory
Medium: Hard-paste porcelain
Dimensions: Diam.: 9 3/4 in. (24.8 cm)



Title: Two Plates from the “Brühl'sche Allerlei” Service
Date: 1743–47
Primary Maker: Meissen Porcelain Manufactory
Medium: Hard-paste porcelain
Dimensions: Diam.: 10 3/8 in. (26.5 cm)

Title: Vase with Cover
Date: ca. 1730
Primary Maker: Meissen Porcelain Manufactory
Medium: Hard-paste porcelain
Dimensions: H.: 14 1/2 in. (36.8 cm)



Title: Two-Handled Beaker and Saucer
Date: ca. 1730–35
Primary Maker: Meissen Porcelain Manufactory
Medium: Hard-paste porcelain
Dimensions: Beaker H.: 2 7/8 in. (7.3 cm); Saucer diam.: 5 in. (12.7 cm)



Title: Tea Caddy

Date: 1730–35

Primary Maker: Meissen
Porcelain Manufactory

Medium: Hard-paste
porcelain

Dimensions: H.: 4 1/4 in.
(10.8 cm)



Title: Plate

Date: ca. 1725–30

Primary Maker: Meissen
Porcelain Manufactory

Medium: Hard-paste
porcelain

Dimensions: Diam.: 8 3/4 in.
(22.4 cm)



Title: River God

Date: ca. 1740

Primary Maker: Meissen
Porcelain Manufactory

Medium: Hard-paste
porcelain

Dimensions: H.: 5 3/4 in.
(14.6 cm)



Title: Bowl

Date: ca. 1730–35

Primary Maker: Meissen
Porcelain Manufactory

Medium: Hard-paste
porcelain

Dimensions: H.: 4 in. (10.2
cm); diam.: 7 3/4 in. (19.7
cm)



**Title: Small Pot from
the "Sulkowski" Service**

Date: ca. 1737

Primary Maker: Meissen
Porcelain Manufactory

Medium: Hard-paste
porcelain

Dimensions: H.: 8 1/4 in.
(21 cm)



Title: Shallow Dish

Date: ca. 1725–30

Primary Maker: Meissen
Porcelain Manufactory

Medium: Hard-paste
porcelain

Dimensions: Diam., 8 1/4 in.
(21 cm)



**Title: Snuffbox with Gilt-
Metal Mount and Cover**

Date: ca. 1737–40

Primary Maker: Meissen
Porcelain Manufactory

Medium: Hard-paste
porcelain with gilt-metal
mounts

Dimensions: H.: 2 1/8 in.
(5.4 cm)



**Title: Mounted Group:
"La Cage"**

Date: ca. 1740–45

Primary Maker: Meissen
Porcelain Manufactory

Medium: Hard-paste
porcelain with gilt-bronze
mounts

Dimensions: H.: 15 3/4 in.
(40 cm)



**Title: Two Plates from
the "Yellow Hunting"
Service**

Date: ca. 1733–34

Primary Maker: Meissen
Porcelain Manufactory

Medium: Hard-paste
porcelain

Dimensions: 2016.15.171.1
diam.: 8 15/16 in. (22.7
cm) 2016.15.171.2 diam.:
9 in. (22.9 cm)



Title: Figure of Hofnarr Fröhlich
Date: 1738
Primary Maker: Meissen Porcelain Manufactory
Medium: Hard-paste porcelain
Dimensions: H.: 9 3/4 in. (24.8 cm)



Title: Tea, Coffee and Chocolate Service
Date: ca. 1720-25
Primary Maker: Meissen Porcelain Manufactory
Medium: Hard-paste porcelain, leather, velvet
Dimensions: Teapot H.: 5 in. (12.7 cm) Waste bowl H.: 3 in. (7.6 cm); diam.: 6 7/8 in. (17.5 cm) Tea Caddy H.: 4 3/8 in. (11.1 cm) Sugar Box H.: 3 in. (7.6 cm) Two-Handled Beaker H. (each): 3 in. (7.6 cm) Tea Bowls max. H.: 1 3/4 in. (4.4 cm) Saucers max. diam.: 5 1/8 in. (13 cm) Coffeepot H.: 8 in. (20.3 cm)



Title: Stand
Date: ca. 1730
Primary Maker: Meissen Porcelain Manufactory
Medium: Hard-paste porcelain
Dimensions: Diam.: 10 1/8 in. (25.7 cm)



Title: Two Birds of Paradise
Date: ca. 1733
Primary Maker: Meissen Porcelain Manufactory
Medium: Hard-paste porcelain
Dimensions: H. (each): 9 1/4 in. (23.5 cm)



Title: Pair of Hoopoes ("Wiedehopf") on Tree Trunks
Date: 1736
Primary Maker: Meissen Porcelain Manufactory
Medium: Hard-paste porcelain
Dimensions: H.: 12 3/16 in. (31 cm)



Title: Vase
Date: ca. 1725-30
Primary Maker: Meissen Porcelain Manufactory
Medium: Hard-paste porcelain
Dimensions: H.: 15 in. (38.1 cm)



Title: An Actor from the Commedia dell'Arte

Date: ca. 1725

Primary Maker: Meissen Porcelain Manufactory

Medium: Hard-paste porcelain

Dimensions: H.: 6 9/16 in. (16.7 cm) Base: 2 x 2 3/8 in. (5.1 x 6 cm)



Title: Mustard Pot and Cruet

Date: ca. 1737-39

Primary Maker: Meissen Porcelain Manufactory

Medium: Hard-paste porcelain

Dimensions: 1933.253 H.: 7 in. (17.8 cm) 1933.254 H.: 7 1/2 in. (19.1 cm)



Title: Vase with Cover

Date: ca. 1725

Primary Maker: Meissen Porcelain Manufactory

Medium: Hard-paste porcelain

Dimensions: H. (with cover): 9 1/4 in. (23.5 cm)



Title: Bowl

Date: ca. 1730

Primary Maker: Meissen Porcelain Manufactory

Medium: Hard-paste porcelain

Dimensions: H.: 3 3/8 in. (8.6 cm) Diam.: 7 3/4 in. (19.7 cm)



Title: Pot-pourri à Vaisseau

Date: 1760

Primary Maker: Sèvres Porcelain Manufactory

Medium: Soft-paste porcelain, with later gilt-bronze mount

Dimensions: 17 1/2 x 14 7/8 x 7 1/2 in. (44.5 x 37.8 x 19.1 cm)



Title: Vase à Oreilles (one of a pair)

Date: 1760

Primary Maker: Sèvres Porcelain Manufactory

Medium: Soft-paste porcelain, with later addition of gilt-bronze base

Dimensions: H.: 12 1/2 in. (31.8 cm), diam.: 6 5/8 in. (16.8 cm)



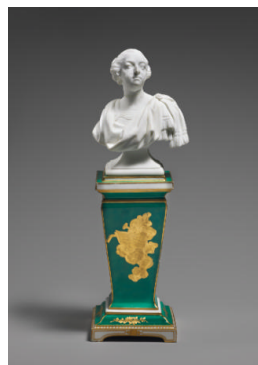
Title: Vase à Oreilles (one of a pair)

Date: 1760

Primary Maker: Sèvres Porcelain Manufactory

Medium: Soft-paste porcelain, with later addition of gilt-bronze base

Dimensions: H.: 12 1/2 in. (31.8 cm), diam.: 6 5/8 in. (16.8 cm)



Title: Bust of Louis XV, after J.-B. Lemoyne

Date: ca. 1760

Primary Maker: Sèvres Porcelain Manufactory

Medium: Soft-paste porcelain on a glazed pedestal

Dimensions: 4 7/16 x 3 9/16 in. (11.3 x 9 cm) Base: 3 3/16 in.



Title: Sugar Bowl

Date: 1764

Primary Maker: Sèvres Porcelain Manufactory

Medium: Soft-paste porcelain

Dimensions: H.: 4 7/16 in. (11.3 cm), diam.: 3 13/16 in. (9.7 cm)



**Title: Pot-pourri
Feuilles de Mirte or à
Feuillages**

Date: ca. 1762

Primary Maker: Sèvres
Porcelain Manufactory

Medium: Soft-paste
porcelain, with later
addition of gilt-bronze
mount

Dimensions: 11 × 6 3/4 ×
5 1/4 in. (27.9 × 17.1 ×
13.3 cm)



**Title: Pot-pourri
Feuilles de Mirte or à
Feuillages**

Date: ca. 1762

Primary Maker: Sèvres
Porcelain Manufactory

Medium: Soft-paste
porcelain, with later
addition of gilt-bronze
mount

Dimensions: 11 × 6 3/4 ×
5 1/4 in. (27.9 × 17.1 ×
13.3 cm)



**Title: Pot-pourri
Feuilles de Mirte or à
Feuillages**

Date: ca. 1762

Primary Maker: Sèvres
Porcelain Manufactory

Medium: Soft-paste
porcelain, with later
addition of gilt-bronze
mount

Dimensions: 14 3/16 × 8 1
/2 × 7 1/8 in. (36 × 21.6 ×
18.1 cm)



**Title: Lozenge-Shaped
Tray with Roses,
Turquoise Blue Ground**

Date: 1769

Primary Maker: Sèvres
Porcelain Manufactory

Medium: Soft-paste
porcelain

Dimensions: 2 7/16 × 13 3
/4 × 10 3/4 in. (6.2 × 34.9
× 27.3 cm)



**Title: Sugar Bowl from
a Tea Service (one of
eleven pieces)**

Date: 1767

Primary Maker: Sèvres
Porcelain Manufactory

Medium: Soft-paste
porcelain

Dimensions: H.: 4 3/4 in.
(12.1 cm), diam.: 3 7/8 in.
(9.8 cm)



**Title: Milk Jug from a
Tea Service (one of
eleven pieces)**

Date: 1767

Primary Maker: Sèvres
Porcelain Manufactory

Medium: Soft-paste
porcelain

Dimensions: 4 7/8 × 5 × 3
1/2 in. (12.4 × 12.7 × 8.9
cm)



**Title: Saucer from a
Tea Service (one of
eleven pieces)**

Date: 1767

Primary Maker: Sèvres
Porcelain Manufactory

Medium: Soft-paste
porcelain

Dimensions: Diam.: 5 3/8
in. (13.7 cm); d.: 1 3/8 in.
(3.5 cm)



**Title: Cup from a Tea
Service (one of eleven
pieces)**

Date: 1767

Primary Maker: Sèvres
Porcelain Manufactory

Medium: Soft-paste
porcelain

Dimensions: 2 3/8 × 3 11
/16 × 2 7/8 in. (6 × 9.4 ×
7.3 cm)



**Title: Saucer from a
Tea Service (one of
eleven pieces)**

Date: 1767

Primary Maker: Sèvres
Porcelain Manufactory

Medium: Soft-paste
porcelain

Dimensions: H.: 1 3/8 in.
(3.5 cm), diam.: 5 3/8 in.
(13.7 cm)



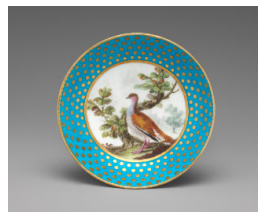
Title: Cup from a Tea Service (one of eleven pieces)

Date: 1767

Primary Maker: Sèvres Porcelain Manufactory

Medium: Soft-paste porcelain

Dimensions: 2 3/8 x 3 11/16 x 2 7/8 in. (6 x 9.4 x 7.3 cm)



Title: Saucer from a Tea Service (one of eleven pieces)

Date: 1767

Primary Maker: Sèvres Porcelain Manufactory

Medium: Soft-paste porcelain

Dimensions: H.: 1 3/8 in. (3.5 cm), diam.: 5 3/8 in. (13.7 cm)



Title: Cup from a Tea Service (one of eleven pieces)

Date: 1767

Primary Maker: Sèvres Porcelain Manufactory

Medium: Soft-paste porcelain

Dimensions: 2 3/8 x 3 11/16 x 2 7/8 in. (6 x 9.4 x 7.3 cm)



Title: Saucer from a Tea Service (one of eleven pieces)

Date: 1767

Primary Maker: Sèvres Porcelain Manufactory

Medium: Soft-paste porcelain

Dimensions: H.: 1 3/8 in. (3.5 cm), diam.: 5 3/8 in. (13.7 cm)



Title: Cup from a Tea Service (one of eleven pieces)

Date: 1767

Primary Maker: Sèvres Porcelain Manufactory

Medium: Soft-paste porcelain

Dimensions: 2 3/8 x 3 11/16 x 2 7/8 in. (6 x 9.4 x 7.3 cm)



Title: Plate (Part of a Dessert Service)

Date: 1782

Primary Maker: Sèvres Porcelain Manufactory

Medium: Soft-paste porcelain

Dimensions: Diam.: 9 1/2 in. (23.8 cm); d.: 1 1/8 in. (2.9 cm)



Title: Teapot from a Tea Service (one of eleven pieces)

Date: 1767

Primary Maker: Sèvres Porcelain Manufactory

Medium: Soft-paste porcelain

Dimensions: 5 3/8 x 7 3/16 x 4 1/8 in. (13.7 x 18.3 x 10.5 cm)



Title: Round Fruit Dish (Part of a Dessert Service)

Date: 1782

Primary Maker: Sèvres Porcelain Manufactory

Medium: Soft-paste porcelain

Dimensions: Diam.: 8 1/4 in. (21 cm); d.: 1 9/16 in. (4 cm)



Title: Plate (Part of a Dessert Service)

Date: 1782

Primary Maker: Sèvres Porcelain Manufactory

Medium: Soft-paste porcelain

Dimensions: Diam.: 9 3/8 in. (23.8 cm); d.: 1 1/4 in. (3.2 cm)



**Title: Square Fruit Dish
(Part of a Dessert
Service)**

Date: 1782

Primary Maker: Sèvres
Porcelain Manufactory

Medium: Soft-paste
porcelain

Dimensions: 8 5/8 × 8 5/8
× 1 3/4 in. (21.9 × 21.9 ×
4.4 cm)



**Title: Square Fruit Dish
(Part of a Dessert
Service)**

Date: 1782

Primary Maker: Sèvres
Porcelain Manufactory

Medium: Soft-paste
porcelain

Dimensions: 8 3/8 × 8 3/8
× 1 3/4 in. (21.3 × 21.3 ×
4.4 cm)



**Title: Plate (Part of a
Dessert Service)**

Date: 1782

Primary Maker: Sèvres
Porcelain Manufactory

Medium: Soft-paste
porcelain

Dimensions: Diam.: 9 3/8
in. (23.8 cm); d.: 1 1/8 in.
(2.9 cm)



**Title: Round Fruit Dish
(Part of a Dessert
Service)**

Date: 1782

Primary Maker: Sèvres
Porcelain Manufactory

Medium: Soft-paste
porcelain

Dimensions: Diam.: 8 3/8
in. (21.3 cm); d.: 1 9/16 in.
(4 cm)



**Title: Small Basket-
Shaped Jardinière,
Turquoise Blue Trim**

Date: ca. 1756–57

Primary Maker: Sèvres
Porcelain Manufactory

Medium: Soft-paste
porcelain

Dimensions: 3 1/16 × 4 5/8
× 4 9/16 in. (7.8 × 11.7 ×
11.6 cm)



**Title: Candlestick with
Floral Sprays, Partial
Turquoise Blue Ground**

Date: 1760

Primary Maker: Sèvres
Porcelain Manufactory

Medium: Soft-paste
porcelain

Dimensions: 2 3/4 × 6 3/8 ×
4 3/4 in. (7 × 16.2 × 12.1
cm)



**Title: Sugar Bowl
(Sucrier Calabre)**

Date: 1756

Primary Maker: Sèvres
Porcelain Manufactory

Medium: Soft-paste
porcelain

Dimensions: H.: 3 15/16 in.
(10 cm), diam.: 3 5/8 in.
(9.2 cm)



**Title: Fan-Shaped
Jardinière and Stand
with Children,
Turquoise Blue Ground**

Date: 1755

Primary Maker: Sèvres
Porcelain Manufactory

Medium: Soft-paste
porcelain

Dimensions: 7 3/8 × 7 11
/16 × 5 11/16 in. (18.7 ×
19.5 × 14.4 cm)



**Title: Plate (Part of a
Dessert Service)**

Date: 1782

Primary Maker: Sèvres
Porcelain Manufactory

Medium: Soft-paste
porcelain

Dimensions: Diam.: 9 1/2
in. (24.1 cm); d.: 1 1/8 in.
(2.9 cm)



Title: Square Tray with Bracket-Shaped Sides and Floral Sprays

Date: 1764

Primary Maker: Sèvres Porcelain Manufactory

Medium: Soft-paste porcelain

Dimensions: 7 x 6 13/16 x 1 5/8 in. (17.8 x 17.3 x 4.1 cm)



Title: Small Basket-Shaped Jardinière, Turquoise Blue Trim

Date: ca. 1756–57

Primary Maker: Sèvres Porcelain Manufactory

Medium: Soft-paste porcelain

Dimensions: 3 x 5 1/4 in. (7.6 x 13.3 cm)



Title: Small Four-Lobed Jardinière with Birds, Turquoise Blue Ground

Date: ca. 1756

Primary Maker: Sèvres Porcelain Manufactory

Medium: Soft-paste porcelain

Dimensions: 3 5/8 x 5 3/8 x 5 3/8 in. (9.2 x 13.7 x 13.7 cm)



Title: Cubical Jardinière with Cupids and Trophies, Turquoise Blue Ground

Date: 1769

Primary Maker: Sèvres Porcelain Manufactory

Medium: Soft-paste porcelain

Dimensions: 5 3/4 x 3 9/16 in. (14.6 x 9 cm)



Title: Basin

Date: 1766

Primary Maker: Sèvres Porcelain Manufactory

Medium: Soft-paste porcelain

Dimensions: 2 7/8 x 10 3/4 x 8 3/8 in. (7.3 x 27.3 x 21.3 cm)



Title: Cubical Jardinière with Cupids and Trophies, Turquoise Blue Ground

Date: 1769

Primary Maker: Sèvres Porcelain Manufactory

Medium: Soft-paste porcelain

Dimensions: 5 3/4 x 3 9/16 in. (14.6 x 9 cm)



Title: Water Jug

Date: 1781

Primary Maker: Sèvres Porcelain Manufactory

Medium: Soft-paste porcelain with gilt metal

Dimensions: 8 1/4 x 5 5/8 x 5 1/8 in. (21 x 14.3 x 13 cm)



Title: Water Jug

Date: 1776

Primary Maker: Sèvres Porcelain Manufactory

Medium: Soft-paste porcelain with gilt metal

Dimensions: 7 3/4 x 5 3/4 x 5 in. (19.7 x 14.6 x 12.7 cm)



Title: Oval Jardinière with Birds, Turquoise Blue Ground

Date: 1760

Primary Maker: Sèvres Porcelain Manufactory

Medium: Soft-paste porcelain

Dimensions: 4 3/8 x 9 3/8 x 4 5/8 in. (11.1 x 23.8 x 11.7 cm)



Title: Basin

Date: 1781

Primary Maker: Sèvres
Porcelain Manufactory

Medium: Soft-paste
porcelain with gilt metal

Dimensions: 11 7/16 x 9 7/8 x 3 1/8 in. (29.1 x 25.1 x 7.9 cm)



**Title: Inkstand with
Turquoise Blue Ground
and Gilt-Bronze Mounts**

Date: 18th century

Primary Maker: Sèvres
Porcelain Manufactory

Medium: Soft-paste
porcelain and gilt-bronze
mounts

Dimensions: 3 3/8 x 9 3/8 x
4 1/2 in. (8.6 x 23.8 x 11.4
cm)



**Title: Fan-Shaped
Jardinière and Stand
with Shepherd Scene,
Turquoise Blue Ground**

Date: ca. 1760

Primary Maker: Sèvres
Porcelain Manufactory

Medium: Soft-paste
porcelain

Dimensions: 6 7/8 x 6 7/8 x
4 7/8 in. (17.5 x 17.5 x
12.4 cm)



Title: Vase Japon

Date: 1774

Primary Maker: Sèvres
Porcelain Manufactory

Medium: Hard-paste
porcelain with silver-gilt
mount

Dimensions: H.: 10 1/2 in.
(26.7 cm), diam.: 8 in.
(20.3 cm)