

Basic Report



Title: The Dance of Time
Time: Three Nymphs Supporting a Clock
Date: 1788
Primary Maker: Clodion (Claude Michel)
Medium: Terracotta, brass, gilt brass, silvered brass, steel and glass
Dimensions: H. (overall): 40 3/4 in. (103.5 cm)
Sculpture: 21 3/8 x 12 3/4 x 8 1/4 in. (54.3 x 32.4 x 21 cm) Globe: diam.: 10 13/16 in. (27.5 cm)



Title: Pocket Watch
Date: ca. 1750
Primary Maker: Julien Le Roy
Medium: Gold and enamel
Dimensions: 2 1/4 x 1 3/4 x 1 3/4 in. (5.8 x 4.5 x 4.4 cm)



Title: Mantel Regulator Clock Showing Mean and Solar Time
Date: 1792
Primary Maker: Robert Robin
Medium: Gilt brass, steel, polychrome enamel and gold on gilt brass and bronze
Dimensions: 16 5/8 x 9 3/8 x 7 5/8 in. (42.2 x 23.8 x 19.4 cm)



Title: Automaton Lion Clock
Date: 1640
Primary Maker: Christoph Miller
Medium: Gilt bronze and ebony on oak
Dimensions: 13 5/16 x 9 1/2 x 6 9/16 in. (33.8 x 24.1 x 16.7 cm)



Title: Double-Dial Desk Watch Showing Decimal and Traditional Time
Date: ca. 1795-after 1807
Primary Maker: Abraham-Louis Breguet
Medium: Gold, enamel, gilt brass, brass, and steel
Dimensions: 2 7/8 x 2 7/8 x 13/16 in. (7.3 x 7.3 x 2 cm)
H.: 15/16 in. (2.4 cm), diam.: 2 7/8 in. (7.3 cm)



Title: Longcase Clock
Date: 1685
Primary Maker: Edward East
Medium: Walnut on oak and mahogany?
Dimensions: 79 1/2 x 16 1/8 x 9 in. (201.9 x 40.9 x 22.9 cm)



Title: Gilt-Brass Drum Table Clock
Date: ca. 1575
Primary Maker: Pierre Auvray
Medium: Gilded brass on brass
Dimensions: 4 1/8 x 5 x 5 in. (10.5 x 12.7 x 12.7 cm)



Title: Gilt Brass Coach Clock-Watch
Date: 1645
Primary Maker: Pierre Norry
Medium: Gilt brass, glass
Dimensions: 6 5/8 x 4 7/8 x 2 1/2 in. (16.8 x 12.3 x 6.4 cm)



Title: Bracket Clock
Date: ca. 1695-97
Primary Maker: George Graham
Medium: Ebony and oak
Dimensions: 11 5/16 x 6 15/16 x 4 13/16 in. (28.7 x 17.7 x 12.3 cm)



Title: Annular Mantel Clock with Figures Emblematic of the Passing of Time
Date: ca. 1770
Primary Maker: French, Eighteenth Century
Medium: Gilt bronze on wood
Dimensions: 21 1/4 x 10 1/2 in. (54 x 26.7 cm)



Title: Mantel Clock
Date: ca. 1770
Primary Maker: Ferdinand Berthoud
Medium: Gilt bronze
Dimensions: 16 1/4 x 26 1/4 x 7 7/8 in. (41.3 x 66.7 x 20 cm)



Title: Mantel Clock with Attributes of Ceres, Venus, and Bacchus
Date: ca. 1790
Primary Maker: French, Last Quarter of the Eighteenth Century
Medium: Case and figures of gilt bronze on white marble plinth
Dimensions: 17 3/4 x 13 3/4 x 6 in. (45.1 x 34.9 x 15.2 cm)



Title: Calendrical and Astronomical Pendant Watch
Date: ca. 1625
Primary Maker: George Smith
Medium: Silver and gilt brass
Dimensions: 2 7/16 x 1 7/16 x 1 in. (6.2 x 3.6 x 2.5 cm)



Title: Pendant Clock
Date: ca. 1620
Primary Maker: Abraham Gribelin
Medium: Silver
Dimensions: 3 1/4 x 1 7/8 x 1 1/8 in. (8.3 x 4.7 x 2.9 cm)



Title: Silver Case Verge Watch
Date: 1643
Primary Maker: Robert Grinkin
Medium: Silver
Dimensions: 2 3/4 x 1 7/8 x 7/8 in. (7 x 4.8 x 2.2 cm)



Title: Gilt-Brass Eight-Day Verge Watch Showing Traditional and Canonical Hours
Date: ca. 1685
Primary Maker: Jean Hubert
Medium: Gilt brass
Dimensions: 3 5/16 x 2 9/16 x 1 3/4 in. (8.4 x 6.5 x 4.5 cm)



Title: Pocket Watch
Date: 1750-55
Primary Maker: François Beeckaert
Medium: Gold and enamel
Dimensions: 2 1/4 x 1 3/4 x 1 3/4 in. (5.7 x 4.4 x 4.4 cm)



Title: Pendant Watch
Date: ca. 1765
Primary Maker: Dutertre
Medium: Gold, gilt brass, enamel, and copper
Dimensions: 2 3/8 x 1 7/8 x 1 in. (6 x 4.8 x 2.5 cm)



Title: Pocket Watch with Tourbillon
Date: ca. 1820
Primary Maker: Abraham-Louis Breguet
Medium: Gold, gilt brass, and steel
Dimensions: 3 1/8 x 2 5/16 x 2 5/8 in. (8 x 5.9 x 6.7 cm)



Title: Table Clock with Astronomical and Calendrical Dials
Date: probably 1653
Primary Maker: David Weber
Medium: Gilt brass and silver
Dimensions: 23 3/8 x 10 1/16 x 9 7/8 in. (59.4 x 25.5 x 25.1 cm)



Title: Barometer Clock
Date: ca. 1690-1700
Primary Maker: André-Charles Boulle
Medium: Ebony, turtle shell, brass, gilt bronze, and enamel
Dimensions: 45 1/4 x 23 1/8 x 10 1/4 in. (114.9 x 58.7 x 26 cm)



Title: Mantel Regulator Clock
Date: ca. 1823
Primary Maker: Charles Mugnier
Medium: Gilt brass, brass and steel on oak and mahogany
Dimensions: 23 3/8 x 13 3/4 x 9 1/4 in. (59.3 x 34.9 x 23.5 cm)



Title: Regulator Clock Showing Mean and Solar Time
Date: 1784
Primary Maker: Robert Robin
Medium: Gilt brass, steel, polychrome enamel and gold on gilt brass and bronze
Dimensions: 16 1/8 x 8 3/4 x 6 13/16 in. (41 x 22.3 x 17.3 cm)



Title: Ebony Bracket Clock
Date: 1685
Primary Maker: Joseph Knibb
Medium: Ebony on oak
Dimensions: 13 3/8 x 9 9/16 x 6 in. (34 x 24.3 x 15.2 cm)



Title: Tower Table Clock
Date: ca. 1580
Primary Maker: German, probably Augsburg
Medium: Gilt brass
Dimensions: 9 3/4 x 7 1/8 x 7 1/8 in. (24.8 x 18.1 x 18.1 cm)



Title: Gilt-Brass Tower Table Clock
Date: ca. 1575
Primary Maker: Hans Koch
Medium: Cast and sheet gilt brass
Dimensions: 7 1/8 x 3 9/16 x 3 9/16 in. (18.1 x 9 x 9 cm)



Title: Clock with Astronomical and Calendrical Dials
Date: 1554
Primary Maker: Veyt Schaufel
Medium: Gilt brass
Dimensions: 12 3/8 x 7 3/8 x 5 3/16 in. (31.4 x 18.8 x 13.2 cm)



Title: Table Clock
Date: ca. 1530
Primary Maker: Pierre de Fobis
Medium: Gilt brass and enamel
Dimensions: 5 x 2 3/4 x 2 3/4 in. (12.8 x 7 x 7 cm)



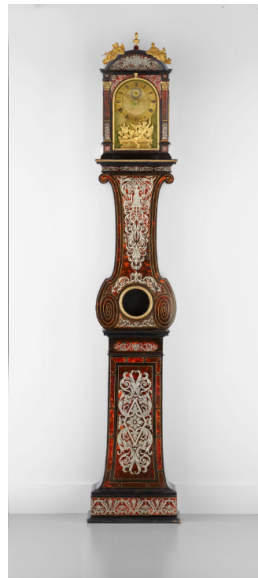
Title: Table Clock
Date: ca. 1565
Primary Maker: Flemish
Medium: Gilt brass
Dimensions: 2 7/16 x 5 3/16 x 5 1/4 in. (6.2 x 13.2 x 13.3 cm)



Title: Altar Clock
Date: ca. 1635
Primary Maker: Hans Bushman
Medium: Ebony and gilt brass
Dimensions: 26 7/8 x 13 3/4 x 7 7/8 in. (68.2 x 34.9 x 20 cm)



Title: Portable Drum Clock
Date: ca. 1550
Primary Maker: German, probably Augsburg
Medium: Gilt brass
Dimensions: H.: 1 1/2 in. (3.8 cm), diam.: 2 3/8 in. (6 cm)



Title: Longcase Clock
Date: ca. 1677
Primary Maker: André-Charles Boulle
Medium: Ebony, turtle shell, and oak
Dimensions: 88 x 15 13/16 x 7 7/8 in. (223.5 x 40.2 x 20 cm)



Title: Mantel Clock with Ivory Twist Pillars
Date: ca. 1675
Primary Maker: André-Charles Boulle
Medium: Ebony, pewter and ivory on oak
Dimensions: 24 x 14 7/8 x 7 1/4 in. (61 x 37.8 x 18.4 cm)



Title: Longcase Clock
Date: ca. 1675–80
Primary Maker: Edward East
Medium: Olive wood and brass on oak, walnut, and burl wood
Dimensions: 79 1/2 × 16 1/8 × 9 in. (201.9 × 41 × 22.9 cm)



Title: Hague Clock
Date: probably ca. 1678–85
Primary Maker: Benjamin Lisle
Medium: Silver, tortoiseshell and ebony on oak, ebony, and tortoiseshell
Dimensions: 14 1/4 × 9 3/4 × 4 7/8 in. (36.2 × 24.8 × 12.4 cm)



Title: Pendulum Wall Clock
Date: ca. 1665
Primary Maker: Nicolas Hanet
Medium: Ebony and bronze on walnut and fruitwood
Dimensions: 16 7/8 × 10 3/4 × 4 5/8 in. (42.9 × 27.3 × 11.7 cm)



Title: Tête de Poupée Clock
Date: ca. 1680–90
Primary Maker: Balthazar Martinot II
Medium: Pewter, turtle shell, brass, oak, and pine
Dimensions: 21 3/8 × 11 1/8 × 6 7/8 in. (54.4 × 28.2 × 17.5 cm)



Title: Carriage Clock with Calendar
Date: 1811
Primary Maker: Abraham-Louis Breguet
Medium: Gilt bronze, silver, and enamel
Dimensions: 4 3/8 × 3 5/16 × 2 7/16 in. (11.1 × 8.4 × 6.2 cm)



Title: Gilt Brass Table Clock with Later Movement
Date: ca. 1550
Primary Maker: French, Sixteenth Century
Medium: Gilt brass
Dimensions: 5 1/4 × 3 1/16 × 2 3/4 in. (13.3 × 7.7 × 7 cm)



Title: Pendant Watch
Date: ca. 1660
Primary Maker: Chavannes le Jeune
Medium: Gold and enamel
Dimensions: 1 7/8 × 1 5/16 × 1 1/4 in. (4.7 × 3.3 × 3.2 cm)



Title: Pocket Watch
Date: 1757
Primary Maker: Thomas Mudge
Medium: Gold and enamel
Dimensions: 2 3/8 × 1 15/16 × 1 3/4 in. (6 × 4.9 × 4.4 cm)



Title: Pendant Watch
Date: ca. 1685
Primary Maker: Henry Arlaud
Medium: Gold and enamel
Dimensions: 2 5/16 × 1 5/8 × 15/16 in. (5.9 × 4.1 × 2.4 cm)



Title: Pendant Watch

Date: ca. 1620

Primary Maker: C. De
Lespée

Medium: Gold, rock crystal,
and enamel

Dimensions: 2 5/8 x 1 9/16
x 1 1/16 in. (6.6 x 3.9 x 2.8
cm)



**Title: Longcase
Regulator Clock**

Date: 1767

Primary Maker: Balthazar
Lieutaud

Medium: Oak veneered
with various woods
including tulipwood,
kingwood, and amaranth;
gilt bronze, enamel, and
marble

Dimensions: 100 x 21 3/4
x 13 5/8 in. (254 x 55.2 x
34.6 cm)