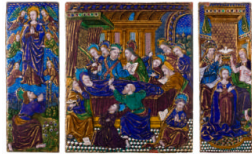


Basic Report



Title: Triptych: The Death of the Virgin with The Assumption and The Coronation

Date: ca. 1520–25

Primary Maker: Nardon Pénicaud

Medium: Painted enamel on copper, partly gilded

Dimensions: Central plaque: 9 1/8 × 7 1/2 in. (23.2 × 19.1 cm) Wings: 9 1/8 × 3 1/4 in.



Title: Double-Tiered Triptych: Scenes from the Passion of Christ

Date: mid-16th century

Primary Maker: Nardon Pénicaud

Medium: Painted enamel on copper, partly gilded

Dimensions: 14 × 16 in. (35.6 × 40.6 cm) Upper central plaque: 5 1/2 × 11 in. (14 × 27.9 cm) Upper wings: 5 3/4 × 4 3/4 in. (14.6 × 12.1 cm) Lower central plaque: 9 7/8 × 11 3/8 in. (25.1 × 28.9 cm) Lower wings: 9 3/4 × 5 in. (24.8 × 12.7 cm)



Title: Triptych: The Way to Calvary; The Crucifixion; The Desposition

Date: ca. 1520–25

Primary Maker: Nardon Pénicaud

Medium: Painted enamel on copper, partly gilded

Dimensions: Central plaque: 10 3/16 × 9 1/2 in. (25.9 × 24.1 cm) Wings: 10 1/2 × 3 3/4 in. (26.7 × 9.5 cm)