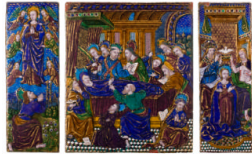


Basic Report



Title: Triptych: The Death of the Virgin with The Assumption and The Coronation
Date: ca. 1520–25
Primary Maker: Nardon Pénicaud
Medium: Painted enamel on copper, partly gilded
Dimensions: Central plaque: 9 1/8 × 7 1/2 in. (23.2 × 19.1 cm) Wings: 9 1/8 × 3 1/4 in.



Title: Double-Tiered Triptych: Scenes from the Passion of Christ
Date: mid-16th century
Primary Maker: Nardon Pénicaud
Medium: Painted enamel on copper, partly gilded
Dimensions: 14 × 16 in. (35.6 × 40.6 cm) Upper central plaque: 5 1/2 × 11 in. (14 × 27.9 cm) Upper wings: 5 3/4 × 4 3/4 in. (14.6 × 12.1 cm) Lower central plaque: 9 7/8 × 11 3/8 in. (25.1 × 28.9 cm) Lower wings: 9 3/4 × 5 in. (24.8 × 12.7 cm)



Title: The Adoration of the Magi
Date: ca. 1510
Primary Maker: Master of the Large Foreheads
Medium: Painted enamel on copper, partly gilded
Dimensions: 10 1/4 × 9 1/8 in. (26 × 23.2 cm)



Title: Triptych: The Way to Calvary; The Crucifixion; The Deposition
Date: ca. 1510
Primary Maker: Master of the Large Foreheads
Medium: Painted enamel on copper, partly gilded
Dimensions: Central plaque: 9 1/4 × 8 1/8 in. (23.5 × 20.6 cm) Wings: 9 1/4 × 3 1/2 in. (23.5 × 8.9 cm)



Title: The Agony in the Garden
Date: ca. 1520–25
Primary Maker: Jean Pénicaud I
Medium: Painted enamel on copper, partly gilded
Dimensions: 10 7/8 × 9 1/2 in. (27.6 × 24.1 cm)



Title: Triptych: Christ Crowned with Thorns with The Kiss of Judas and The Flagellation
Date: ca. 1525–35
Primary Maker: Jean Pénicaud I
Medium: Painted enamel on copper, partly gilded
Dimensions: 21 × 13 3/16 in. (53.3 × 33.5 cm) Central plaque: 10 5/8 × 9 3/8 in. (27 × 23.8 cm) Wings: 10 5/8 × 4 3/16 in. (27 × 10.6 cm)



Title: Martyrdom of a Saint

Date: ca. 1525–35

Primary Maker: Jean Pénicaud I

Medium: Painted enamel on copper, partly gilded

Dimensions: 6 1/2 x 6 1/8 in. (16.5 x 15.6 cm)



Title: The Seven Sorrows of the Virgin

Date: 1533

Primary Maker: Pierre Reymond

Medium: Painted enamel on copper, partly gilded

Dimensions: 7 1/8 x 5 3/4 in. (18.1 x 14.6 cm)



Title: Triptych: The Lineage of St. Anne

Date: 19th century (?)

Primary Maker: Jean II Pénicaud

Medium: Enamel on copper

Dimensions: Central Plaque: 11 3/4 x 7 1/2 in. (29.8 x 19.1 cm); wings: 11 3/4 x 3 1/8 in. (29.8 x 7.9 cm)



Title: Ewer: The Trojan Horse; A Cavalry Combat

Date: late 16th–early 17th century

Primary Maker: Jean III Pénicaud

Medium: Enamel on copper

Dimensions: 11 1/4 x 5 3/8 x 4 1/4 in. (28.6 x 13.7 x 10.8 cm)



Title: Casket: Putti and Mottoes of Courtly Love

Date: ca. 1545

Primary Maker: Colin Nouailher

Medium: Painted enamel on copper, partly gilded

Dimensions: 4 3/4 x 7 1/4 x 4 3/4 in. (12.1 x 18.4 x 12.1 cm)



Title: Casket: Heads of the Caesars within Wreaths

Date: ca. 1545

Primary Maker: Colin Nouailher

Medium: Enamel on copper with gilt-metal frame

Dimensions: 4 3/16 x 6 3/4 x 4 7/16 in. (10.6 x 17.1 x 11.3 cm)



Title: Portrait of a Man

Date: 1542

Primary Maker: Léonard Limosin (or Limousin)

Medium: Enamel on copper

Dimensions: 5 x 4 1/4 in. (12.7 x 10.8 cm)



Title: Portrait of a Man (Guillaume Farel?)

Date: 1546

Primary Maker: Léonard Limosin (or Limousin)

Medium: Enamel on copper

Dimensions: 7 9/16 x 5 5/8 in. (19.2 x 14.3 cm)



Title: Portrait of a Man (Antoine de Bourbon?)

Date: ca. 1560

Primary Maker: Léonard Limosin (or Limousin)

Medium: Enamel on copper

Dimensions: 5 1/8 x 4 1/2 in. (13 x 11.4 cm)



Title: Odet de Coligny, Cardinal de Chatillon (1515–1571)

Date: ca. 1555

Primary Maker: Léonard Limosin (or Limousin)

Medium: Enamel on copper
Dimensions: 7 1/2 × 5 1/4 in. (19 × 13.4 cm)



Title: Guy Chabot, Baron de Jarnac

Date: 1540–45

Primary Maker: Léonard Limosin (or Limousin)

Medium: Enamel on copper
Dimensions: 9 3/8 × 7 1/16 in. (23.8 × 17.9 cm)



Title: Louise de Pisseleu, Madame de Jarnac

Date: late 16th century or later

Primary Maker: Léonard Limosin (or Limousin)

Medium: Enamel on copper
Dimensions: 9 3/8 × 7 1/16 in. (23.8 × 17.9 cm)

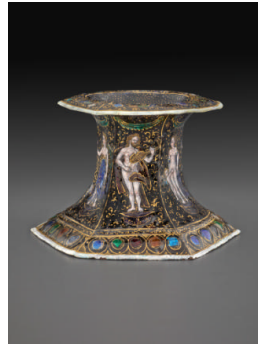


Title: The Triumph of the Eucharist and the Catholic Faith

Date: 1561–62

Primary Maker: Léonard Limosin (or Limousin)

Medium: Painted enamel on copper, partly gilt
Dimensions: 7 3/4 × 10 in. (19.7 × 25.4 cm)



Title: Saltcellar: Olympian Deities

Date: early 17th century

Primary Maker: Jean II Limousin

Medium: Enamel on copper
Dimensions: H: 3 3/4 in. (9.5 cm)



Title: Casket: Old Testament Subjects

Date: mid-16th century, with later additions

Primary Maker: Pierre Reymond

Medium: Painted enamel on copper, partly gilded, and gilt brass
Dimensions: 4 1/2 × 6 1/2 × 4 1/2 in. (11.4 × 16.5 × 11.4 cm)

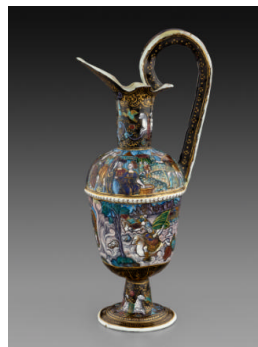


Title: Ewer Stand: Moses Striking the Rock

Date: late 16th century

Primary Maker: Pierre Reymond

Medium: Painted enamel on copper, partly gilded
Dimensions: H.: 1 1/2 in. (3.8 cm), diam.: 18 in. (45.7 cm)



Title: Ewer: The Gathering of Manna; The Destruction of Pharaoh's Host

Date: late 16th century

Primary Maker: Pierre Reymond

Medium: Painted enamel on copper, partly gilded
Dimensions: 13 × 6 × 4 in. (33 × 15.2 × 10.2 cm)



Title: Saltcellar: Amorini and Satyrs

Date: mid-16th century

Primary Maker: Pierre Reymond

Medium: Painted enamel on copper, partly gilded
Dimensions: H.: 5 9/16 in. (14.1 cm), diam.: 3 1/2 in. (8.9 cm)



Title: The Adoration of the Magi

Date: late 16th century

Primary Maker: Jean Reymond

Medium: Painted enamel on copper, partly gilded

Dimensions: 11 7/8 x 9 1/2 in. (30.2 x 24.1 cm)



Title: Oval Dish: Apollo and the Muses; Fame

Date: late 16th century

Primary Maker: Martial Reymond

Medium: Painted enamel on copper, partly gilded

Dimensions: 21 7/16 x 16 x 2 in. (54.5 x 40.6 x 5.1 cm)



Title: Oval Plate: Ceres Holding a Torch; Minerva

Date: late 16th century

Primary Maker: Martial Reymond

Medium: Enamel on copper
Dimensions: 14 1/2 x 10 9/16 in. (36.8 x 26.8 cm)



Title: Oval Dish: Jupiter

Date: late 16th century

Primary Maker: Jean Reymond

Medium: Painted enamel on copper, partly gilded

Dimensions: 20 3/8 x 16 x 2 in. (51.8 x 40.6 x 5.1 cm)



Title: Casket: Scenes from the Story of Joseph

Date: late 16th century

Primary Maker: Pierre Courteys

Medium: Painted enamel on copper, partly gilded

Dimensions: 9 3/8 x 10 5/8 x 6 3/4 in. (23.8 x 27 x 17.1 cm)



Title: Casket: Old Testament Subjects

Date: mid-16th century

Primary Maker: Pierre Courteys

Medium: Enamel on copper with gilt-metal frame

Dimensions: 8 5/16 x 9 13/16 x 6 1/4 in. (21.1 x 24.9 x 15.9 cm)



Title: Adoration of the Shepherds

Date: late 16th or early 17th century

Primary Maker: Master IDC

Medium: Painted enamel on copper, partly gilded

Dimensions: 17 1/2 x 13 7/16 in. (44.5 x 34.1 cm)



Title: Ewer: Triumph of Bacchus; Triumph of Diana

Date: late 16th century

Primary Maker: Master I.C.

Medium: Painted enamel on copper, partly gilded

Dimensions: 11 1/8 x 6 3/4 x 5 in. (28.3 x 17.1 x 12.7 cm)



Title: Saltcellar in Baluster Form: Bacchic Procession; Putti and Satyrs

Date: late 16th century

Primary Maker: Master I.C.

Medium: Enamel on copper
Dimensions: 5 1/8 in. (13 cm)



Title: Cup: Moses Striking the Rock
Date: late 16th century
Primary Maker: Master I.C.
Medium: Painted enamel on copper, partly gilded
Dimensions: H.: 4 5/8 in. (11.7 cm), diam.: 10 in. (25.4 cm)



Title: Cup: Lot and His Daughters
Date: late 16th century
Primary Maker: Master I.C.
Medium: Painted enamel on copper, partly gilded
Dimensions: H.: 4 3/8 in. (11.1 cm), diam.: 9 7/8 in. (25.1 cm)



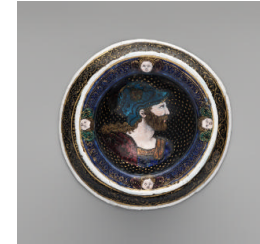
Title: Pair of Saltcellars: The Story of Minos and Scylla, and Allegorical Figures
Date: early 17th century
Primary Maker: Jean Guibert
Medium: Painted enamel on copper, partly gilded
Dimensions: H.: 4 3/8 in. (11.1 cm), diam.: 6 in. (15.2 cm)



Title: Pair of Saltcellars: The Story of Minos and Scylla, and Allegorical Figures
Date: early 17th century
Primary Maker: Jean Guibert
Medium: Painted enamel on copper, partly gilded
Dimensions: H.: 4 3/8 in. (11.1 cm), diam.: 6 in. (15.2 cm)



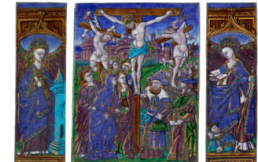
Title: Ninus, King of Nineveh
Date: early 17th century or later
Primary Maker: Jean II Limousin
Medium: Enamel on copper
Dimensions: 8 3/16 x 5 5/8 in. (20.8 x 14.3 cm)



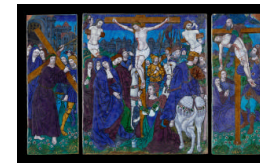
Title: Pair of Saltcellars: Scenes from the Story of Orpheus
Date: late 16th or early 17th century
Primary Maker: Suzanne de Court
Medium: Painted enamel on copper, partly gilded
Dimensions: H.: 3 1/2 in. (8.9 cm), diam.: 3 9/16 in. (9 cm)



Title: Pair of Saltcellars: Scenes from the Story of Orpheus
Date: late 16th or early 17th century
Primary Maker: Suzanne de Court
Medium: Painted enamel on copper, partly gilded
Dimensions: H.: 3 1/2 in. (8.9 cm), diam.: 3 9/16 in. (9 cm)



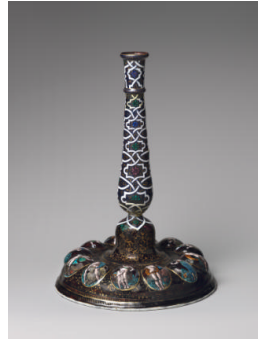
Title: Triptych: The Crucifixion; Saint Barbara; Saint Catherine of Alexandria
Date: ca. 1500
Primary Maker: Master of the Orléans Triptych
Medium: Painted enamel on copper, partly gilded
Dimensions: 16 1/4 x 8 7/8 in. (41.3 x 22.5 cm) Central plaque: 8 x 6 3/8 in. (20.3 x 16.2 cm) Wings: 8 1/8 x 2 5/8 in. (20.6 x 6.7 cm)



Title: Triptych: The Way to Calvary; The Crucifixion; The Deposition
Date: ca. 1520–25
Primary Maker: Nardon Pénicaud
Medium: Painted enamel on copper, partly gilded
Dimensions: Central plaque: 10 3/16 x 9 1/2 in. (25.9 x 24.1 cm) Wings: 10 1/2 x 3 3/4 in. (26.7 x 9.5 cm)



Title: Triptych: The Way to Calvary; The Crucifixion; Pietà
Date: ca. 1525–35
Primary Maker: Jean Pénicaud I
Medium: Painted enamel on copper, partly gilded
Dimensions: 10 x 12 7/16 in. (25.4 x 31.6 cm) Central plaque: 10 3/16 x 8 3/4 in. (25.9 x 22.2 cm) Wings: 10 1/4 x 3 3/4 in. (26 x 9.5 cm)



Title: Candlestick: Olympian Deities and the Labors of Hercules
Date: late 16th century
Primary Maker: Master I.C.
Medium: Painted enamel on copper, partly gilded
Dimensions: H.: 11 3/4 in. (29.8 cm), diam.: 8 1/2 in. (21.6 cm)



Title: Plaque: The Agony in the Garden
Date: mid- to late 16th century
Primary Maker: Pierre Reymond
Medium: Painted enamel on copper, partly gilded
Dimensions: Plaque: 8 x 6 1/4 in. (20.3 x 15.9 cm) Roundels: diam. 2 1/16 in. (5.2 cm)



Title: Plaque: Christ Crowned with Thorns
Date: mid- to late 16th century
Primary Maker: Pierre Reymond
Medium: Painted enamel on copper, partly gilded
Dimensions: Plaque: 8 x 6 1/4 in. (20.3 x 15.9 cm) Roundels: diam. 2 1/16 in. (5.2 cm)