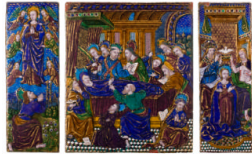


# Basic Report

---



**Title:** Triptych: The Death of the Virgin with The Assumption and The Coronation  
**Date:** ca. 1520–25  
**Primary Maker:** Nardon Pénicaud  
**Medium:** Painted enamel on copper, partly gilded  
**Dimensions:** Central plaque: 9 1/8 × 7 1/2 in. (23.2 × 19.1 cm) Wings: 9 1/8 × 3 1/4 in.



**Title:** Double-Tiered Triptych: Scenes from the Passion of Christ  
**Date:** mid-16th century  
**Primary Maker:** Nardon Pénicaud  
**Medium:** Painted enamel on copper, partly gilded  
**Dimensions:** 14 × 16 in. (35.6 × 40.6 cm) Upper central plaque: 5 1/2 × 11 in. (14 × 27.9 cm) Upper wings: 5 3/4 × 4 3/4 in. (14.6 × 12.1 cm) Lower central plaque: 9 7/8 × 11 3/8 in. (25.1 × 28.9 cm) Lower wings: 9 3/4 × 5 in. (24.8 × 12.7 cm)



**Title:** The Adoration of the Magi  
**Date:** ca. 1510  
**Primary Maker:** Master of the Large Foreheads  
**Medium:** Painted enamel on copper, partly gilded  
**Dimensions:** 10 1/4 × 9 1/8 in. (26 × 23.2 cm)



**Title:** Triptych: The Way to Calvary; The Crucifixion; The Deposition  
**Date:** ca. 1510  
**Primary Maker:** Master of the Large Foreheads  
**Medium:** Painted enamel on copper, partly gilded  
**Dimensions:** Central plaque: 9 1/4 × 8 1/8 in. (23.5 × 20.6 cm) Wings: 9 1/4 × 3 1/2 in. (23.5 × 8.9 cm)



**Title:** The Agony in the Garden  
**Date:** ca. 1520–25  
**Primary Maker:** Jean Pénicaud I  
**Medium:** Painted enamel on copper, partly gilded  
**Dimensions:** 10 7/8 × 9 1/2 in. (27.6 × 24.1 cm)



**Title:** Triptych: Christ Crowned with Thorns with The Kiss of Judas and The Flagellation  
**Date:** ca. 1525–35  
**Primary Maker:** Jean Pénicaud I  
**Medium:** Painted enamel on copper, partly gilded  
**Dimensions:** 21 × 13 3/16 in. (53.3 × 33.5 cm) Central plaque: 10 5/8 × 9 3/8 in. (27 × 23.8 cm) Wings: 10 5/8 × 4 3/16 in. (27 × 10.6 cm)



**Title:** Martyrdom of a Saint

**Date:** ca. 1525–35

**Primary Maker:** Jean Pénicaud I

**Medium:** Painted enamel on copper, partly gilded

**Dimensions:** 6 1/2 x 6 1/8 in. (16.5 x 15.6 cm)



**Title:** The Seven Sorrows of the Virgin

**Date:** 1533

**Primary Maker:** Pierre Reymond

**Medium:** Painted enamel on copper, partly gilded

**Dimensions:** 7 1/8 x 5 3/4 in. (18.1 x 14.6 cm)



**Title:** Triptych: The Lineage of St. Anne

**Date:** 19th century (?)

**Primary Maker:** Jean II Pénicaud

**Medium:** Enamel on copper

**Dimensions:** Central Plaque: 11 3/4 x 7 1/2 in. (29.8 x 19.1 cm); wings: 11 3/4 x 3 1/8 in. (29.8 x 7.9 cm)



**Title:** Ewer: The Trojan Horse; A Cavalry Combat

**Date:** late 16th–early 17th century

**Primary Maker:** Jean III Pénicaud

**Medium:** Enamel on copper

**Dimensions:** 11 1/4 x 5 3/8 x 4 1/4 in. (28.6 x 13.7 x 10.8 cm)



**Title:** Casket: Putti and Mottoes of Courtly Love

**Date:** ca. 1545

**Primary Maker:** Colin Nouailher

**Medium:** Painted enamel on copper, partly gilded

**Dimensions:** 4 3/4 x 7 1/4 x 4 3/4 in. (12.1 x 18.4 x 12.1 cm)



**Title:** Casket: Heads of the Caesars within Wreaths

**Date:** ca. 1545

**Primary Maker:** Colin Nouailher

**Medium:** Enamel on copper with gilt-metal frame

**Dimensions:** 4 3/16 x 6 3/4 x 4 7/16 in. (10.6 x 17.1 x 11.3 cm)



**Title:** Portrait of a Man

**Date:** 1542

**Primary Maker:** Léonard Limosin (or Limousin)

**Medium:** Enamel on copper

**Dimensions:** 5 x 4 1/4 in. (12.7 x 10.8 cm)



**Title:** Portrait of a Man (Guillaume Farel?)

**Date:** 1546

**Primary Maker:** Léonard Limosin (or Limousin)

**Medium:** Enamel on copper

**Dimensions:** 7 9/16 x 5 5/8 in. (19.2 x 14.3 cm)



**Title:** Portrait of a Man (Antoine de Bourbon?)

**Date:** ca. 1560

**Primary Maker:** Léonard Limosin (or Limousin)

**Medium:** Enamel on copper

**Dimensions:** 5 1/8 x 4 1/2 in. (13 x 11.4 cm)



**Title:** Odet de Coligny, Cardinal de Chatillon (1515-1571)

**Date:** ca. 1555

**Primary Maker:** Léonard Limosin (or Limousin)

**Medium:** Enamel on copper  
**Dimensions:** 7 1/2 × 5 1/4 in. (19 × 13.4 cm)



**Title:** Guy Chabot, Baron de Jarnac

**Date:** 1540-45

**Primary Maker:** Léonard Limosin (or Limousin)

**Medium:** Enamel on copper  
**Dimensions:** 9 3/8 × 7 1/16 in. (23.8 × 17.9 cm)



**Title:** Louise de Pisseleu, Madame de Jarnac

**Date:** late 16th century or later

**Primary Maker:** Léonard Limosin (or Limousin)

**Medium:** Enamel on copper  
**Dimensions:** 9 3/8 × 7 1/16 in. (23.8 × 17.9 cm)

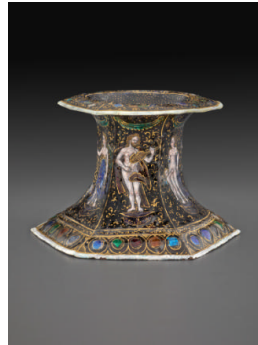


**Title:** The Triumph of the Eucharist and the Catholic Faith

**Date:** 1561-62

**Primary Maker:** Léonard Limosin (or Limousin)

**Medium:** Painted enamel on copper, partly gilt  
**Dimensions:** 7 3/4 × 10 in. (19.7 × 25.4 cm)



**Title:** Saltcellar: Olympian Deities

**Date:** early 17th century

**Primary Maker:** Jean II Limousin

**Medium:** Enamel on copper  
**Dimensions:** H: 3 3/4 in. (9.5 cm)



**Title:** Casket: Old Testament Subjects

**Date:** mid-16th century, with later additions

**Primary Maker:** Pierre Reymond

**Medium:** Painted enamel on copper, partly gilded, and gilt brass  
**Dimensions:** 4 1/2 × 6 1/2 × 4 1/2 in. (11.4 × 16.5 × 11.4 cm)

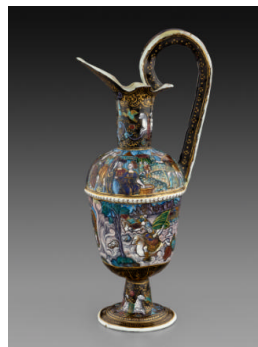


**Title:** Ewer Stand: Moses Striking the Rock

**Date:** late 16th century

**Primary Maker:** Pierre Reymond

**Medium:** Painted enamel on copper, partly gilded  
**Dimensions:** H.: 1 1/2 in. (3.8 cm), diam.: 18 in. (45.7 cm)



**Title:** Ewer: The Gathering of Manna; The Destruction of Pharaoh's Host

**Date:** late 16th century

**Primary Maker:** Pierre Reymond

**Medium:** Painted enamel on copper, partly gilded  
**Dimensions:** 13 × 6 × 4 in. (33 × 15.2 × 10.2 cm)



**Title:** Saltcellar: Amorini and Satyrs

**Date:** mid-16th century

**Primary Maker:** Pierre Reymond

**Medium:** Painted enamel on copper, partly gilded  
**Dimensions:** H.: 5 9/16 in. (14.1 cm), diam.: 3 1/2 in. (8.9 cm)



**Title: The Adoration of the Magi**

**Date:** late 16th century

**Primary Maker:** Jean Reymond

**Medium:** Painted enamel on copper, partly gilded

**Dimensions:** 11 7/8 x 9 1/2 in. (30.2 x 24.1 cm)



**Title: Oval Dish: Apollo and the Muses; Fame**

**Date:** late 16th century

**Primary Maker:** Martial Reymond

**Medium:** Painted enamel on copper, partly gilded

**Dimensions:** 21 7/16 x 16 x 2 in. (54.5 x 40.6 x 5.1 cm)



**Title: Oval Plate: Ceres Holding a Torch; Minerva**

**Date:** late 16th century

**Primary Maker:** Martial Reymond

**Medium:** Enamel on copper  
**Dimensions:** 14 1/2 x 10 9/16 in. (36.8 x 26.8 cm)



**Title: Oval Dish: Jupiter**

**Date:** late 16th century

**Primary Maker:** Jean Reymond

**Medium:** Painted enamel on copper, partly gilded

**Dimensions:** 20 3/8 x 16 x 2 in. (51.8 x 40.6 x 5.1 cm)



**Title: Casket: Scenes from the Story of Joseph**

**Date:** late 16th century

**Primary Maker:** Pierre Courteys

**Medium:** Painted enamel on copper, partly gilded

**Dimensions:** 9 3/8 x 10 5/8 x 6 3/4 in. (23.8 x 27 x 17.1 cm)



**Title: Casket: Old Testament Subjects**

**Date:** mid-16th century

**Primary Maker:** Pierre Courteys

**Medium:** Enamel on copper with gilt-metal frame

**Dimensions:** 8 5/16 x 9 13/16 x 6 1/4 in. (21.1 x 24.9 x 15.9 cm)



**Title: Adoration of the Shepherds**

**Date:** late 16th or early 17th century

**Primary Maker:** Master IDC

**Medium:** Painted enamel on copper, partly gilded

**Dimensions:** 17 1/2 x 13 7/16 in. (44.5 x 34.1 cm)



**Title: Ewer: Triumph of Bacchus; Triumph of Diana**

**Date:** late 16th century

**Primary Maker:** Master I.C.

**Medium:** Painted enamel on copper, partly gilded

**Dimensions:** 11 1/8 x 6 3/4 x 5 in. (28.3 x 17.1 x 12.7 cm)



**Title: Saltcellar in Baluster Form: Bacchic Procession; Putti and Satyrs**

**Date:** late 16th century

**Primary Maker:** Master I.C.

**Medium:** Enamel on copper  
**Dimensions:** 5 1/8 in. (13 cm)



**Title:** Cup: Moses Striking the Rock  
**Date:** late 16th century  
**Primary Maker:** Master I.C.  
**Medium:** Painted enamel on copper, partly gilded  
**Dimensions:** H.: 4 5/8 in. (11.7 cm), diam.: 10 in. (25.4 cm)



**Title:** Cup: Lot and His Daughters  
**Date:** late 16th century  
**Primary Maker:** Master I.C.  
**Medium:** Painted enamel on copper, partly gilded  
**Dimensions:** H.: 4 3/8 in. (11.1 cm), diam.: 9 7/8 in. (25.1 cm)



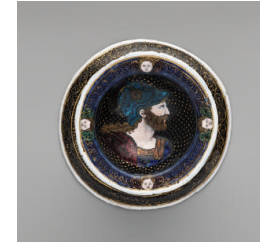
**Title:** Pair of Saltcellars: The Story of Minos and Scylla, and Allegorical Figures  
**Date:** early 17th century  
**Primary Maker:** Jean Guibert  
**Medium:** Painted enamel on copper, partly gilded  
**Dimensions:** H.: 4 3/8 in. (11.1 cm), diam.: 6 in. (15.2 cm)



**Title:** Pair of Saltcellars: The Story of Minos and Scylla, and Allegorical Figures  
**Date:** early 17th century  
**Primary Maker:** Jean Guibert  
**Medium:** Painted enamel on copper, partly gilded  
**Dimensions:** H.: 4 3/8 in. (11.1 cm), diam.: 6 in. (15.2 cm)



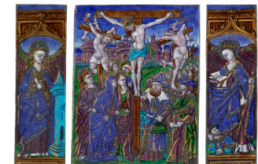
**Title:** Ninus, King of Nineveh  
**Date:** early 17th century or later  
**Primary Maker:** Jean II Limousin  
**Medium:** Enamel on copper  
**Dimensions:** 8 3/16 × 5 5/8 in. (20.8 × 14.3 cm)



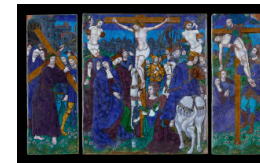
**Title:** Pair of Saltcellars: Scenes from the Story of Orpheus  
**Date:** late 16th or early 17th century  
**Primary Maker:** Suzanne de Court  
**Medium:** Painted enamel on copper, partly gilded  
**Dimensions:** H.: 3 1/2 in. (8.9 cm), diam.: 3 9/16 in. (9 cm)



**Title:** Pair of Saltcellars: Scenes from the Story of Orpheus  
**Date:** late 16th or early 17th century  
**Primary Maker:** Suzanne de Court  
**Medium:** Painted enamel on copper, partly gilded  
**Dimensions:** H.: 3 1/2 in. (8.9 cm), diam.: 3 9/16 in. (9 cm)



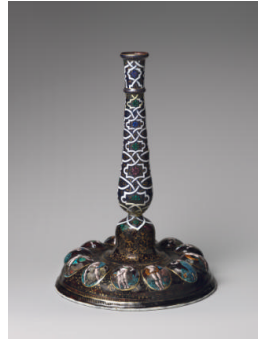
**Title:** Triptych: The Crucifixion; Saint Barbara; Saint Catherine of Alexandria  
**Date:** ca. 1500  
**Primary Maker:** Master of the Orléans Triptych  
**Medium:** Painted enamel on copper, partly gilded  
**Dimensions:** 16 1/4 × 8 7/8 in. (41.3 × 22.5 cm) Central plaque: 8 × 6 3/8 in. (20.3 × 16.2 cm) Wings: 8 1/8 × 2 5/8 in. (20.6 × 6.7 cm)



**Title:** Triptych: The Way to Calvary; The Crucifixion; The Deposition  
**Date:** ca. 1520–25  
**Primary Maker:** Nardon Pénicaud  
**Medium:** Painted enamel on copper, partly gilded  
**Dimensions:** Central plaque: 10 3/16 × 9 1/2 in. (25.9 × 24.1 cm) Wings: 10 1/2 × 3 3/4 in. (26.7 × 9.5 cm)



**Title:** Triptych: The Way to Calvary; The Crucifixion; Pietà  
**Date:** ca. 1525–35  
**Primary Maker:** Jean Pénicaud I  
**Medium:** Painted enamel on copper, partly gilded  
**Dimensions:** 10 x 12 7/16 in. (25.4 x 31.6 cm) Central plaque: 10 3/16 x 8 3/4 in. (25.9 x 22.2 cm) Wings: 10 1/4 x 3 3/4 in. (26 x 9.5 cm)



**Title:** Candlestick: Olympian Deities and the Labors of Hercules  
**Date:** late 16th century  
**Primary Maker:** Master I.C.  
**Medium:** Painted enamel on copper, partly gilded  
**Dimensions:** H.: 11 3/4 in. (29.8 cm), diam.: 8 1/2 in. (21.6 cm)



**Title:** Plaque: The Agony in the Garden  
**Date:** mid- to late 16th century  
**Primary Maker:** Pierre Reymond  
**Medium:** Painted enamel on copper, partly gilded  
**Dimensions:** Plaque: 8 x 6 1/4 in. (20.3 x 15.9 cm) Roundels: diam. 2 1/16 in. (5.2 cm)



**Title:** Plaque: Christ Crowned with Thorns  
**Date:** mid- to late 16th century  
**Primary Maker:** Pierre Reymond  
**Medium:** Painted enamel on copper, partly gilded  
**Dimensions:** Plaque: 8 x 6 1/4 in. (20.3 x 15.9 cm) Roundels: diam. 2 1/16 in. (5.2 cm)