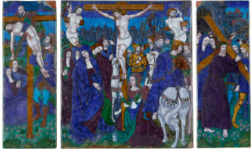


Basic Report



Title: Triptych: The Way to Calvary; The Crucifixion; The Desposition

Date: ca. 1520–25

Primary Maker: Nardon Pénicaud

Medium: Painted enamel on copper, partly gilded

Dimensions: Central plaque: 10 3/16 × 9 1/2 in. (25.9 × 24.1 cm) Wings: 10 1/2 × 3 3/4 in. (26.7 × 9.5 cm)