

# Basic Report



**Title:** Double-Tiered Triptych: Scenes from the Passion of Christ  
**Date:** mid-16th century  
**Primary Maker:** Nardon Pénicaud  
**Medium:** Painted enamel on copper, partly gilded  
**Dimensions:** 14 x 16 in. (35.6 x 40.6 cm) Upper central plaque: 5 1/2 x 11 in. (14 x 27.9 cm) Upper wings: 5 3/4 x 4 3/4 in. (14.6 x 12.1 cm) Lower central plaque: 9 7/8 x 11 3/8 in. (25.1 x 28.9 cm) Lower wings: 9 3/4 x 5 in. (24.8 x 12.7 cm)



**Title:** The Adoration of the Magi  
**Date:** ca. 1510  
**Primary Maker:** Master of the Large Foreheads  
**Medium:** Painted enamel on copper, partly gilded  
**Dimensions:** 10 1/4 x 9 1/8 in. (26 x 23.2 cm)



**Title:** Triptych: Christ Crowned with Thorns with The Kiss of Judas and The Flagellation  
**Date:** ca. 1525–35  
**Primary Maker:** Jean Pénicaud I  
**Medium:** Painted enamel on copper, partly gilded  
**Dimensions:** 21 x 13 3/16 in. (53.3 x 33.5 cm) Central plaque: 10 5/8 x 9 3/8 in. (27 x 23.8 cm) Wings: 10 5/8 x 4 3/16 in. (27 x 10.6 cm)



**Title:** Portrait of a Man (Antoine de Bourbon?)  
**Date:** ca. 1560  
**Primary Maker:** Léonard Limosin (or Limousin)  
**Medium:** Enamel on copper  
**Dimensions:** 5 1/8 x 4 1/2 in. (13 x 11.4 cm)



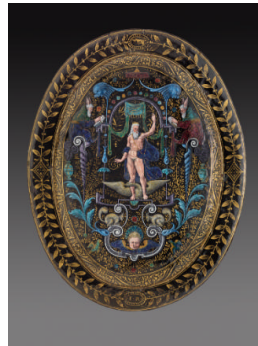
**Title:** The Triumph of the Eucharist and the Catholic Faith  
**Date:** 1561–62  
**Primary Maker:** Léonard Limosin (or Limousin)  
**Medium:** Painted enamel on copper, partly gilt  
**Dimensions:** 7 3/4 x 10 in. (19.7 x 25.4 cm)



**Title:** The Adoration of the Magi  
**Date:** late 16th century  
**Primary Maker:** Jean Reymond  
**Medium:** Painted enamel on copper, partly gilded  
**Dimensions:** 11 7/8 x 9 1/2 in. (30.2 x 24.1 cm)



**Title:** Oval Dish: Apollo and the Muses; Fame  
**Date:** late 16th century  
**Primary Maker:** Martial Reymond  
**Medium:** Painted enamel on copper, partly gilded  
**Dimensions:** 21 7/16 × 16 × 2 in. (54.5 × 40.6 × 5.1 cm)



**Title:** Oval Dish: Jupiter  
**Date:** late 16th century  
**Primary Maker:** Jean Reymond  
**Medium:** Painted enamel on copper, partly gilded  
**Dimensions:** 20 3/8 × 16 × 2 in. (51.8 × 40.6 × 5.1 cm)



**Title:** Casket: Scenes from the Story of Joseph  
**Date:** late 16th century  
**Primary Maker:** Pierre Courteys  
**Medium:** Painted enamel on copper, partly gilded  
**Dimensions:** 9 3/8 × 10 5/8 × 6 3/4 in. (23.8 × 27 × 17.1 cm)



**Title:** Adoration of the Shepherds  
**Date:** late 16th or early 17th century  
**Primary Maker:** Master IDC  
**Medium:** Painted enamel on copper, partly gilded  
**Dimensions:** 17 1/2 × 13 7/16 in. (44.5 × 34.1 cm)



**Title:** Cup: Lot and His Daughters  
**Date:** late 16th century  
**Primary Maker:** Master I.C.  
**Medium:** Painted enamel on copper, partly gilded  
**Dimensions:** H.: 4 3/8 in. (11.1 cm), diam.: 9 7/8 in. (25.1 cm)



**Title:** Pair of Saltcellars: The Story of Minos and Scylla, and Allegorical Figures  
**Date:** early 17th century  
**Primary Maker:** Jean Guibert  
**Medium:** Painted enamel on copper, partly gilded  
**Dimensions:** H.: 4 3/8 in. (11.1 cm), diam.: 6 in. (15.2 cm)



**Title:** Pair of Saltcellars: Scenes from the Story of Orpheus  
**Date:** late 16th or early 17th century  
**Primary Maker:** Suzanne de Court  
**Medium:** Painted enamel on copper, partly gilded  
**Dimensions:** H.: 3 1/2 in. (8.9 cm), diam.: 3 9/16 in. (9 cm)



**Title:** Plaque: Christ Crowned with Thorns  
**Date:** mid- to late 16th century  
**Primary Maker:** Pierre Reymond  
**Medium:** Painted enamel on copper, partly gilded  
**Dimensions:** Plaque: 8 × 6 1/4 in. (20.3 × 15.9 cm)  
 Roundels: diam. 2 1/16 in. (5.2 cm)