

Basic Report



Title: Study of a Woman Facing Left, possibly Ann Ford (Later Mrs. Philip Thicknesse)
Date: ca. 1760
Primary Maker: Thomas Gainsborough
Medium: Black chalk (with evidence in places of chalk dipped in oil) and pencil on buff laid paper
Dimensions: 15 5/8 x 10 3/8 in. (39.7 x 26.4 cm)



Title: Study of a Woman Facing Right, Possibly Ann Ford (Later Mrs. Philip Thicknesse)
Date: ca. 1760
Primary Maker: Thomas Gainsborough
Medium: Black chalk (with evidence of chalk dipped in oil) and pencil on buff laid paper
Dimensions: 14 1/8 x 10 3/8 in. (35.9 x 26.4 cm)



Title: Landscape with Cattle Crossing a Bridge
Date: ca. 1785
Primary Maker: Thomas Gainsborough
Medium: Oil over black chalk with white chalk highlights on white laid paper
Dimensions: 8 5/8 x 12 5/16 in. (21.9 x 31.3 cm)



Title: Farmyard with Tree and Figures
Date: ca. 1653
Primary Maker: Pieter de With
Medium: Pen with brown ink, gray wash applied by brush on paper
Dimensions: 4 7/8 x 10 1/8 in. (12.4 x 25.7 cm)



Title: Landscape with Cottage, Trees, and Stream
Date: ca. 1650
Primary Maker: Rembrandt Harmensz. van Rijn
Medium: Pen with brown ink, brown and gray wash applied by brush on paper
Dimensions: 6 5/16 x 9 1/16 in. (16 x 23 cm)



Title: Isaac Blessing Jacob
Date: ca. 1660
Primary Maker: Rembrandt Harmensz. van Rijn
Medium: Pen with brown ink, brown and gray wash applied by brush on paper with traces of white heightening
Dimensions: 6 3/4 x 8 3/4 in. (17.2 x 22.2 cm)



Title: Portrait of Adelaide Frick-Blanchard
Date: 1880
Primary Maker: Elizabeth Shoumatoff
Medium: Watercolor
Dimensions: 30 1/8 x 23 7/8 in. (76.5 x 60.6 cm)



Title: Portrait of Henry Clay Frick
Date: 1880
Primary Maker: Elizabeth Shoumatoff
Medium: Watercolor
Dimensions: 32 x 26 in. (81.3 x 66 cm)



Title: The Bridge
Date: Late 19th century
Primary Maker: Jacobus Hendrikus Maris
Medium: Etching, printed in black ink on cream-colored wove paper
Dimensions: Image: 3 3/8 x 7 7/8 in. (8.6 x 20 cm)
Sheet: 9 3/4 x 13 1/2 in. (24.8 x 34.3 cm)



Title: Adam and Eve
Date: 1504
Primary Maker: Albrecht Dürer
Medium: Engraving
Dimensions: 9 7/8 x 7 11/16 in. (25.1 x 19.5 cm)



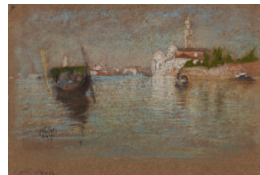
Title: Landscape with Three Trees
Date: 1643
Primary Maker: Rembrandt Harmensz. van Rijn
Medium: Etching, drypoint and engraving in black ink on antique European laid paper
Dimensions: 8 3/8 x 11 in. (21.3 x 27.9 cm)



Title: The Goldweiger's Field
Date: 1651
Primary Maker: Rembrandt Harmensz. van Rijn
Medium: Etching and drypoint, in black ink on European antique laid paper
Dimensions: 4 3/4 x 12 9/16 in. (12.1 x 31.9 cm)



Title: Nocturne: Venice
Date: 1880
Primary Maker: James McNeill Whistler
Medium: Pastel on dark brown wove paper
Dimensions: 8 x 11 7/8 in. (20.3 x 30.2 cm)



Title: The Cemetery: Venice
Date: 1879
Primary Maker: James McNeill Whistler
Medium: Pastel, over traces of underdrawing in graphite on dark brown wove paper
Dimensions: 8 x 11 7/8 in. (20.3 x 30.1 cm)



Title: Venetian Canal
Date: 1880
Primary Maker: James McNeill Whistler
Medium: Black chalk and pastel on dark brown wove paper
Dimensions: 11 7/8 x 8 1/16 in. (30.1 x 20.5 cm)



Title: The First Venice
Set: Little Venice
Date: 1880
Primary Maker: James McNeill Whistler
Medium: Etching and drypoint, in brownish-black ink with light tone on heavy wove paper
Dimensions: 7 3/8 x 10 1/2 in. (18.7 x 26.7 cm)



Title: The First Venice
Set: Nocturne
Date: 1880
Primary Maker: James McNeill Whistler
Medium: Etching and drypoint, in brownish-black ink on dark cream-colored paper
Dimensions: 8 x 11 5/8 in. (20.3 x 29.5 cm)



Title: The First Venice
Set: The Little Mast
Date: 1880
Primary Maker: James McNeill Whistler
Medium: Etching and drypoint, in dark brown ink with tone on cream-colored laid paper
Dimensions: 10 1/2 x 7 3/8 in. (26.7 x 18.8 cm)



Title: The First Venice
Set: Little Lagoon
Date: 1880
Primary Maker: James McNeill Whistler
Medium: Etching and drypoint in dark brown ink on dark cream-colored antique laid paper
Dimensions: 9 x 6 in. (22.8 x 15.2 cm)



Title: The First Venice
Set: The Palaces
Date: 1880
Primary Maker: James McNeill Whistler
Medium: Etching and drypoint in dark brown ink on cream-colored antique laid paper
Dimensions: 10 x 14 1/8 in. (25.4 x 35.9 cm)



Title: The First Venice
Set: The Doorways
Date: 1880
Primary Maker: James McNeill Whistler
Medium: Etching and drypoint in dark brown ink on dark cream-colored antique laid paper
Dimensions: 11 1/2 x 7 7/8 in. (29.2 x 20 cm)



Title: The First Venice
Set: The Piazzetta
Date: 1880
Primary Maker: James McNeill Whistler
Medium: Etching, printed in dark brown ink on dark cream-colored antique laid paper
Dimensions: 10 x 7 7/8 in. (25.4 x 20 cm)



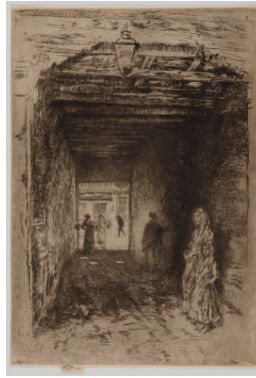
Title: The First Venice
Set: The Traghetto, No. 2
Date: 1880
Primary Maker: James McNeill Whistler
Medium: Etching and drypoint in grayish-black ink on cream-colored laid paper
Dimensions: 9 1/2 x 12 in. (24.1 x 30.5 cm)



Title: The First Venice
Set: The Riva, No. 1
Date: 1880
Primary Maker: James McNeill Whistler
Medium: Etching with drypoint in dark brown ink on cream-colored laid paper
Dimensions: 7 15/16 x 11 5/8 in. (20.2 x 29.5 cm)



Title: The First Venice Set: Two Doorways
Date: 1880
Primary Maker: James McNeill Whistler
Medium: Etching with drypoint in brownish-black ink on cream-colored antique laid paper
Dimensions: 8 x 11 1/2 in. (20.3 x 29.2 cm)



Title: The First Venice Set: The Beggars
Date: 1880
Primary Maker: James McNeill Whistler
Medium: Etching and drypoint in dark brown ink on cream-colored antique laid paper
Dimensions: 11 15/16 x 8 1/4 in. (30.3 x 21 cm)



Title: The First Venice Set: The Mast
Date: 1880
Primary Maker: James McNeill Whistler
Medium: Etching and drypoint in brownish-black ink on dark cream-colored wove paper
Dimensions: 13 1/2 x 6 in. (34.3 x 15.2 cm)



Title: Coat of Arms with a Skull
Date: ca. 1504
Primary Maker: Albrecht Dürer
Medium: Engraving, printed in black ink on cream-colored antique laid paper
Dimensions: 8 3/4 x 6 1/4 in. (22.2 x 15.9 cm)



Title: Knight, Death, and the Devil
Date: 1513
Primary Maker: Albrecht Dürer
Medium: Engraving, printed in black ink on dark cream-colored antique laid paper
Dimensions: 9 5/8 x 7 3/8 in. (24.4 x 18.7 cm)



Title: Pieter Brueghel the Younger
Date: early 17th century
Primary Maker: Anthony van Dyck
Medium: Etching, printed in black ink on cream-colored antique laid paper
Dimensions: 9 9/16 x 6 1/8 in. (24.3 x 15.6 cm)



Title: The Arch of the Pont Notre-Dame
Date: 1853
Primary Maker: Charles Meryon
Medium: Etching and drypoint, printed in black ink on pale gray-green modern laid paper
Dimensions: 5 15/16 x 7 9/16 in. (15.1 x 19.2 cm)



Title: Etchings of Paris: The Pont-au-Change
Date: 1854 (?)
Primary Maker: Charles Meryon
Medium: Etching and drypoint in brownish-black ink on pale gray-green modern laid paper
Dimensions: 6 1/8 x 13 1/8 in. (15.6 x 33.3 cm)



Title: Cottage with a White Paling
Date: 1648
Primary Maker: Rembrandt Harmensz. van Rijn
Medium: Etching, printed in black ink on dark cream-colored antique European laid paper
Dimensions: 5 1/8 x 6 1/4 in. (13 x 15.9 cm)



Title: Landscape with Haybarn and Flock of Sheep
Date: 17th century
Primary Maker: Rembrandt Harmensz. van Rijn
Medium: Etching and drypoint with sulphur tint in black ink on cream-colored laid paper
Dimensions: 3 1/4 x 6 7/8 in. (8.3 x 17.5 cm)



Title: Landscape with Three Gabled Cottages
Date: 1650
Primary Maker: Rembrandt Harmensz. van Rijn
Medium: Etching and drypoint in black ink on European cream-colored antique laid paper
Dimensions: 6 3/8 x 8 in. (16.2 x 20.3 cm)



Title: St. Francis Praying Beneath a Tree
Date: 1657
Primary Maker: Rembrandt Harmensz. van Rijn
Medium: Drypoint, etching and engraving in black ink on dark cream-colored laid paper
Dimensions: 7 1/16 x 9 5/8 in. (17.9 x 24.4 cm)



Title: Clement de Jonghe
Date: 1651
Primary Maker: Rembrandt Harmensz. van Rijn
Medium: Etching, printed in black ink on cream-colored European antique laid paper
Dimensions: 8 1/8 x 6 3/8 in. (20.6 x 16.2 cm)



Title: Jan (Johannes) Lutma the Elder (ca. 1584–1669)
Date: 1656
Primary Maker: Rembrandt Harmensz. van Rijn
Medium: State III of V. Etching and drypoint
Dimensions: 7 3/4 x 5 7/8 in. (19.7 x 14.9 cm)



Title: Portrait of a Lady
Date: 1770–1805
Primary Maker: Daniel Gardner
Medium: Gouache and pastel on paper
Dimensions: 25 x 21 1/2 in. (63.5 x 54.6 cm)



Title: Etchings of Paris: The Vampire
Date: 1853
Primary Maker: Charles Meryon
Medium: Etching and drypoint in dark brown ink on pale gray-green modern laid paper
Dimensions: 6 5/8 x 5 1/4 in. (16.8 x 13.3 cm)



Title: Etchings of Paris: The Petit-Pont
Date: 1850
Primary Maker: Charles Meryon
Medium: Etching, printed in black ink on tan simulated Asiatic paper
Dimensions: 10 3/16 x 7 1/2 in. (25.9 x 19.1 cm)



Title: Etchings of Paris: The Gallery of Notre-Dame
Date: 1853
Primary Maker: Charles Meryon
Medium: Etching and drypoint in dark brownish-black ink on pale gray-green laid paper
Dimensions: 10 13/16 x 6 13/16 in. (27.5 x 17.3 cm)



**Title: Etchings of Paris:
The Rue de Mauvais
Garçons**

Date: 1854

Primary Maker: Charles
Meryon

Medium: Etching, printed
in black ink on light brown
imitation Asiatic paper

Dimensions: 5 x 3 7/8 in.
(12.7 x 9.8 cm)



**Title: Etchings of Paris:
The Tour de l' Horloge**

Date: 1852

Primary Maker: Charles
Meryon

Medium: Etching, printed
in black ink on tan
simulated Japan paper

Dimensions: 10 3/8 x 7 5
/16 in. (26.4 x 18.6 cm)



**Title: Etchings of Paris:
Turret on the Rue de la
Tixéranderie**

Date: 1852

Primary Maker: Charles
Meryon

Medium: Etching, printed
in black ink on tan
simulated Asiatic paper

Dimensions: 9 13/16 x 5 3
/16 in. (24.9 x 13.2 cm)



**Title: Etchings of Paris:
Saint-Étienne-du-Mont**

Date: 1852

Primary Maker: Charles
Meryon

Medium: Etching, printed
in black ink on tan
simulated Asiatic paper

Dimensions: 9 7/8 x 5 1/16
in. (25.1 x 12.9 cm)



**Title: Etchings of Paris:
The Notre-Dame Pump**

Date: 1852

Primary Maker: Charles
Meryon

Medium: Etching and
drypoint, printed in black
ink on dark cream
simulated Japan paper

Dimensions: 6 11/16 x 9 7
/8 in. (17 x 25.1 cm)



**Title: Etchings of Paris:
The Pont-Neuf**

Date: 1853

Primary Maker: Charles
Meryon

Medium: Etching, printed
in brownish-black ink on
very thin, tan Japan paper

Dimensions: 7 3/16 x 7 3
/16 in. (18.3 x 18.2 cm)



**Title: Etchings of Paris:
The Morgue**

Date: 1854

Primary Maker: Charles
Meryon

Medium: Etching, printed
in black ink on cream-
colored modern laid paper

Dimensions: 9 1/8 x 8 1/8
in. (23.2 x 20.7 cm)



**Title: Etchings of Paris:
The Apse of Notre-
Dame de Paris**

Date: 1854

Primary Maker: Charles
Meryon

Medium: Etching and
drypoint, printed in black
ink on cream-colored
modern laid paper

Dimensions: 6 1/2 x 11 3/4
in. (16.5 x 29.8 cm)



**Title: Etchings of Paris:
The Rue des Toiles at
Bourges**

Date: 1853

Primary Maker: Charles
Meryon

Medium: Etching, printed
in black ink on pale gray-
green modern laid paper

Dimensions: 8 5/16 x 4 5/8
in. (21.1 x 11.7 cm)



Title: Marshal Joffre

Date: 1917

Primary Maker: Bernhardt
Wall

Medium: Etching

Dimensions: 8 7/8 x 13 1/4
in. (22.5 x 33.7 cm)



**Title: Christ Preaching
(The Hundred Guilder
Print)**

Date: ca. 1648

Primary Maker: Rembrandt
Harmensz. van Rijn

Medium: Etching, drypoint
and engraving in black ink
on cream Japanese wave
paper

Dimensions: 11 x 15 1/2 in.
(28 x 39.3 cm)



**Title: Christ Crucified
between Two Thieves
(The Three Crosses)**

Date: 1653

Primary Maker: Rembrandt
Harmensz. van Rijn

Medium: Drypoint and
engraving, printed in black
ink on cream-colored
vellum

Dimensions: 15 1/8 x 17 5/8
in. (38.4 x 44.8 cm)



**Title: Christ Presented
to the People (Ecce
Homo)**

Date: by 1655

Primary Maker: Rembrandt
Harmensz. van Rijn

Medium: Drypoint, printed
in black ink on cream-
colored Asiatic wove paper

Dimensions: 15 1/8 x 17 3/4
in. (38.4 x 45.1 cm)



**Title: Daughters of Sir
Thomas Frankland,
Bart., after John
Hoppner**

Date: 1797

Primary Maker: William
Ward

Medium: Mezzotint, printed
in black ink on dark cream-
colored wove paper

Dimensions: 22 3/4 x 17 13/16
in. (57.8 x 45.2 cm)



**Title: Studies of Men
Hanging**

Date: ca. 1435

Primary Maker: Pisanello
(Antonio di Puccio Pisano)

Medium: Pen and brown
ink, over traces of black
chalk

Dimensions: 10 5/16 x 7
in. (26.2 x 17.8 cm)
Backing Paper: 12 x 7 1/2
in. (30.5 x 19.1 cm)



Title: Landscape with a Satyr

Date: 16th century

Primary Maker: Titian
(Tiziano Vecellio)

Medium: Pen and brown ink on paper

Dimensions: 7 7/16 x 8 1/8 in. (18.9 x 20.6 cm)



Title: Mercenary Foot Soldier

Date: 1512

Primary Maker: Albrecht Altdorfer

Medium: Pen and black ink heightened with white gouache on paper prepared with brown wash

Dimensions: 5 13/16 x 4 1/16 in. (14.8 x 10.3 cm)



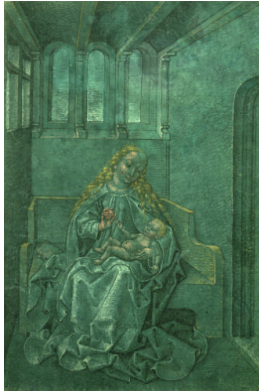
Title: A Lady on Horseback and a Foot Soldier

Date: 1522

Primary Maker: Niklaus Manuel Deutsch

Medium: Pen with black ink, white gouache, black ink border on gray-green prepared paper

Dimensions: 12 5/8 x 8 5/8 in. (32.1 x 21.9 cm)



Title: Virgin and Child

Date: late 15th century

Primary Maker: Unknown Swabian artist

Medium: Pen and black ink, white heightening, yellow, red and pink gouache on paper

Dimensions: 8 7/16 x 5 3/4 in. (21.4 x 14.6 cm)



Title: Studies of Venus (?) (recto) ; Studies for a Last Judgment (verso)

Date: ca. 1618–20

Primary Maker: Peter Paul Rubens

Medium: Pen and brown ink on paper

Dimensions: 8 x 11 1/16 in. (20.3 x 28.1 cm)



Title: The Anglers

Date: 1812–20

Primary Maker: Francisco de Goya y Lucientes

Medium: Brush and brown wash on paper

Dimensions: 7 3/4 x 5 5/16 in. (19.7 x 13.5 cm)



Title: Melencolia I

Date: 1514

Primary Maker: Albrecht Dürer

Medium: Engraving, printed in black ink on cream-colored antique laid paper

Dimensions: 9 1/2 x 7 7/16 in. (24.1 x 18.9 cm)



Title: Portrait of Snyders (Franciscus Snyders)

Date: 17th century

Primary Maker: Pieter Neefs

Medium: Etching and engraving in black ink on dark cream-colored antique laid paper

Dimensions: 9 13/16 x 6 3/16 in. (24.9 x 15.7 cm)



Title: Study for the Portrait of the Comtesse d'Haussonville

Date: 1843–44

Primary Maker: Jean-Auguste-Dominique Ingres

Medium: Graphite and black chalk on cream paper glued down to a sheet of mulberry paper

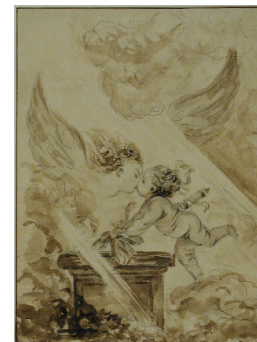
Dimensions: 14 9/16 x 7 5/16 in. (37 x 18.6 cm)
Sheet: 14 9/16 x 7 5/8 in.



Title: Portrait of Mrs. Henry Clay Frick
Date: 1959
Primary Maker: Elizabeth Shoumatoff
Medium: Pencil and watercolor on cardboard
Dimensions: 14 3/8 x 12 3/16 in. (36.5 x 31 cm)



Title: Thomas Cromwell
Date: 1709
Primary Maker: English, Eighteenth Century
Medium: Gouache and crayons? on canvas
Dimensions: 13 x 9 7/8 in. (33 x 25.1 cm)



Title: Cupid Sacrificing His Wings for the Delight of the First Kiss
Date: 18th century
Primary Maker: Jean-Honoré Fragonard
Medium: Bistre over graphite, with overdrawing in black chalk, bordered in bistre on white laid paper
Dimensions: 8 1/8 x 6 3/16 in. (20.6 x 15.7 cm)



Title: Study for Bank of the Pond after the Storm
Date: ca. 1870
Primary Maker: Jean-Baptiste-Camille Corot
Medium: Charcoal with stumping on cream colored paper
Dimensions: 16 1/8 x 23 7/16 in. (41 x 59.5 cm)



Title: Self-Portrait
Date: 17th century
Primary Maker: Anthony van Dyck
Medium: Etching, printed in black on cream-colored antique laid paper
Dimensions: 9 5/8 x 6 1/8 in. (24.4 x 15.6 cm)



Title: Count Robert de Montesquiou, after James McNeil Whistler
Date: ca. 1892
Primary Maker: Beatrice Godwin Whistler
Medium: Lithograph printed in black ink on cream-colored laid paper
Dimensions: 7 11/16 x 3 1/8 in. (19.5 x 7.9 cm)



Title: Sculpture
Date: 18th century
Primary Maker: François Boucher
Medium: Black chalk with stumping on cream laid paper
Dimensions: 10 9/16 x 12 5/8 in. (26.8 x 32.1 cm)



Title: Painting
Date: 18th century
Primary Maker: François Boucher
Medium: Black chalk on cream laid paper
Dimensions: 10 1/2 x 8 15/16 in. (26.7 x 22.7 cm)



Title: Poetry
Date: 18th century
Primary Maker: François Boucher
Medium: Black chalk on cream laid paper
Dimensions: 10 15/16 x 9 1/16 in. (27.8 x 23 cm)



Title: Sermon on the Mount
Date: 1776
Primary Maker: Richard Earlom
Medium: Mezzotint
Dimensions: 11 5/16 x 17 1/16 in. (28.7 x 43.3 cm)



Title: The White Horse
Date: 1838
Primary Maker: David Lucas
Dimensions: 15 1/2 x 13 3/4 in. (39.4 x 34.9 cm)



Title: Miss Murray
Date: 1839
Primary Maker: George H. Philips
Dimensions: 13 5/8 x 10 1/2 in. (34.6 x 26.7 cm)



Title: Selina, Lady Skipwith
Date: early 20th century
Primary Maker: C. Harbord Morant
Medium: Brown, black, grey and white gouache over pencil on cardboard
Dimensions: 9 5/8 x 7 1/4 in. (24.4 x 18.4 cm)



Title: Portrait of the Marquis de Miromesnil
Date: 1775–1800
Primary Maker: French, Last Quarter of the Eighteenth Century
Medium: Graphite on white laid paper
Dimensions: 5 1/4 x 4 3/16 in. (13.3 x 10.6 cm)



Title: Henrietta, Countess of Warwick, and Her Children
Date: 1909
Primary Maker: Joseph B. Pratt
Medium: Mezzotint
Dimensions: 20 1/2 x 16 in. (52.1 x 40.6 cm)



Title: Elizabeth Farren, Later Countess of Derby, after Sir Thomas Lawrence
Date: 1792
Primary Maker: Charles Knight
Medium: Etching and stipple engraving, printed in colors on cream antique laid paper
Dimensions: 19 11/16 x 12 1/2 in. (50 x 31.8 cm)



Title: Miss Frances Woodley, Later Mrs. Bankes, after George Romney
Date: ca. 1781
Primary Maker: James Walker
Medium: Mezzotint, printed in black ink on dark cream-colored wove paper
Dimensions: 24 1/4 x 15 in. (61.6 x 38.1 cm)



Title: Jane, Duchess of Gordon, After Sir Joshua Reynolds
Date: 1775
Primary Maker: William Dickinson
Medium: Mezzotint, printed in dark brown ink on cream-colored antique laid paper
Dimensions: 14 15/16 x 10 15/16 in. (37.9 x 27.8 cm)



Title: Crépuscule
Date: 1911
Primary Maker: Auguste Lepère
Dimensions: 8 x 11 3/8 in. (20.3 x 28.9 cm)



Title: La Route de St. Gilles
Date: late 19th century—early 20th century
Primary Maker: Auguste Lepère
Dimensions: 8 3/4 x 11 1/8 in. (22.2 x 28.3 cm)



Title: Route de la Houssaye, Crevecœur
Date: ca. 1850–1949
Primary Maker: Auguste Lepère
Dimensions: 7 x 10 1/8 in. (17.8 x 25.7 cm)



Title: Sous bois à la Rigonette
Date: late 19th century—early 20th century
Primary Maker: Auguste Lepère
Dimensions: 7 1/4 x 10 1/4 in. (18.4 x 26 cm)



Title: Lady Louisa Stormont, after George Romney
Date: 1780
Primary Maker: John Raphael Smith
Medium: Mezzotint, printed in black ink on cream-colored antique laid paper
Dimensions: 19 7/8 x 13 3/4 in. (50.5 x 34.9 cm)



Title: Lady Hamilton as "Nature," after George Romney
Date: 1784
Primary Maker: John Raphael Smith
Medium: Mezzotint, printed in black ink on cream-colored antique laid paper
Dimensions: 14 7/8 x 10 7/8 in. (37.8 x 27.6 cm)



Title: Thoughts on Matrimony
Date: 1786
Primary Maker: William Ward
Dimensions: 8 1/8 x 7 in. (20.6 x 17.8 cm)



Title: Lady Louisa Manners
Date: 18th century
Primary Maker: Valentine Green
Medium: Mezzotint, printed in black ink on cream-colored antique laid paper
Dimensions: 23 9/16 x 15 1/8 in. (59.8 x 38.4 cm)



Title: Sir Thomas More
Date: 1740
Primary Maker: Jacobus Houbraken
Dimensions: 14 3/4 x 9 1/4 in. (37.5 x 23.5 cm)



Title: Sir Thomas Cromwell
Date: 1739
Primary Maker: Jacobus Houbraken
Dimensions: 14 3/4 in. (37.5 cm)



Title: Comtesse d'Haussonville
Date: 1889
Primary Maker: Pierre Salvy Frédéric Teyssonnières
Medium: Etching
Dimensions: 15 9/16 x 10 1/4 in. (39.5 x 26 cm)



Title: View from Tivoli
Date: 1651
Primary Maker: Claude Lorrain (Claude Gellée)
Medium: Black chalk, pen, and iron-gall ink, two shades of iron-gall wash on laid paper
Dimensions: 7 7/8 x 10 1/2 in. (20 x 26.7 cm)



Title: Heroic Landscape (recto); Sketches of Cassoni, Figures, and Clouds (verso)
Date: 1655–58
Primary Maker: Claude Lorrain (Claude Gellée)
Medium: Pen, iron-gall ink, brown wash, gray wash and white heightening on laid paper
Dimensions: 11 7/8 x 15 11/16 in. (30.1 x 39.8 cm)



Title: Jacob, Rachel, and Leah at the Well
Date: 1666
Primary Maker: Claude Lorrain (Claude Gellée)
Medium: Pen with iron-gall, gray wash and black chalk on white laid paper
Dimensions: 8 7/16 x 12 7/8 in. (21.4 x 32.7 cm)
Image: 7 15/16 x 12 1/8 in. (20.2 x 30.8 cm)



Title: Lady Catherine Pelham Clinton
Date: 1782
Primary Maker: John Raphael Smith
Medium: Mezzotint, printed in black ink on cream-colored antique laid paper
Dimensions: 19 11/16 x 13 7/8 in. (50 x 35.2 cm)



Title: Lady Elizabeth Herbert and Her Son Charles, after Sir Joshua Reynolds
Date: 1779
Primary Maker: John Dean
Medium: Mezzotint, printed in black ink on dark cream-colored antique laid paper
Dimensions: 18 3/8 x 13 7/8 in. (46.7 x 35.2 cm)



Title: Caroline, Duchess of Marlborough
Date: 1791
Primary Maker: John Jones
Medium: Mezzotint, printed in black ink on cream-colored antique laid paper
Dimensions: 24 x 15 in. (61 x 38.1 cm)



Title: Mrs. Stables and Her Daughters Harriet and Maria, after George Romney
Date: 1781
Primary Maker: John Raphael Smith
Medium: Mezzotint, printed in black ink on cream-colored antique laid paper
Dimensions: 19 7/8 x 13 15/16 in. (50.5 x 35.4 cm)



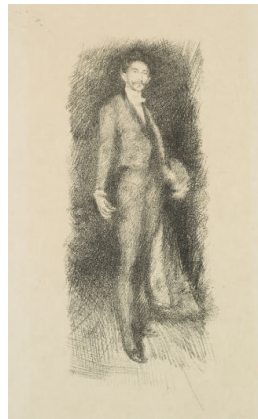
Title: Miss Greenaway, after Sir Joshua Reynolds

Date: ca. 1766–71

Primary Maker: James Watson

Medium: Mezzotint printed in black ink on cream-colored antique laid paper

Dimensions: 12 15/16 x 8 7/8 in. (32.9 x 22.6 cm)



Title: Robert, Comte de Montesquiou-Fezensac

Date: 1891–92

Primary Maker: James McNeill Whistler

Medium: Lithograph, printed in black ink on cream color wove paper

Dimensions: 8 15/16 x 3 3/4 in. (22.7 x 9.5 cm)



Title: La Serinette (Lady with a Bird-Organ)

Date: 18th century

Primary Maker: Laurent Cars

Dimensions: 19 5/16 x 14 1/2 in. (49.1 x 36.8 cm)



Title: Woman Sewing by Lamplight, after Millet

Date: 1911

Primary Maker: Timothy J. Cole

Medium: Gossamer Japan paper

Dimensions: 11 3/4 x 9 in. (29.8 x 22.9 cm)



Title: Study for Souvenir de Mortefontaine

Date: ca. 1864

Primary Maker: Jean-Baptiste-Camille Corot

Medium: Charcoal with brown chinks and stumping on paper

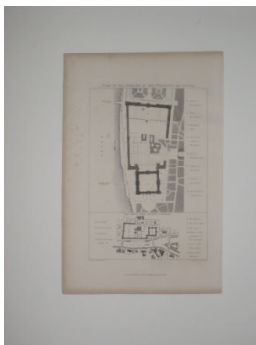
Dimensions: 9 3/16 x 12 11/16 in. (23.4 x 32.2 cm)

Title: Le Pont du Carrousel

Primary Maker: Johannes Pieter de Frey

Medium: Print

Dimensions: 10 5/8 x 14 5/8 in. (27 x 37.1 cm)



Title: Plan of the Palaces of the Tuileries and Louvre

Date: 18th century

Primary Maker: Langley Batty

Medium: Print

Dimensions: 10 11/16 x 7 1/16 in. (27.1 x 17.9 cm)



Title: Nicolas-Pierre-Baptiste Anselme, called Baptiste aîné

Date: ca. 1790

Primary Maker: Jean-Baptiste Greuze

Medium: Pastel on cream paper

Dimensions: 16 1/2 x 13 1/4 in. (41.9 x 33.7 cm)



Title: Madame Baptiste

Date: ca. 1790

Primary Maker: Jean-Baptiste Greuze

Medium: Pastel on cream paper

Dimensions: 18 x 14 5/8 in. (45.7 x 37.1 cm)



Title: Whistler's Portrait of Robert Comte de Montesquiou

Date: 1894

Primary Maker: Henri-Charles Guérard

Dimensions: 13 x 7 in. (33 x 17.8 cm)



Title: Reproduction of Whistler's portrait of Montesquiou

Date: 1894

Primary Maker: Henri-Charles Guérard

Medium: Etching on paper
Dimensions: 12 x 8 in. (30.5 x 20.3 cm)



Title: The Rehearsal (École de Ballet)

Date: ca. 1888

Primary Maker: William Thornley

Medium: Bistre ink on china paper applied to green-toned wove backing sheet

Dimensions: 8 1/16 x 10 5/16 in. (20.5 x 26.2 cm)



Title: Seated Female Nude Holding a Flower: Study for The Golden Age

Date: 1843-47

Primary Maker: Jean-Auguste-Dominique Ingres

Medium: Graphite and black chalk on tracing paper laid down to wove paper

Dimensions: 15 1/4 x 11 5/8 in. (38.7 x 29.5 cm)



Title: Portrait of Marshall Joffre

Date: early 20th century

Primary Maker: L. Boutin

Dimensions: 23 9/16 x 17 5/8 in. (59.8 x 44.8 cm)



Title: Cloud Study

Date: ca. 1822

Primary Maker: John Constable

Medium: Oil on paper, laid down on board

Dimensions: 11 1/2 x 19 in. (29.2 x 48.3 cm)



Title: Cloud Study
Date: ca. 1822
Primary Maker: John Constable
Medium: Oil on paper, laid down on board
Dimensions: 11 1/2 x 19 in. (29.2 x 48.3 cm)



Title: Plum Branches Intertwined
Date: 1802–04
Primary Maker: Pierre-Joseph Redouté
Medium: Watercolor on vellum
Dimensions: 12 9/16 x 10 3/8 in. (31.9 x 26.4 cm)



Title: Moroccan Interior
Date: 1832
Primary Maker: Eugène Delacroix
Medium: Watercolor and gouache over graphite on wove paper
Dimensions: 3 13/16 x 5 7/8 in. (9.7 x 14.9 cm)



Title: Pond at the Edge of the Woods (Etang en lisière de bois)
Date: 1853
Primary Maker: Théodore Rousseau
Medium: Pencil on paper
Dimensions: 7 1/2 x 12 13/16 in. (19.1 x 32.5 cm)



Title: Study of a Male Nude with a Sword
Date: ca. 1856–59
Primary Maker: Edgar Degas
Medium: Graphite on rose colored wove paper
Dimensions: 11 x 8 1/8 in. (27.9 x 20.6 cm)



Title: Young Man Holding a Book
Date: ca. 1758
Primary Maker: Giambattista Tiepolo
Medium: Pen, brown ink and brown wash on paper
Dimensions: 8 1/2 x 5 1/2 in. (21.6 x 14 cm)



Title: Portrait of Warren Hastings
Date: ca. 1791
Primary Maker: George Stubbs
Medium: Watercolor over graphite
Dimensions: 5 3/8 x 4 5/16 in. (13.7 x 10.9 cm)



Title: Fallen Horseman Attacked by a Monstrous Serpent (recto); Satan Looming over Job and a Seated Old Man (verso)
Date: ca. 1800
Primary Maker: Henry Fuseli
Medium: Pen and brown ink over black chalk on laid paper
Dimensions: 15 x 11 11/16 in. (38.1 x 29.7 cm)



Title: Owen Glendower
Date: ca. 1820
Primary Maker: William Blake
Medium: Graphite on laid paper
Dimensions: 9 1/8 x 7 1/8 in. (23.1 x 18 cm)



Title: Study of Two Figures (for The Burial of the Scottish Regalia)
Date: ca. 1832
Primary Maker: David Wilkie
Medium: Black, red and brown chalk with touches of blue, pink, peach and white gouache on brown wove paper
Dimensions: 14 3/8 x 18 3/8 in. (36.6 x 46.7 cm)



Title: Otterhounds
Date: 1838–44
Primary Maker: Edwin Landseer
Medium: Watercolor and gouache on wove paper with graphite framing lines
Dimensions: 11 1/2 x 17 7/8 in. (29.2 x 45.5 cm)



Title: Head of a Man (recto); Sketch for the Façade of the Palazzo Borghesi, Siena; Seated Putti (verso)
Date: ca. 1512–14
Primary Maker: Domenico Beccafumi
Medium: Recto: Red chalk on paper; Verso: Pen and brown ink and black chalk
Dimensions: 8 1/4 x 5 1/4 in. (21 x 13.3 cm)



Title: View of Dieppe Harbor
Date: 1873
Primary Maker: Antoine Vollon
Medium: Watercolor and graphite on laid paper
Dimensions: 11 x 18 1/8 in. (27.9 x 46 cm)



Title: Portrait of a Woman
Date: ca. 1730
Primary Maker: Rosalba Carriera
Medium: Pastel on paper, laid down on canvas
Dimensions: 23 1/4 x 18 7/8 in. (59.1 x 47.8 cm)



Title: Portrait of a Man in Pilgrim's Costume
Date: ca. 1730
Primary Maker: Rosalba Carriera
Medium: Pastel on paper, laid down on canvas
Dimensions: 23 1/4 x 18 15/16 in. (59.1 x 48.1 cm)